



Western Michigan University
ScholarWorks at WMU

Legacy Scout Tickets from Pure Oil Company

8-20-2021

MGRRE_PureOilScoutTickets_Ford Motor Company_48_unk

MGRRE

Western Michigan University

Follow this and additional works at: <https://scholarworks.wmich.edu/pure>



Part of the Geology Commons

WMU ScholarWorks Citation

MGRRE, "MGRRE_PureOilScoutTickets_Ford Motor Company_48_unk" (2021). *Legacy Scout Tickets from Pure Oil Company*. 10744.

<https://scholarworks.wmich.edu/pure/10744>

This Document is brought to you for free and open access via ScholarWorks at WMU. It has been accepted for inclusion in Legacy Scout Tickets from Pure Oil Company by an authorized administrator of ScholarWorks at WMU. See the National Digital Catalogue - Science Base Catalogue for more collections submitted by MGRRE.



MGRRE_PureOilScoutTickets_Ford Motor Company_48_unk

API unk

Permit Number unk

Lease Name Ford Motor Company

Well Number 48

County Wayne

Township 01S

Range 11E

Section 24

2021 DEQ or Pure co_name Ford Motor Company

Pure Number 5

Latitude 42.39669

Longitude -83.09124

Feb-1-34

THE PURE OIL COMPANY

LOCATION REPORT

No.

DATE 2/1/34

STATE Michigan COUNTY Wayne DIST. Greenfield TWP. Greenfield SEC. 24 TOWN 1 S RANGE 11 E
 WELL No. 48 (SERIAL No. 5) FARM Ford Motor Company ACRES

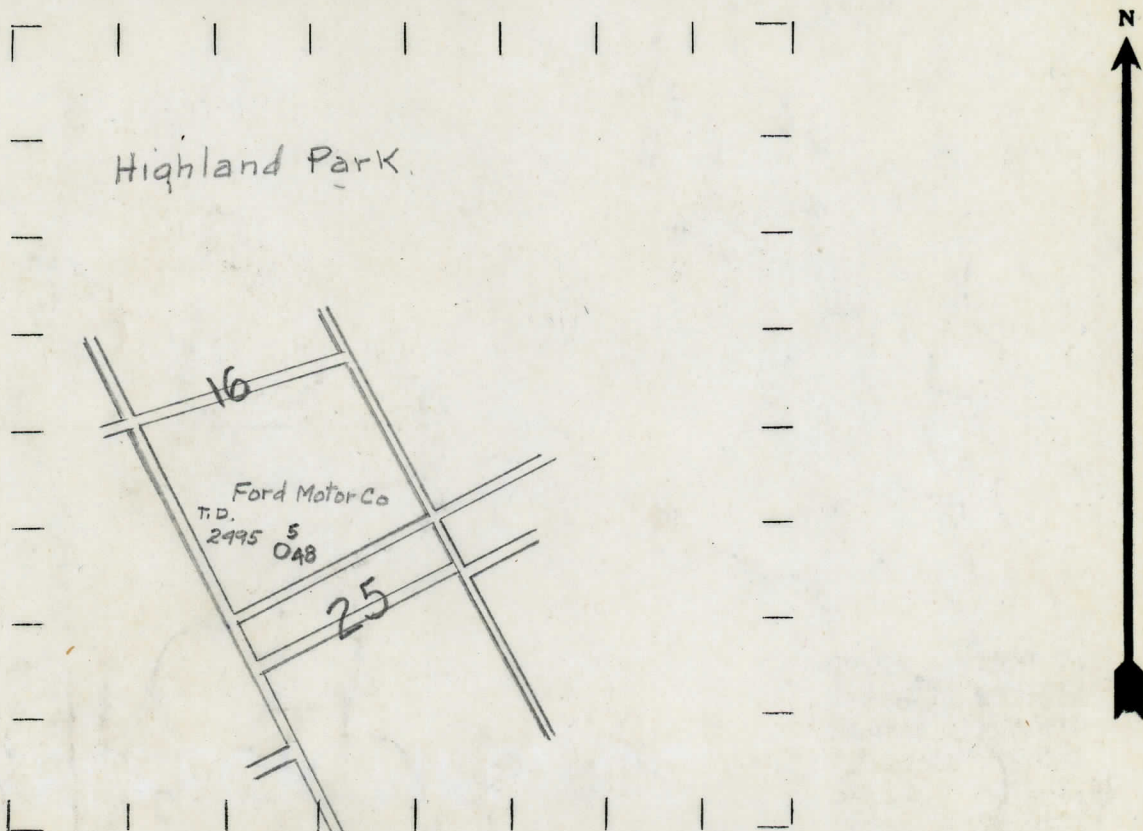
NAME OF STREAM OR WATERS _____ QUADRANGLE _____
 OPERATOR Ford Motor Company MAP Greenfield Twp - Wayne Co.
Greenfield Township, Wayne County

Feet from North Line of Farm
 " " East " " "
 " " South " " "
 " " West " " "
 Feet from North Line of Section
 " " East " " "
 " " South " " "
 " " West " " "

LEGEND

- LOCATION
- ⊕ RIG
- ⊕ DRILLING
- ⊗ GAS WELL
- OIL WELL
- ⊕ SMALL OIL WELL
- ⊗ DRY HOLE
- ⊕ DRY SHOWING OIL
- ⊗ DRY SHOWING GAS
- ⊗ ABANDONED LOCATION
- ⊗ ABANDONED GAS WELL
- ⊗ ABANDONED OIL WELL

NOTE: Below make tracing from map, (when no map is obtainable make sketch) showing farm, center of section, this location with measurements and also wells, dry holes, or other locations in the vicinity of this location. Make copy to keep for reference and send original to Columbus office.



Location data from Geol. records.

REMARKS: Location information from Geological records T. D. 2495' T.D. 2495'

SIGNED

R. A. Ysagosa
 Superintendent or Foreman.

DIVISION 5/1/34

LOCATION REPORT

No. 5

DATE 1/2/34

LOCATION REPORT

No. 5

STATE Michigan COUNTY Wayne DIST. Greenfield SEC. 24 TOWN 1-S RANGE 11-E

WELL No. 48 (SERIAL No. 5) FARM City of Detroit ACRES

NAME OF STREAM OR WATERS QUADRANGLE C-SW 1/4

OPERATOR Ford Motor Company MAP Greenfield Township, Wayne County

Feet from North Line of Farm

East

South

West

Feet from North Line of Section

East

South

West

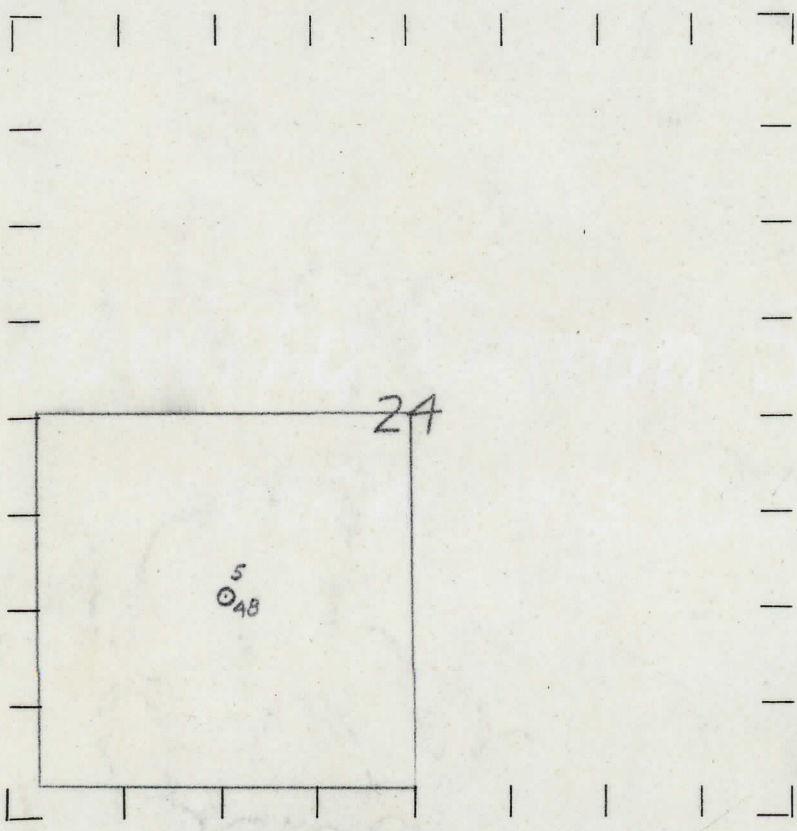
1320

1320

LEGEND

- O LOCATION
DRY HOLE
RIG
DRY SHOWING OIL
DRILLING
DRY SHOWING GAS
GAS WELL
ABANDONED LOCATION
OIL WELL
ABANDONED GAS WELL
SMALL OIL WELL
ABANDONED OIL WELL

NOTE: Below make tracing from map, (when no map is obtainable make sketch) showing farm, center of section, this location with measurements and also wells, dry holes, or other locations in the vicinity of this location. Make copy to keep for reference and send original to Columbus office.



Drift 220' ?
Trav. (?) 200-310
Dundee 350-490
Sylvania 785-860
Salina 1053-2135
Total Depth 2495'

REMARKS: Completed - 1913

Pub. #24 - pp. 249

SIGNED

R. L. Yeager
Superintendent or Foreman.