



Western Michigan University  
ScholarWorks at WMU

---

Legacy Scout Tickets from Pure Oil Company

---

8-20-2021

## MGRRE\_PureOilScoutTickets\_Redford Golf Club\_2\_unk

MGRRE

*Western Michigan University*

Follow this and additional works at: <https://scholarworks.wmich.edu/pure>



Part of the Geology Commons

---

### WMU ScholarWorks Citation

MGRRE, "MGRRE\_PureOilScoutTickets\_Redford Golf Club\_2\_unk" (2021). *Legacy Scout Tickets from Pure Oil Company*. 10747.

<https://scholarworks.wmich.edu/pure/10747>

This Document is brought to you for free and open access via ScholarWorks at WMU. It has been accepted for inclusion in Legacy Scout Tickets from Pure Oil Company by an authorized administrator of ScholarWorks at WMU. See the National Digital Catalogue - Science Base Catalogue for more collections submitted by MGRRE.



---

**MGRRE\_PureOilScoutTickets\_Redford Golf Club\_2\_unk**

API unk

Permit Number unk

Lease Name Redford Golf Club

Well Number 2

County Wayne

Township 01S

Range 10E

Section 9

2021 DEQ or Pure co\_name Redford Municipal Water

Pure Number 12

Latitude 42.4218962

Longitude -83.2677226

Feb 1 - 34

THE PURE OIL COMPANY

LOCATION REPORT

No. 12

DATE 2/1/34

STATE Michigan COUNTY Wayne DIST. Bedford TWP. Bedford SEC. 9 TOWN 1 S RANGE 10 E

WELL No. 22 (SERIAL No. 12) FARM Redford Golf Club

NAME OF STREAM OR WATERS Redford Municipal Well QUADRANGLE NW-NW-NE

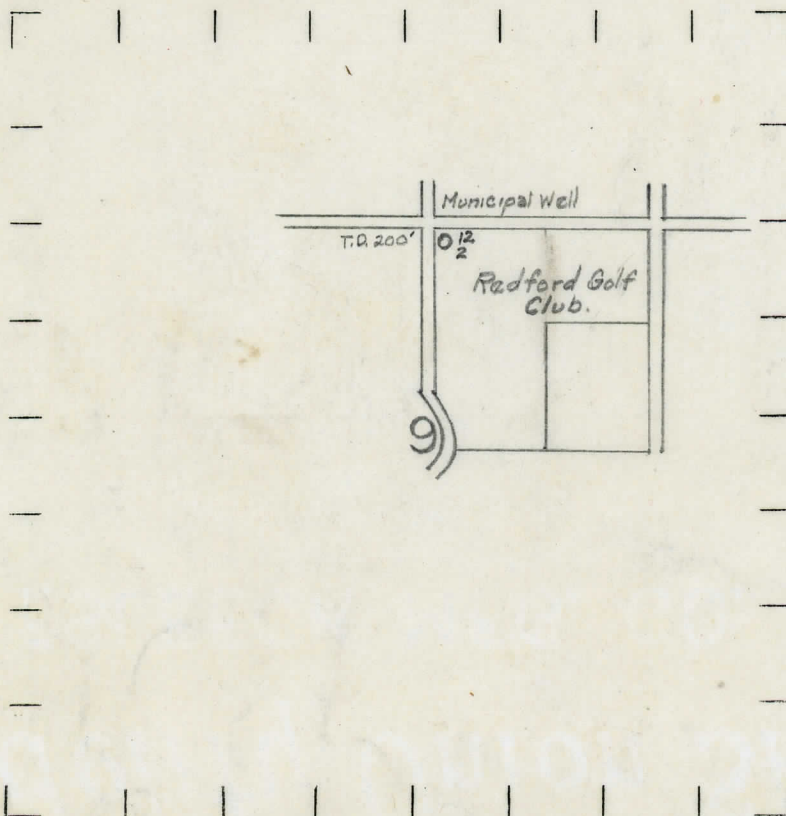
OPERATOR Redford Municipal Well MAP Bedford Township, Wayne County

Feet from North Line of Farm
East
South
West
Feet from North Line of Section
East
South
West

LEGEND

- LOCATION
RIG
DRILLING
GAS WELL
OIL WELL
SMALL OIL WELL
DRY HOLE
DRY SHOWING OIL
DRY SHOWING GAS
ABANDONED LOCATION
ABANDONED GAS WELL
ABANDONED OIL WELL

NOTE: Below make tracing from map, (when no map is obtainable make sketch) showing farm, center of section, this location with measurements and also wells, dry holes, or other locations in the vicinity of this location. Make copy to keep for reference and send original to Columbus office.



REMARKS: Location data from Geological Records. T.D. 200'

Location Data from Geological records T. D. 200'

SIGNED

R. A. Yeager
Superintendent or Foreman.



DATE January 2, 1934

LOCATION REPORT

No. 12

STATE Michigan COUNTY Wayne DIST. Bedford SEC. 9 TOWN 1 S RANGE 10 E

WELL No. 2 (SERIAL No. 12) FARM Redford Municipal Water ACRES

NAME OF STREAM OR WATERS QUADRANGLE C.N. Line

OPERATOR Redford Municipal Water MAP Bedford Township, Wayne County

Feet from North Line of Farm

“ “ East “ “ “

“ “ South “ “ “

“ “ West “ “ “

300 Feet from North Line of Section

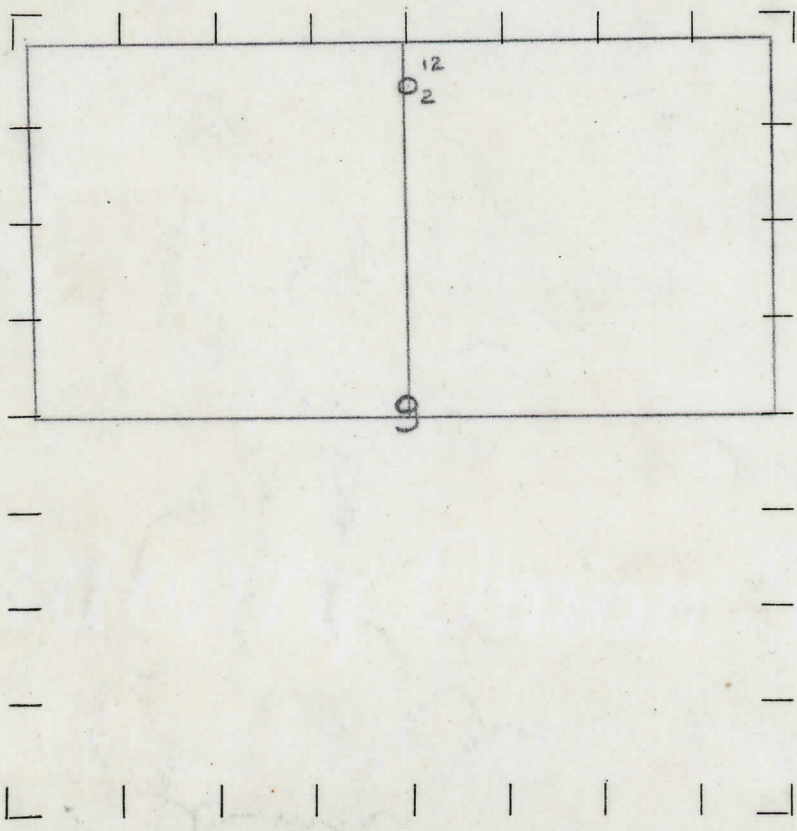
2600 “ “ East “ “ “

“ “ South “ “ “

“ “ West “ “ “

- LEGEND**
- LOCATION
  - ⊙ RIG
  - ⊕ DRILLING
  - ⊗ GAS WELL
  - OIL WELL
  - ⦿ SMALL OIL WELL
  - ⊛ DRY HOLE
  - ⊠ DRY SHOWING OIL
  - ⊞ DRY SHOWING GAS
  - ⊙ ABANDONED LOCATION
  - ⊗ ABANDONED GAS WELL
  - ⦿ ABANDONED OIL WELL

NOTE: Below make tracing from map, (when no map is obtainable make sketch) showing farm, center of section, this location with measurements and also wells, dry holes, or other locations in the vicinity of this location. Make copy to keep for reference and send original to Columbus office.



REMARKS:

Drilled 1915 by Caster Bros. Drillers Total Depth 200' stopped in Antrim Shale

SIGNED

*R. L. Veasey*

Superintendent or Foreman.