



Western Michigan University
ScholarWorks at WMU

Legacy Scout Tickets from Pure Oil Company

8-20-2021

MGRRE_PureOilScoutTickets_Parsons & Drake Realty Co._1_21163018260000

MGRRE
Western Michigan University

Follow this and additional works at: <https://scholarworks.wmich.edu/pure>



Part of the Geology Commons

WMU ScholarWorks Citation

MGRRE, "MGRRE_PureOilScoutTickets_Parsons & Drake Realty Co._1_21163018260000" (2021). *Legacy Scout Tickets from Pure Oil Company*. 10752.
<https://scholarworks.wmich.edu/pure/10752>

This Document is brought to you for free and open access via ScholarWorks at WMU. It has been accepted for inclusion in Legacy Scout Tickets from Pure Oil Company by an authorized administrator of ScholarWorks at WMU. See the National Digital Catalogue - Science Base Catalogue for more collections submitted by MGRRE.



MGRRE_PureOilScoutTickets_Parsons & Drake Realty Co._1_21163018260000

API 21163018260000

Permit Number 1826

Lease Name Parsons & Drake Realty Co.

Well Number 1

County Wayne

Township 03S

Range 10E

Section 36

2021 DEQ or Pure co_name Parsons and Drake, Realty Company

Pure Number 21

Latitude 42.1854

Longitude -83.19339

THE PURE OIL COMPANY

DATE February 2, 1934CORRECTED

LOCATION REPORT

CORRECTEDNo. 21STATE Michigan COUNTY Wayne DIST. Ecorse TWP. Ecorse SEC. 36 TOWN 3 S RANGE 10 EWELL No. 1 (SERIAL No. 21) FARM Parsons & Drake Realty Corporation ACRESNAME OF STREAM OR WATERS QUADRANGLE SW-SE-SEOPERATOR Parsons & Drake MAP Ecorse Township, Wayne County

Feet from North Line of Farm

231234

Feet from North Line of Section

1086231LEGEND

○ LOCATION

① RIG

⊗ DRILLING

⊗ GAS WELL

● OIL WELL

⬤ SMALL OIL WELL

⬤ DRY HOLE

⬤ DRY SHOWING OIL

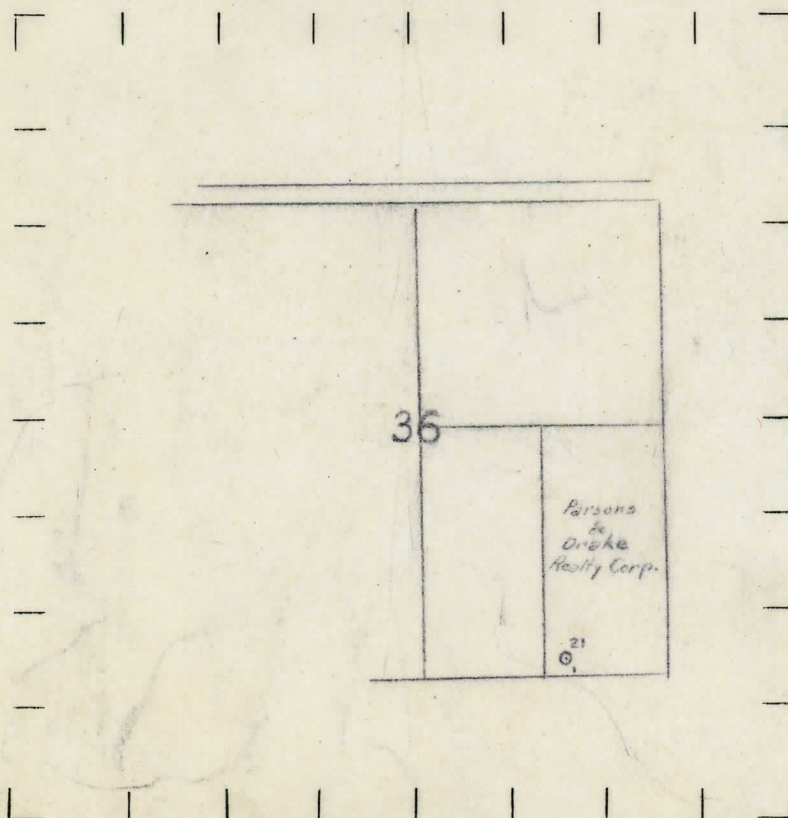
⬤ DRY SHOWING GAS

⬤ ABANDONED LOCATION

⬤ ABANDONED GAS WELL

⬤ ABANDONED OIL WELL

NOTE: Below make tracing from map, (when no map is obtainable make sketch) showing farm, center of section, this location with measurements and also wells, dry holes, or other locations in the vicinity of this location. Make copy to keep for reference and send original to Columbus office.



REMARKS:

Formerly carried as Marion McCurdy, Operator.

SIGNED

R. L. Yeager
Superintendent or Foreman.

DATE DEC. 5, 1933 LOCATION REPORT NO. 21

STATE Michigan COUNTY Wayne DIST. Egolese SEC. 36 TOWN 3 S RANGE 10 E

WELL No. 1 (SERIAL No. 21) FARM Parsons & Drake Realty Corp. ACRES

NAME OF STREAM OR WATERS QUADRANGLE SW SE SE

OPERATOR Marion McCurdy MAP Egolese Township, Wayne County

Parsons & Drake
 Feet from North Line of Farm

" " East " " "

231 " " South " " "

234 " " West " " "

Feet from North Line of Section

1086 " " East " " "

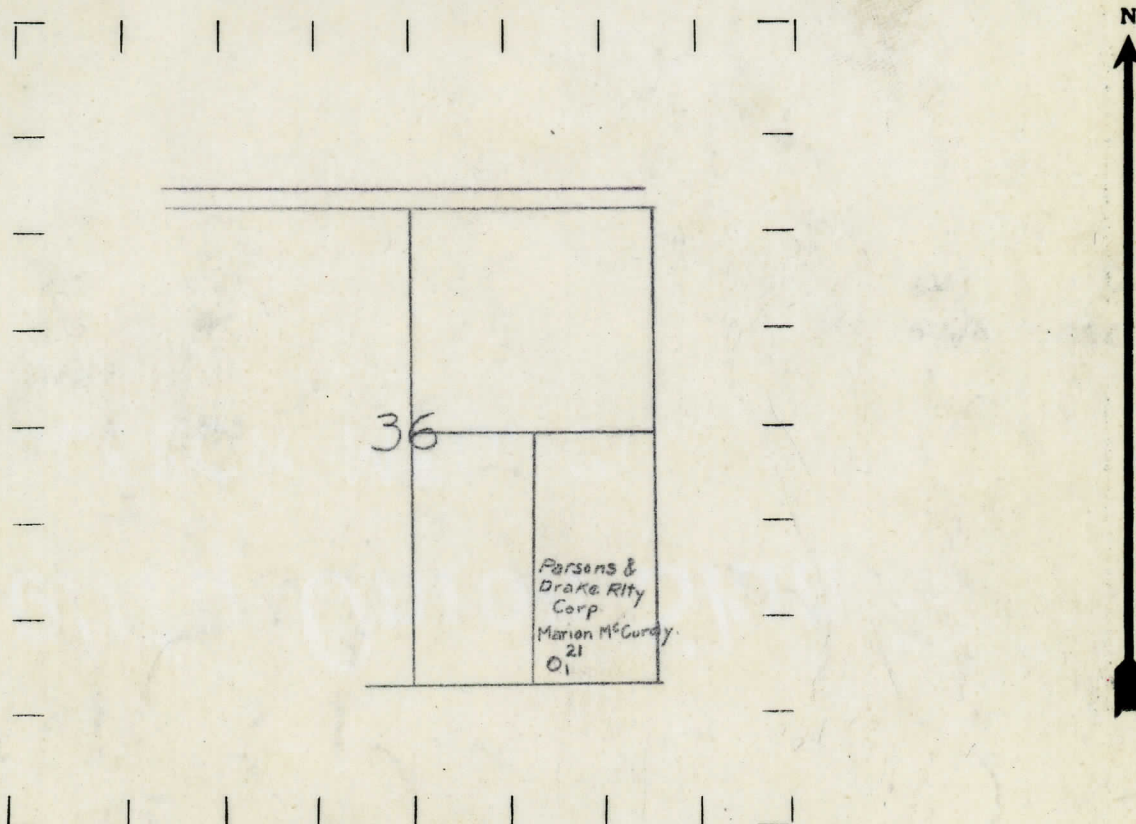
231 " " South " " "

" " West " " "

LEGEND

- | | |
|------------------|----------------------|
| ○ LOCATION | ✦ DRY HOLE |
| ① RIG | ✦ DRY SHOWING OIL |
| ⊕ DRILLING | ✦ DRY SHOWING GAS |
| ⊗ GAS WELL | ✦ ABANDONED LOCATION |
| ● OIL WELL | ✦ ABANDONED GAS WELL |
| ⬤ SMALL OIL WELL | ✦ ABANDONED OIL WELL |

NOTE: Below make tracing from map, (when no map is obtainable make sketch) showing farm, center of section, this location with measurements and also wells, dry holes, or other locations in the vicinity of this location. Make copy to keep for reference and send original to Columbus office.



REMARKS:

SIGNED

R. L. Yeager
 Superintendent or Foreman.

Michigan Producing Division

Date 9/5/35 No. 21
State Michigan County Wayne Dist. 100
Twp. Ecorse Sec. 36 Twp. 38 Rge. 11E
(Serial No.)
Well No. 1 (County No.) 21 Farm Parsons & Drake Realty Corp. Acres
Operator Drake & Parsons by Scouting Dept.
Information secured from
Date well started 12/7/33 Date well completed 8/30/35 Elevation 595.5'

PRODUCTION RECORD

1st 24 hours natural **Dry Hole**

2nd 24 hours natural

Date of shot No. of quarts From to From to

Date of acid No. of gallons

1st 24 hours after acid shot

2nd 24 hours after acid shot

FORMATION AND CASING RECORD

[illegible]

Remarks Show Gas 940'

Signed L. H. Bell