



Western Michigan University  
ScholarWorks at WMU

---

Legacy Scout Tickets from Pure Oil Company

---

8-20-2021

MGRRE\_PureOilScoutTickets\_Fogarty, John\_1\_21163025630000

MGRRE

*Western Michigan University*

Follow this and additional works at: <https://scholarworks.wmich.edu/pure>



Part of the Geology Commons

---

#### WMU ScholarWorks Citation

MGRRE, "MGRRE\_PureOilScoutTickets\_Fogarty, John\_1\_21163025630000" (2021). *Legacy Scout Tickets from Pure Oil Company*. 10755.

<https://scholarworks.wmich.edu/pure/10755>

This Document is brought to you for free and open access via ScholarWorks at WMU. It has been accepted for inclusion in Legacy Scout Tickets from Pure Oil Company by an authorized administrator of ScholarWorks at WMU. See the National Digital Catalogue - Science Base Catalogue for more collections submitted by MGRRE.



---

**MGRRE\_PureOilScoutTickets\_Fogarty, John\_1\_21163025630000**

API 21163025630000

Permit Number 2563

Lease Name Fogarty, John

Well Number 1

County Wayne

Township 02S

Range 08E

Section 12

2021 DEQ or Pure co\_name Michigan Montana Oil Company

Pure Number 24

Latitude 42.33172

Longitude -83.43287

DATE June 13, 1935

LOCATION REPORT

No. 24

STATE Michigan COUNTY Wayne DIST. Canton TWP. Canton SEC. 12 TOWN 25S RANGE 8E

WELL No. 1 (SERIAL No. 24) FARM John Fogarty ACRES SW-SE-NE

NAME OF STREAM OR WATERS \_\_\_\_\_ QUADRANGLE SW-SE-NE

OPERATOR Michigan-Montana Oil Company Map Canton Township, Wayne County  
Mich. Montana Oil Co. Canton-Wayne

2235 2235 Feet from North Line of Farm

990 990 " " East " " "

" " South " " "

" " West " " "

Feet from North Line of Section

990 990 " " East " " "

405 405 " " South " 1/4 "

" " West " " "

LEGEND

○ LOCATION

⊙ RIG

⊕ DRILLING

☼ GAS WELL

● OIL WELL

⦿ SMALL OIL WELL

⊙ DRY HOLE

⦿ DRY SHOWING OIL

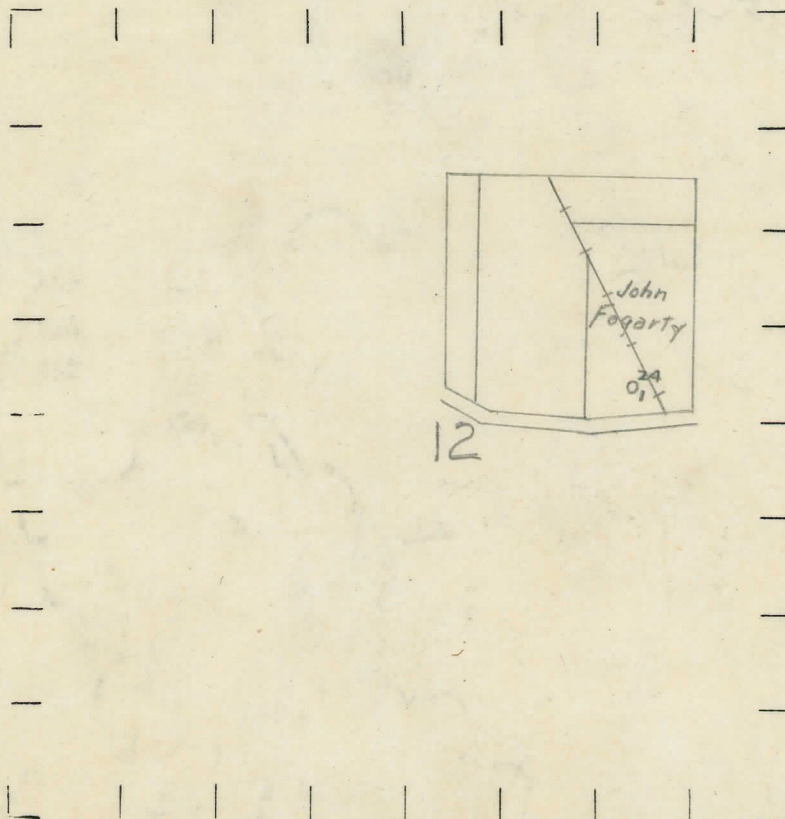
⦿ DRY SHOWING GAS

⦿ ABANDONED LOCATION

☼ ABANDONED GAS WELL

⦿ ABANDONED OIL WELL

NOTE: Below make tracing from map, (when no map is obtainable make sketch) showing farm, center of section, this location with measurements and also wells, dry holes, or other locations in the vicinity of this location.



REMARKS:

SIGNED

R. L. Yeager  
Superintendent or Foreman.

54

Signed B. V. Bell  
2