



Western Michigan University
ScholarWorks at WMU

Legacy Scout Tickets from Pure Oil Company

8-20-2021

MGRRE_PureOilScoutTickets_Hope, J._1_21163027880000

MGRRE

Western Michigan University

Follow this and additional works at: <https://scholarworks.wmich.edu/pure>



Part of the Geology Commons

WMU ScholarWorks Citation

MGRRE, "MGRRE_PureOilScoutTickets_Hope, J._1_21163027880000" (2021). *Legacy Scout Tickets from Pure Oil Company*. 10758.

<https://scholarworks.wmich.edu/pure/10758>

This Document is brought to you for free and open access via ScholarWorks at WMU. It has been accepted for inclusion in Legacy Scout Tickets from Pure Oil Company by an authorized administrator of ScholarWorks at WMU. See the National Digital Catalogue - Science Base Catalogue for more collections submitted by MGRRE.



MGRRE_PureOilScoutTickets_Hope, J._1_21163027880000

API 21163027880000

Permit Number 2788

Lease Name Hope, J.

Well Number 1

County Wayne

Township 02S

Range 09E

Section 1

2021 DEQ or Pure co_name Prednergast, Thomas A.

Pure Number 27

Latitude 42.34608

Longitude -83.32349

The Pure Oil Company
THE PURE OIL COMPANY

DATE October 3, 1935

LOCATION REPORT

No. 27

STATE Michigan COUNTY Wayne DIST. Nankin SEC. 1 TOWN 2S RANGE 9E
WELL No. 1 (SERIAL No. 27) FARM James Hope PREC. James Hope ACRES

NAME OF STREAM OR WATERS _____ QUADRANGLE NE-NE-SW
NE-NE-SWOPERATOR Thomas A. Pendergast Map Nankin Township, Wayne County
Thomas A. Pendergast Nankin Twp - Wayne Co.500 500 Feet from North Line of Farm400 400 " " East " " "

" " South " " "

" " West " " "

500 500 Feet from North Line of Section400 400 " " East " " 1/4

" " South " " "

" " West " " "

LEGEND

○ LOCATION

⊙ RIG

⊕ DRILLING

☼ GAS WELL

● OIL WELL

● SMALL OIL WELL

⊙ DRY HOLE

● DRY SHOWING OIL

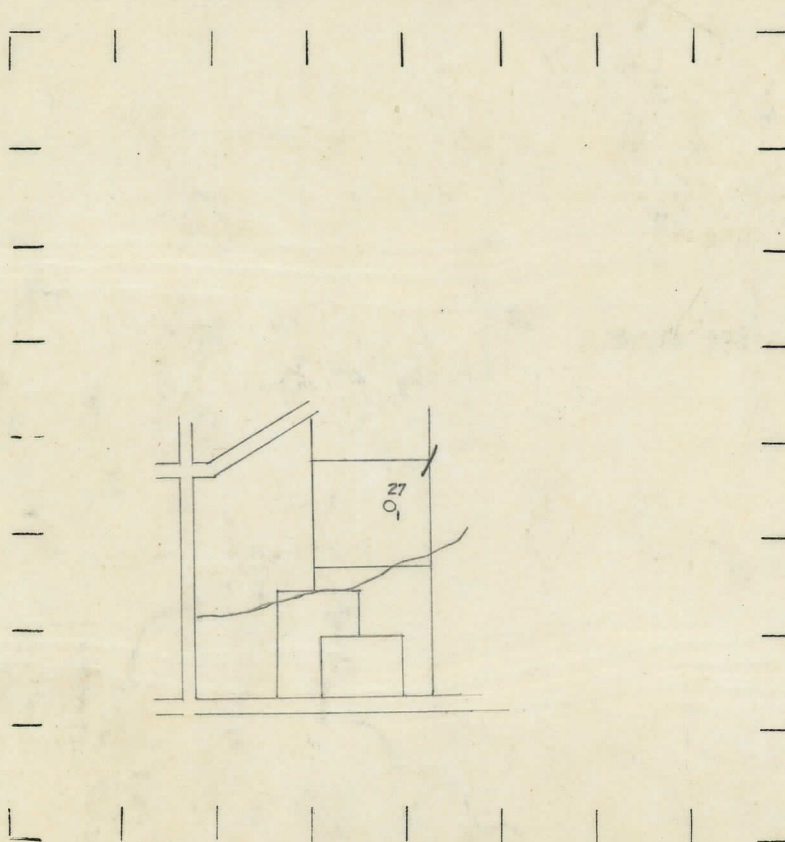
⊙ DRY SHOWING GAS

⊙ ABANDONED LOCATION

☼ ABANDONED GAS WELL

● ABANDONED OIL WELL

NOTE: Below make tracing from map, (when no map is obtainable make sketch) showing farm, center of section, this location with measurements and also wells, dry holes, or other locations in the vicinity of this location.



REMARKS:

SIGNED

Superintendent or Foreman.

Signed

Wm Bell