



Western Michigan University
ScholarWorks at WMU

Legacy Scout Tickets from Pure Oil Company

8-20-2021

MGRRE_PureOilScoutTickets_Angell, Glen_1_21163125890000

MGRRE

Western Michigan University

Follow this and additional works at: <https://scholarworks.wmich.edu/pure>



Part of the Geology Commons

WMU ScholarWorks Citation

MGRRE, "MGRRE_PureOilScoutTickets_Angell, Glen_1_21163125890000" (2021). *Legacy Scout Tickets from Pure Oil Company*. 10773.

<https://scholarworks.wmich.edu/pure/10773>

This Document is brought to you for free and open access via ScholarWorks at WMU. It has been accepted for inclusion in Legacy Scout Tickets from Pure Oil Company by an authorized administrator of ScholarWorks at WMU. See the National Digital Catalogue - Science Base Catalogue for more collections submitted by MGRRE.



MGRRE_PureOilScoutTickets_Angell, Glen_1_21163125890000

API 21163125890000

Permit Number 12589

Lease Name Angell, Glen

Well Number 1

County Wayne

Township 01S

Range 08E

Section 7

2021 DEQ or Pure co_name Union Drilling and Producing Company

Pure Number 44

Latitude 42.41892

Longitude -83.54271

WELL REPORT - OUTSIDE OPERATIONS

SERIAL NO. 44*

STATE Michigan ~~MSK~~ CO. Wayne

OPERATOR W.C. Taggart

FARM M. Angell Schneider, et al WELL NO. X 2

TWP. ~~SWVEX~~ Northville S. 7 T. 1S R. 8E

LOC. SE NE NW - 1000' from north and 500' from east line of quarter section.

WILDCAT FIELD FIELD NAME Northville - Trenton

MAP NO. _____ CO-ORD. _____ ELEV. _____

STATUS Started 1-26-54 Ø4298

This well was previously drilled by Union Drilling & Producing Co. under permit no. 12589

NORTH

		44*					
			Ø				
		2	4288'				
				7			

DATE 2-1-54 SCOUT JEC

THE PURE OIL COMPANY
LOCATION REPORT

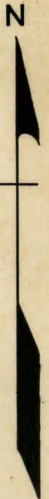
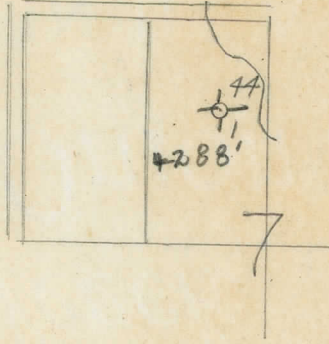
Date September 11, 1946 A.F.E. No. Glen Angell
 Division Mich. Producing District _____ Lease Glen Angell
 Acres _____ Lease No. _____ Elevation _____ Well No. 1 (Serial No. 44)
 Quadrangle SE-NE-NW SE NE NW Sec. 7 Twp. 1 S Rge. 8 E ~~BE~~ ~~BE~~ ~~BE~~ Northville
 Survey _____ County Wayne State Michigan
 Operator Union Drilg. & Prod. Co. Map Northville Township, Wayne County
Union Drilling & Producing Co.

1000	1000	Feet from North Line of Lease
500	500	" " East " " "
		" " South " " "
		" " West " " "
1000	1000	Feet from North <u>1/4</u> of Section
500	500	" " East " " "
		" " South " " "
		" " West " " "

LEGEND

- Location
- ☀ Gas Well
- Oil Well
- ☀ Gas - Distillate Well
- ∅ or ○ Dry Hole
- Dry Showing Oil
- ☀ Dry Showing Gas
- ⊗ Abandoned Location
- ☀ or ☀ Abandoned Gas Well
- or ● Abandoned Oil Well
- or ○ Input Well

misc



Remarks: _____ Scale _____

Submitted by CB Civil Engineer Approved by _____ Division Manager

Approved by _____ Vice-President - General Manager