



Western Michigan University
ScholarWorks at WMU

Legacy Scout Tickets from Pure Oil Company

9-8-2021

MGRRE_PureOilScoutTickets_Schultz_1_21127007910000

MGRRE

Western Michigan University

Follow this and additional works at: <https://scholarworks.wmich.edu/pure>



Part of the Geology Commons

WMU ScholarWorks Citation

MGRRE, "MGRRE_PureOilScoutTickets_Schultz_1_21127007910000" (2021). *Legacy Scout Tickets from Pure Oil Company*. 10816.

<https://scholarworks.wmich.edu/pure/10816>

This Document is brought to you for free and open access via ScholarWorks at WMU. It has been accepted for inclusion in Legacy Scout Tickets from Pure Oil Company by an authorized administrator of ScholarWorks at WMU. See the National Digital Catalogue - Science Base Catalogue for more collections submitted by MGRRE.



MGRRE_PureOilScoutTickets_Schultz_1_21127007910000

API 21127007910000

Permit Number 791

Lease Name Schultz

Well Number 1

County Oceana

Township 15N

Range 18W

Section 12

2021 DEQ or Pure co_name Dulall, Edward

Pure Number 17

Latitude 43.71763

Longitude -86.41071

DATE Oct. 11, 1929

LOCATION REPORT

No. 17

STATE Michigan COUNTY Oceana DIST. TWP. Golden SEC. 12 TOWN 15N RANGE 18W

WELL No. 1 (SERIAL No. 17) FARM W. J. Schultz ACRES

NAME OF STREAM OR WATERS QUADRANGLE NW - NW

OPERATOR Edward DuVall etal MAP Golden Twp., Oceana County

200 Feet from North Line of Farm

----- " " East " " "

----- " " South " " "

820 " " West " " "

200 Feet from North Line of Section

----- " " East " " "

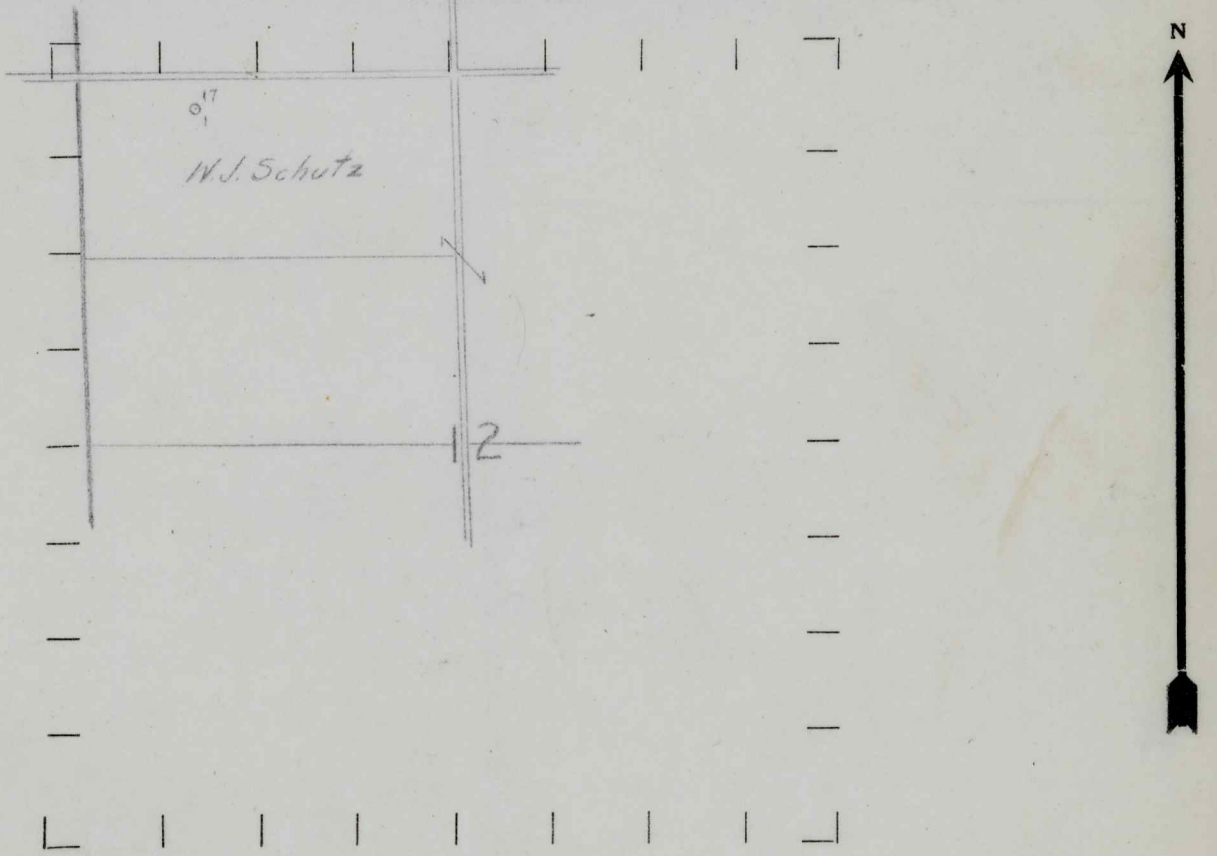
----- " " South " " "

820 " " West " " "

LEGEND

- LOCATION
- ⊙ RIG
- ⊕ DRILLING
- ⊛ GAS WELL
- OIL WELL
- ⊖ SMALL OIL WELL
- ⊛ DRY HOLE
- ⊖ DRY SHOWING OIL
- ⊛ DRY SHOWING GAS
- ⊖ ABANDONED LOCATION
- ⊛ ABANDONED GAS WELL
- ⊖ ABANDONED OIL WELL

NOTE: Below make tracing from map, (when no map is obtainable make sketch) showing farm, center of section, this location with measurements and also wells, dry holes, or other locations in the vicinity of this location. Make copy to keep for reference and send original to Columbus office.



REMARKS:

SIGNED

Superintendent or Foreman.

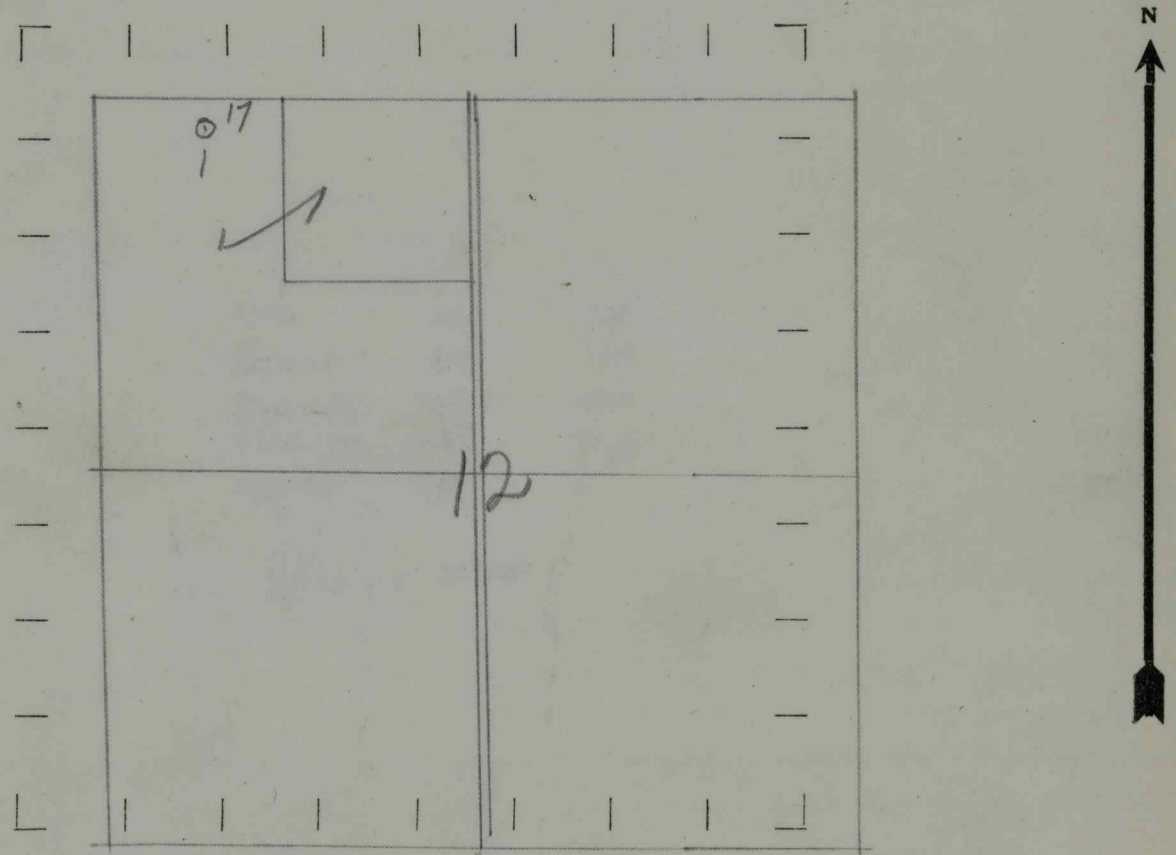
*Map
Twp
10/15*

STATE Michigan COUNTY Oceana DIST. Golden TWP. Golden SEC. 12 TOWN 15N RANGE 18W
 WELL No. 1 (SERIAL No. 17) FARM W. J. Schultz ACRES
 NAME OF STREAM OR WATERS QUADRANGLE NW-NW
 OPERATOR Edward Duvall et al MAP Golden Twp - 1" = 1320'

200 Feet from North Line of Farm
 500 " " East " " "
 " " South " " "
 " " West " " "
 Feet from North Line of Section
 " " East " " "
 " " South " " "
 " " West " " "

- LEGEND**
- LOCATION
 - ⊕ RIG
 - ⊕ DRILLING
 - ⊕ GAS WELL
 - OIL WELL
 - ⊕ SMALL OIL WELL
 - ◇ DRY HOLE
 - ◆ DRY SHOWING OIL
 - ⊕ DRY SHOWING GAS
 - ⊕ ABANDONED LOCATION
 - ⊕ ABANDONED GAS WELL
 - ⊕ ABANDONED OIL WELL

NOTE: Below make tracing from map, (when no map is obtainable make sketch) showing farm, center of section, this location with measurements and also wells, dry holes, or other locations in the vicinity of this location. Make copy to keep for reference and send original to Columbus office.



REMARKS:

SIGNED GABell
 Superintendent or Foreman.

Michigan Producing DIVISION

COMPLETION RECORD

No. -17-

DATE May 24th, 1930

STATE Michigan COUNTY Oceana DIST. TWP. Golden SEC. 12 TOWN 15 N RANGE 18 W
 PREC.

WELL No. 1 (SERIAL No. 17) FARM W.J. Schulz ACRES _____

NAME OF STREAM OR WATERS _____ QUADRANGLE _____

OPERATOR Ed. Duvall, etal MAP Golden Twp., Oceana County.

LOCATION REPORT SENT IN (DATE) October 11th, 1929.

WELL STARTED (DATE) October 1929. WELL COMPLETED (DATE) May 17th, 1930.

~~CHICKEN~~ ~~CASING~~ DRY HOLE ~~ABANDONED WELL~~

CROSS OUT THREE OF THE ABOVE
 WELL RECORD

DATE OF SHOT	NUMBER OF QUARTS	BARRELS OR FEET
1st 24 HOURS PRODUCTION <u>dry</u>		
2nd " " "		" " "
3rd " " "		" " "
4th " " "		" " "
5th " " "		" " "

SAND AND CASING

CASING SIZE	WEIGHT	CASING Feet Inches	SAND Name and Nature	TOP	BOTTOM	TOP PAY	BOTTOM PAY	SALT WATER
			Drift	0	347			
			Redrock	830	851			
			Br. shale	1460	1630			
			Traverse	1650	2114			1685
			Dundee	2145				2023
			T.D.	2310'				

REMARKS _____

