



Western Michigan University
ScholarWorks at WMU

Legacy Scout Tickets from Pure Oil Company

10-27-2021

MGRRE_PureOilScoutTickets_Pinder_2_21127022210000

MGRRE

Western Michigan University

Follow this and additional works at: <https://scholarworks.wmich.edu/pure>



Part of the Geology Commons

WMU ScholarWorks Citation

MGRRE, "MGRRE_PureOilScoutTickets_Pinder_2_21127022210000" (2021). *Legacy Scout Tickets from Pure Oil Company*. 10865.

<https://scholarworks.wmich.edu/pure/10865>

This Document is brought to you for free and open access via ScholarWorks at WMU. It has been accepted for inclusion in Legacy Scout Tickets from Pure Oil Company by an authorized administrator of ScholarWorks at WMU. See the National Digital Catalogue - Science Base Catalogue for more collections submitted by MGRRE.



MGRRE_PureOilScoutTickets_Pinder_2_21127022210000

API 21127022210000

Permit Number 2221

Lease Name Pinder

Well Number 2

County Oceana

Township 15N

Range 16W

Section 31

2021 DEQ or Pure co_name Northcott, John B.

Pure Number 66

Latitude 43.65589

Longitude -86.27612

DATE November 8, 1934

LOCATION REPORT

No. 66

STATE Michigan COUNTY Oceana DIST. Elbridge TWP. Elbridge SEC. 31 TOWN 15N RANGE 16W
 WELL No. 2 (SERIAL No. 66) FARM Jane Pinder ACRES 16W.

NAME OF STREAM OR WATERS _____ QUADRANGLE SW-NW-NW.
SW-NW-NW

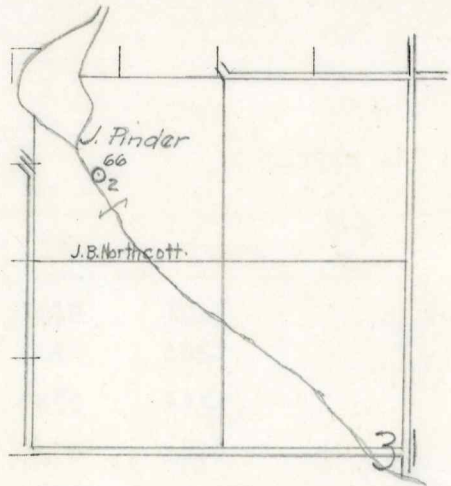
OPERATOR J. B. Northcott MAP Elbridge Township, Oceana County
J. B. Northcott Elbridge Twp - Oceana Co.

Feet from North Line of Farm
 600 + 600" East " " "
 441 + 441 South " " "
 720 + 720 West " " "
 Feet from North Line of Section
 441 + 441 East " " "
 South " " "
 441 + 441 West " " "

LEGEND

- LOCATION
- ⊙ RIG
- ⊕ DRILLING
- ⊛ GAS WELL
- OIL WELL
- ⊖ SMALL OIL WELL
- ⊛ DRY HOLE
- ⊛ DRY SHOWING OIL
- ⊛ DRY SHOWING GAS
- ⊛ ABANDONED LOCATION
- ⊛ ABANDONED GAS WELL
- ⊛ ABANDONED OIL WELL

NOTE: Below make tracing from map, (when no map is obtainable make sketch) showing farm, center of section, this location with measurements and also wells, dry holes, or other locations in the vicinity of this location. Make copy to keep for reference and send original to Columbus office.



REMARKS: _____

SIGNED R. L. Yeager
 Superintendent or Foreman.

Date 2/7/35 No. 66
 State Michigan County Oceana Dist. Elbridge
 (Serial No.) Twp. Elbridge Sec. 31 Twp. 15N Rge. 16W
 Well No. 2 (County No.) 66 Farm Jane Pinder Acres _____
 Operator John B. Northcott Information secured ~~from~~ Scouting Dept.
 Date well started 11/8/34 Date well completed 12/12/34 Elevation 705.3'

PRODUCTION RECORD

1st 24 hours natural Dry Hole
 2nd 24 hours natural _____
 Date of shot 1/16/35 No. of quarts 60 From 1857 to 1874 From _____ to _____
 Date of acid 12/13/34 & 12/27/34 No. of gallons 2000
 1st 24 hours after acid shot _____
 2nd 24 hours after acid shot _____

FORMATION AND CASING RECORD

Formation	Top	Bottom	Top Pay	Bottom Pay	Remarks	Casing	
						Size	Set at
Red Rock	1012	1015				10"	417'
" "	1042	1062				8 1/4"	520
Berea	1450	1454					
Antrim	1590	1808					
Traverse Form.	1808	1856 1/2					
" Lime	1856 1/2				Salt Water 1872-1874'		
Total Depth		1874					

Remarks Show Oil & Gas 1454' - Show Oil 1857'

Signed J.H. Bell