



Western Michigan University
ScholarWorks at WMU

Legacy Scout Tickets from Pure Oil Company

10-29-2021

MGRRE_PureOilScoutTickets_Pinder._2_21127023530000

MGRRE

Western Michigan University

Follow this and additional works at: <https://scholarworks.wmich.edu/pure>



Part of the Geology Commons

WMU ScholarWorks Citation

MGRRE, "MGRRE_PureOilScoutTickets_Pinder._2_21127023530000" (2021). *Legacy Scout Tickets from Pure Oil Company*. 10867.

<https://scholarworks.wmich.edu/pure/10867>

This Document is brought to you for free and open access via ScholarWorks at WMU. It has been accepted for inclusion in Legacy Scout Tickets from Pure Oil Company by an authorized administrator of ScholarWorks at WMU. See the National Digital Catalogue - Science Base Catalogue for more collections submitted by MGRRE.



MGRRE_PureOilScoutTickets_Pinder._2_21127023530000

API 21127023530000

Permit Number 2353

Lease Name Pinder.

Well Number 2

County Oceana

Township 15N

Range 16W

Section 31

2021 DEQ or Pure co_name Northcott, John B.

Pure Number 68

Latitude 43.65481

Longitude -86.27534

DATE February 21, 1935

LOCATION REPORT

No. 68

STATE Michigan COUNTY Oceana DIST. Elbridge TWP. Elbridge SEC. 31 TOWN 15N RANGE 16W. WELL No. 3 (SERIAL No. 68) FARM Jane Pinder

NAME OF STREAM OR WATERS QUADRANGLE S2-NW-NW S1-NW-NW

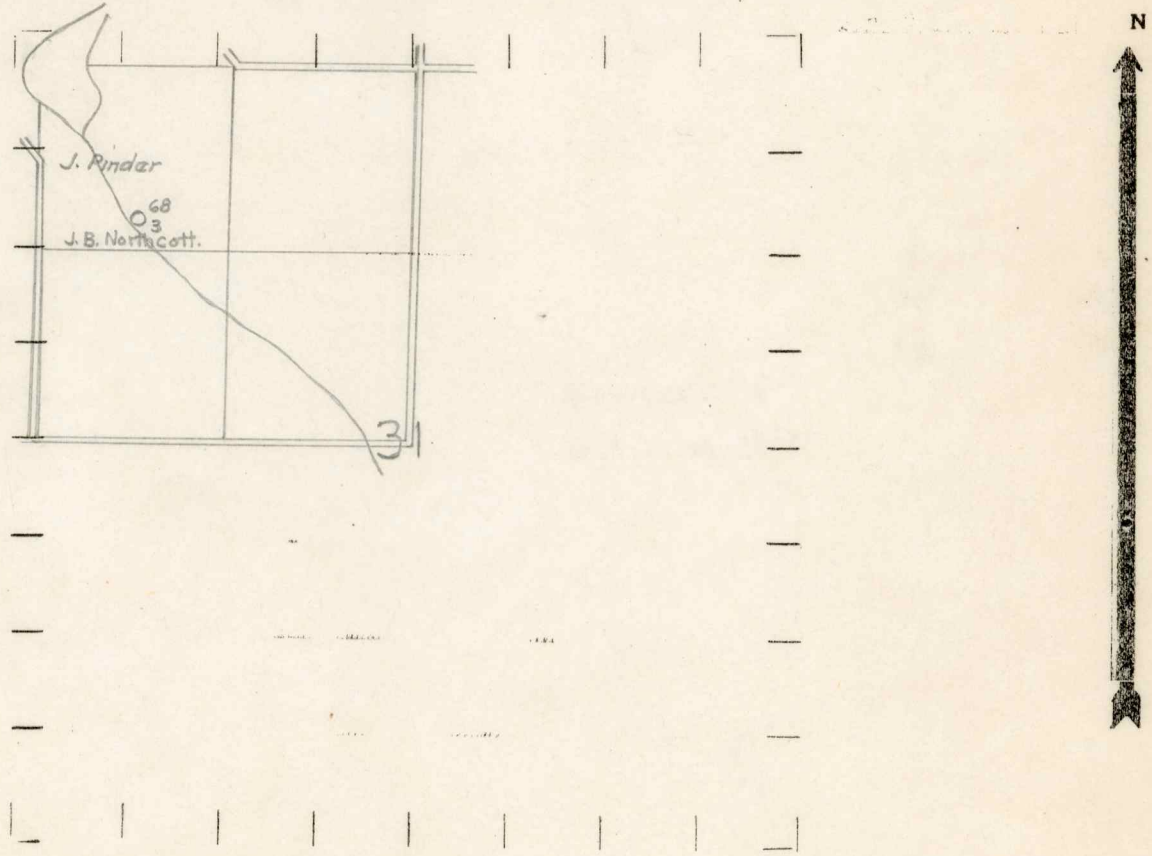
OPERATOR J. B. Northcott Map Elbridge Township, Oceana County Elbridge - Oceana Co.

Feet from North Line of Farm 210 210 East South West 650 650 1110 1110 Feet from North Line of Section 650 650 East South West

LEGEND

- LOCATION, RIG, DRILLING, GAS WELL, OIL WELL, SMALL OIL WELL, DRY HOLE, DRY SHOWING OIL, DRY SHOWING GAS, ABANDONED LOCATION, ABANDONED GAS WELL, ABANDONED OIL WELL

NOTE: Below make tracing from map, (when no map is obtainable make sketch) showing farm, center of section, this location with measurements and also wells, dry holes, or other locations in the vicinity of this location.



REMARKS:

SIGNED

Superintendent or Foreman.

COMPLETION RECORD OF WELLS DRILLED BY OTHER OPERATORS

Michigan Producing Division

Date June 13, 1935 No. 68
 State Michigan County Oceana Dist. Elbridge
 (Serial No.) Twp. 31 Sec. 15N Rge. 16W
 Well No. 3 (County No.) 68 Farm Jane Pinder Acres _____
 Operator John B. Northcott Information secured ~~from~~ by Scouting Dept.
 Date well started 3/9/35 Date well completed 4/26/35 Elevation 711.9'

PRODUCTION RECORD

1st 24 hours natural Dry Hole
 2nd 24 hours natural _____
 Date of shot _____ No. of quarts _____ From _____ to _____ From _____ to _____
 Date of acid _____ No. of gallons _____
 shot _____
 1st 24 hours after acid _____
 shot _____
 2nd 24 hours after acid _____

FORMATION AND CASING RECORD

Formation	Top	Bottom	Top Pay	Bottom Pay	Remarks	Casing	
						Size	Set at
Red Rock	1017					10"	420'
Traverse Formation	1803					8 1/4"	515'
" Lime	1852				Show Gas 1896'		
					Salt Water 1898'		
Total Depth		1900					

Remarks _____

Signed S. N. Bell