



Western Michigan University  
ScholarWorks at WMU

---

Legacy Scout Tickets from Pure Oil Company

---

10-30-2021

**MGRRE\_PureOilScoutTickets\_Smith\_2\_21127023570000**

MGRRE

*Western Michigan University*

Follow this and additional works at: <https://scholarworks.wmich.edu/pure>



Part of the Geology Commons

---

#### **WMU ScholarWorks Citation**

MGRRE, "MGRRE\_PureOilScoutTickets\_Smith\_2\_21127023570000" (2021). *Legacy Scout Tickets from Pure Oil Company*. 10868.

<https://scholarworks.wmich.edu/pure/10868>

This Document is brought to you for free and open access via ScholarWorks at WMU. It has been accepted for inclusion in Legacy Scout Tickets from Pure Oil Company by an authorized administrator of ScholarWorks at WMU. See the National Digital Catalogue - Science Base Catalogue for more collections submitted by MGRRE.



---

**MGRRE\_PureOilScoutTickets\_Smith\_2\_21127023570000**

API 21127023570000

Permit Number 2357

Lease Name Smith

Well Number 2

County Oceana

Township 15N

Range 17W

Section 36

2021 DEQ or Pure co\_name Nelson, H. C.

Pure Number 69

Latitude 43.65672

Longitude -86.28183

DATE February 21, 1935

LOCATION REPORT

No. 69

STATE Michigan COUNTY Oceana DIST. Hart TWP. Hart SEC. 36 TOWN 15N RANGE 17W

WELL No. 2 2 (SERIAL No. 69) FARM Viola Smith ACRES

NAME OF STREAM OR WATERS QUADRANGLE NW-NE-NE

OPERATOR H. C. Nelson Map Hart Township, Oceana County

450 450 Feet from North Line of Farm

" " East " " "

" " South " " "

250 250 " " West " " "

450 450 Feet from North Line of Section

1070 1070 " " East " " "

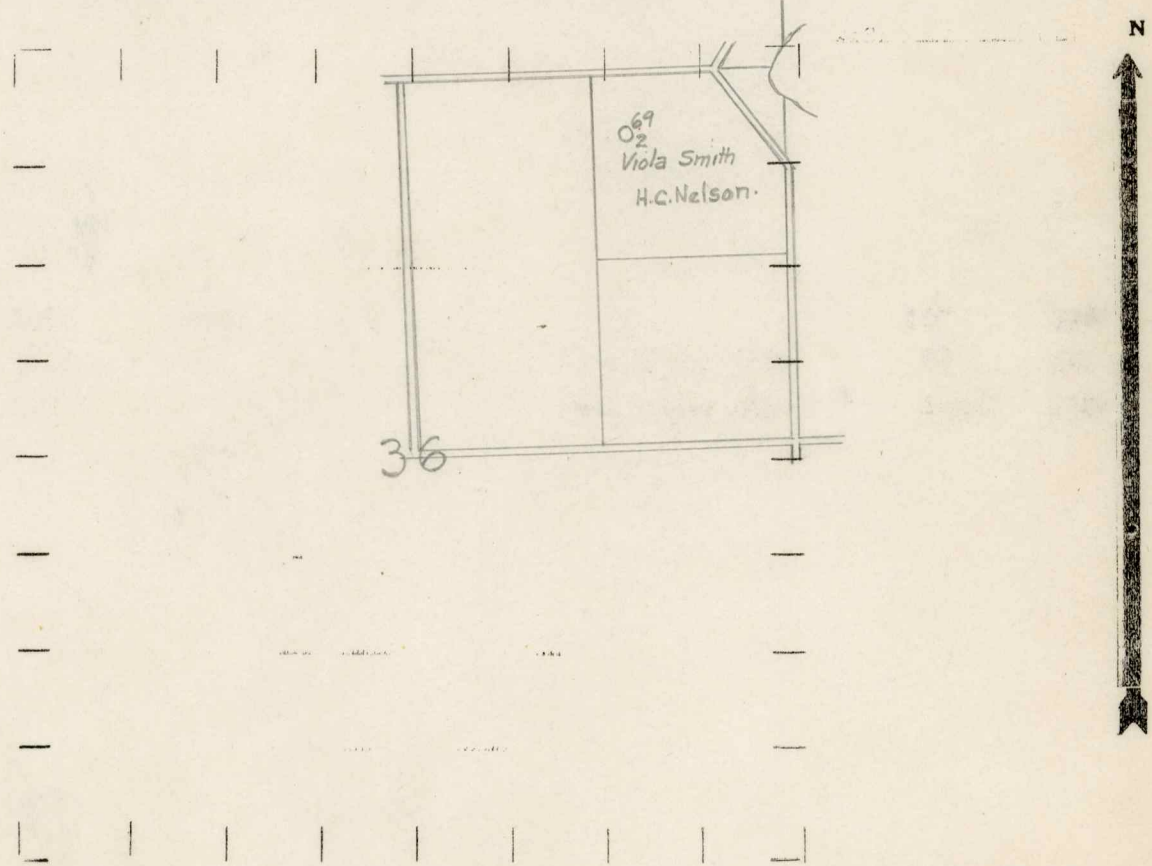
" " South " " "

" " West " " "

LEGEND

- LOCATION
- ⊙ RIG
- ⊕ DRILLING
- ☀ GAS WELL
- OIL WELL
- ⊖ SMALL OIL WELL
- ⊖ DRY HOLE
- ⊖ DRY SHOWING OIL
- ⊖ DRY SHOWING GAS
- ⊖ ABANDONED LOCATION
- ☀ ABANDONED GAS WELL
- ⊖ ABANDONED OIL WELL

NOTE: Below make tracing from map, (when no map is obtainable make sketch) showing farm, center of section, this location with measurements and also wells, dry holes, or other locations in the vicinity of this location.



REMARKS:

SIGNED

Superintendent or Foreman.



