



Western Michigan University
ScholarWorks at WMU

Legacy Scout Tickets from Pure Oil Company

10-31-2021

MGRRE_PureOilScoutTickets_Lewis_1_21127023980000

MGRRE

Western Michigan University

Follow this and additional works at: <https://scholarworks.wmich.edu/pure>



Part of the Geology Commons

WMU ScholarWorks Citation

MGRRE, "MGRRE_PureOilScoutTickets_Lewis_1_21127023980000" (2021). *Legacy Scout Tickets from Pure Oil Company*. 10869.

<https://scholarworks.wmich.edu/pure/10869>

This Document is brought to you for free and open access via ScholarWorks at WMU. It has been accepted for inclusion in Legacy Scout Tickets from Pure Oil Company by an authorized administrator of ScholarWorks at WMU. See the National Digital Catalogue - Science Base Catalogue for more collections submitted by MGRRE.



MGRRE_PureOilScoutTickets_Lewis_1_21127023980000

API 21127023980000

Permit Number 2398

Lease Name Lewis

Well Number 1

County Oceana

Township 13N

Range 15W

Section 16

2021 DEQ or Pure co_name Reed Oil Company

Pure Number 70

Latitude 43.52515

Longitude -86.10802

THE PURE OIL COMPANY

LOCATION REPORT

DATE 4-4-35

No. 70

STATE Michigan COUNTY Oceana

DIST Greenwood TWP Greenwood

SEC 16

TOWN 13-N RANGE 15-W

WELL No. 1 (SERIAL No. 70) FARM

PREG. W.E. Lewis

ACRES

NAME OF STREAM OR WATERS

QUADRANGLE NW-NE-NE NW-NE-NE

OPERATOR Reed Oil Co.

Map Greenwood Twp., Oceana Co. Greenwood - Oceana.

320 320 Feet from North Line of Farm

East

South

360 360 West

320 320 Feet from North Line of Section

East

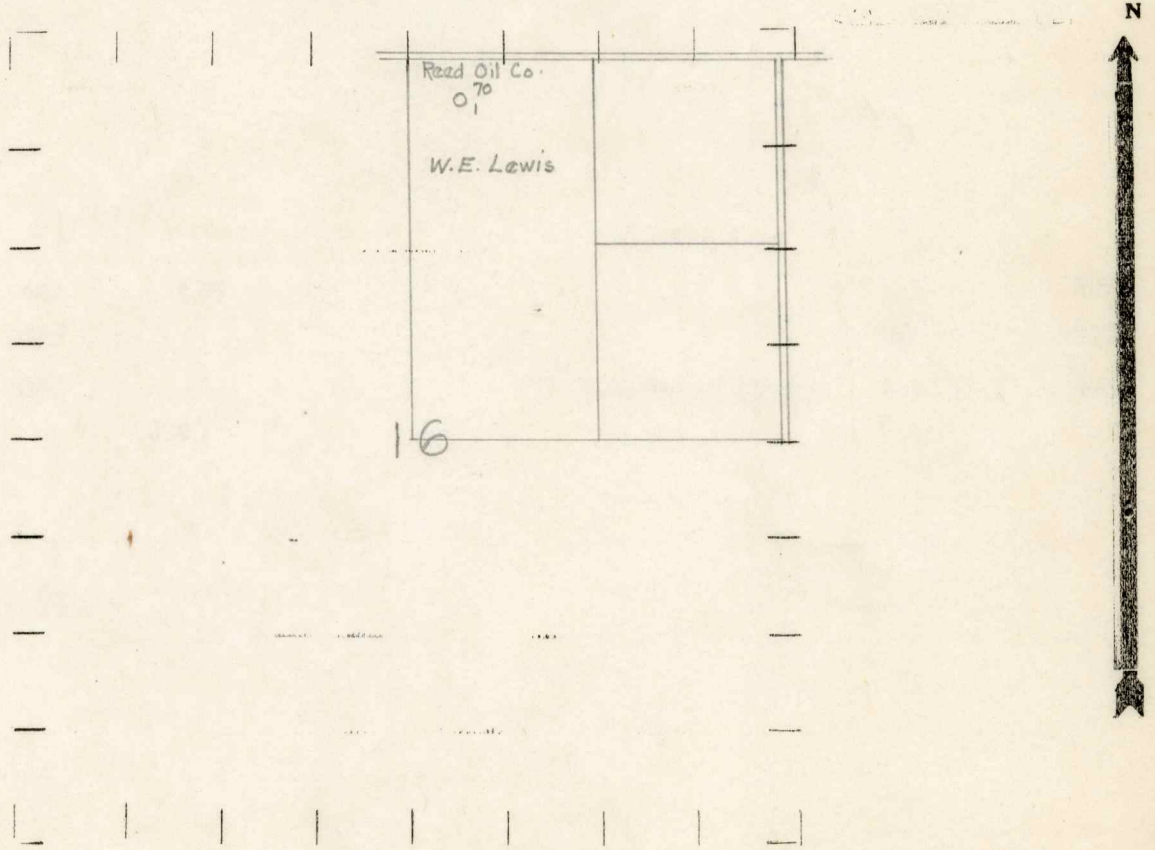
South

360 360 West 1/4

LEGEND

- LOCATION
- ⊙ RIG
- ⊕ DRILLING
- ☀ GAS WELL
- OIL WELL
- ⊖ SMALL OIL WELL
- ⊖ DRY HOLE
- ⊖ DRY SHOWING OIL
- ⊖ DRY SHOWING GAS
- ⊖ ABANDONED LOCATION
- ⊖ ABANDONED GAS WELL
- ⊖ ABANDONED OIL WELL

NOTE: Below make tracing from map, (when no map is obtainable make sketch) showing farm, center of section, this location with measurements and also wells, dry holes, or other locations in the vicinity of this location.



REMARKS:

SIGNED

R.L. Yeager

Superintendent or Foreman.

COMPLETION RECORD OF WELLS DRILLED BY OTHER OPERATORS

Michigan Producing Division

Date May 23, 1935 No. 70
 State Michigan County Oceana Dist. Greenwood Sec. 16 Twp. 13N Rge. 15W
 Well No. 1 (Serial No.) (County No.) 70 Farm W. E. Lewis Acres _____
 Operator Reed Oil Company Information secured ~~from~~ ^{by} Scouting Dept.
 Date well started 4/10/35 Date well completed 5/18/35 Elevation 697.9'

PRODUCTION RECORD

1st 24 hours natural Dry Hole
 2nd 24 hours natural _____
 Date of shot _____ No. of quarts _____ From _____ to _____ From _____ to _____
 Date of acid _____ No. of gallons _____
 1st 24 hours after acid shot _____
 2nd 24 hours after acid shot _____

FORMATION AND CASING RECORD

Formation	Top	Bottom	Top Pay	Bottom Pay	Remarks	Casing	
						Size	Set at
Marshall	442	635				10"	289'
Red Rock	1038					8 1/4"	370
Traverse Lime	2050				H.F.S. Water 2060-2063'	6-5/8"	647
Total Depth		2063'					

Remarks _____

Signed S. V. Bell