



Western Michigan University
ScholarWorks at WMU

Legacy Scout Tickets from Pure Oil Company

11-2-2021

MGRRE_PureOilScoutTickets_Fee_1_21127027830000

MGRRE

Western Michigan University

Follow this and additional works at: <https://scholarworks.wmich.edu/pure>



Part of the Geology Commons

WMU ScholarWorks Citation

MGRRE, "MGRRE_PureOilScoutTickets_Fee_1_21127027830000" (2021). *Legacy Scout Tickets from Pure Oil Company*. 10871.

<https://scholarworks.wmich.edu/pure/10871>

This Document is brought to you for free and open access via ScholarWorks at WMU. It has been accepted for inclusion in Legacy Scout Tickets from Pure Oil Company by an authorized administrator of ScholarWorks at WMU. See the National Digital Catalogue - Science Base Catalogue for more collections submitted by MGRRE.



MGRRE_PureOilScoutTickets_Fee_1_21127027830000

API 21127027830000

Permit Number 2783

Lease Name Fee

Well Number 1

County Oceana

Township 15N

Range 16W

Section 31

2021 DEQ or Pure co_name Northcott, John B.

Pure Number 72

Latitude 43.65199

Longitude -86.27184

DATE September 26, 1935

LOCATION REPORT

No. 72

STATE Michigan COUNTY Oceana DIST. Elbridge TWP. Elbridge SEC. 31 TOWN 15N RANGE 16W

WELL No. 1 (SERIAL No. 72) FARM John B. Northcott (Fee) ACRES

NAME OF STREAM OR WATERS QUADRANGLE SW-SE-NW

OPERATOR John B. Northcott Map Elbridge Township, Oceana County

John B. Northcott Elbridge - Oceana Co.

Feet from North Line of Farm

" " East " " "

512 512 " " South " " "

255 255 " " West " " "

Feet from North Line of Section

1065 1065 " " East " " $\frac{1}{4}$ "

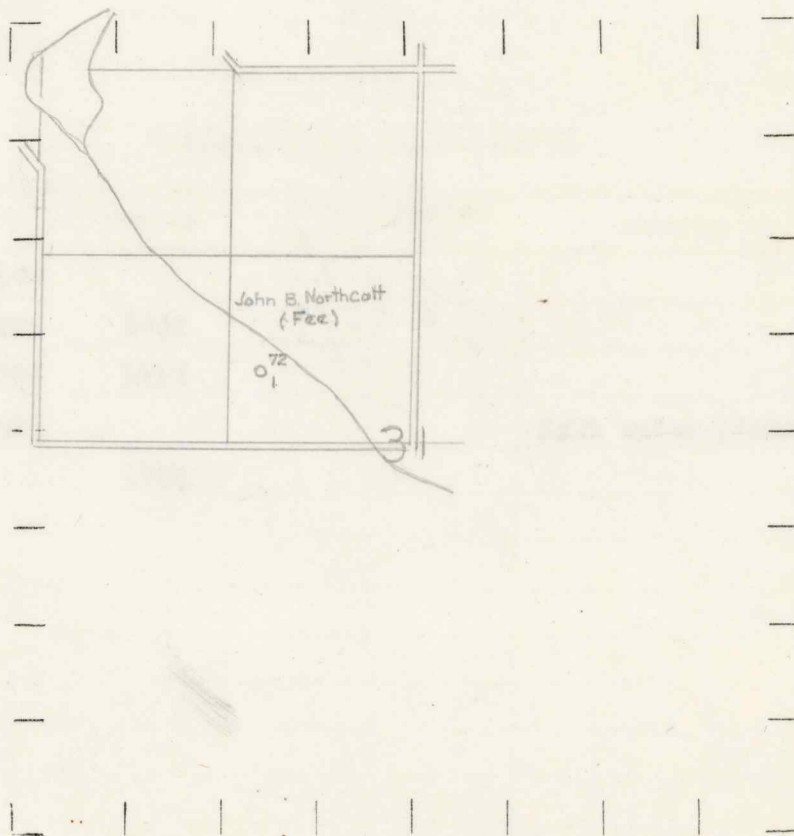
512 512 " " South " " $\frac{1}{4}$ "

" " West " " "

LEGEND

- LOCATION
- ⊕ DRILLING
- ☀ GAS WELL
- OIL WELL
- ⬮ SMALL OIL WELL
- ⊖ DRY HOLE
- ⬮ DRY SHOWING OIL
- ☀ DRY SHOWING GAS
- ⊖ ABANDONED LOCATION
- ☀ ABANDONED GAS WELL
- ⬮ ABANDONED OIL WELL

NOTE: Below make tracing from map, (when no map is obtainable make sketch) showing farm, center of section, this location with measurements and also wells, dry holes, or other locations in the vicinity of this location.



REMARKS:

SIGNED

R. L. Yager

Superintendent or Foreman.

