



Legacy Scout Tickets from Pure Oil Company

---

11-3-2021

## MGRRE\_PureOilScoutTickets\_White River Land Co Tract\_1\_21127059350000

MGRRE

*Western Michigan University*

Follow this and additional works at: <https://scholarworks.wmich.edu/pure>



Part of the Geology Commons

---

### WMU ScholarWorks Citation

MGRRE, "MGRRE\_PureOilScoutTickets\_White River Land Co Tract\_1\_21127059350000" (2021). *Legacy Scout Tickets from Pure Oil Company*. 10872.  
<https://scholarworks.wmich.edu/pure/10872>

This Document is brought to you for free and open access via ScholarWorks at WMU. It has been accepted for inclusion in Legacy Scout Tickets from Pure Oil Company by an authorized administrator of ScholarWorks at WMU. See the National Digital Catalogue - Science Base Catalogue for more collections submitted by MGRRE.



---

**MGRRE\_PureOilScoutTickets\_White River Land Co Tract\_1\_21127059350000**

API 21127059350000

Permit Number 5935

Lease Name White River Land Co Tract

Well Number 1

County Oceana

Township 13N

Range 16W

Section 27

2021 DEQ or Pure co\_name White, River Land Company

Pure Number 73

Latitude 43.49326

Longitude -86.20989

THE PURE OIL COMPANY

LOCATION REPORT

DATE March 16, 1939

No. 73

STATE Michigan COUNTY Oceana DIST. Otto TWP. Otto SEC. 27 TOWN 13 N RANGE 16 W  
WELL No. 1 (SERIAL No. 73) FARM Fee ACRES

NAME OF STREAM OR WATERS \_\_\_\_\_ QUADRANGLE NE-SE-NW  
NE SE NW

OPERATOR White River Land Company Map Otto Township, Oceana County

320 330 Feet from North Line of Farm  
320 330 " " East " " "

" " South " " "  
" " West " " "

Feet from North Line of Section  
320 330 " " East " " "

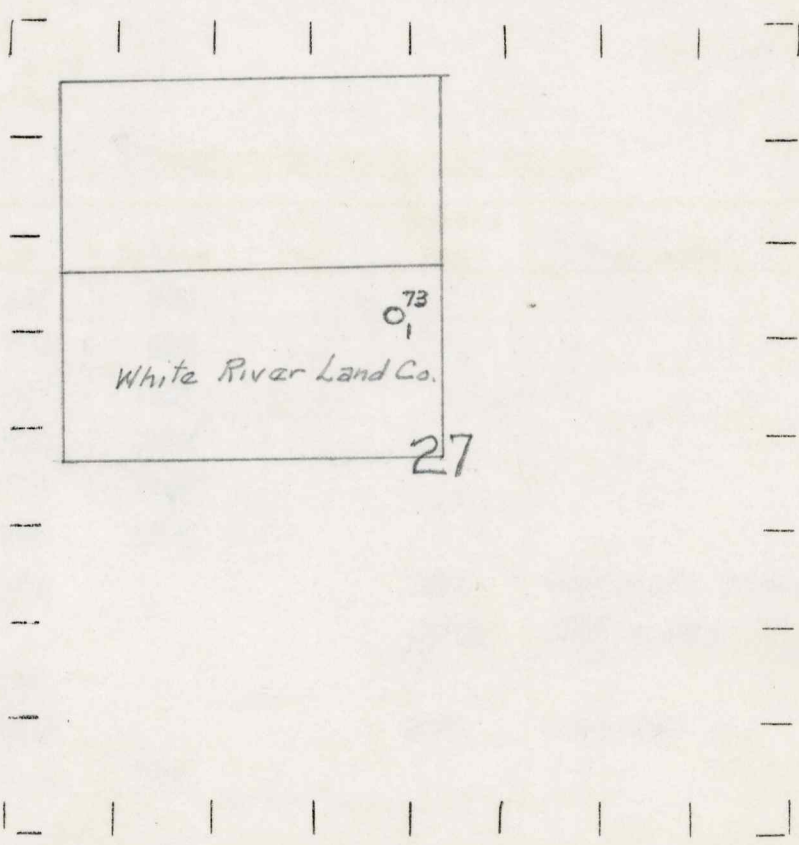
990 990 " " South " " "  
" " West " " "

Otto - Oceana

LEGEND

- LOCATION
- ⊙ RIG
- ⊕ DRILLING
- ☀ GAS WELL
- OIL WELL
- ⦿ SMALL OIL WELL
- ⊖ DRY HOLE
- ⦿ DRY SHOWING OIL
- ⊖ DRY SHOWING GAS
- ⊖ ABANDONED LOCATION
- ☀ ABANDONED GAS WELL
- ⦿ ABANDONED OIL WELL

NOTE: Below make tracing from map, (when no map is obtainable make sketch) showing farm, center of section, this location with measurements and also wells, dry holes, or other locations in the vicinity of this location.



REMARKS: \_\_\_\_\_  
\_\_\_\_\_  
\_\_\_\_\_

SIGNED R. L. Y.  
Superintendent or Foreman.

COMPLETION RECORD OF WELLS DRILLED BY OTHER OPERATORS

Michigan Producing Division

Date **June 29, 1939** No. **73**  
 State **Mich.** County **Oceana** Dist. **Otto** Twp. **Otto** Sec. **27** Twp. **13 N** Rge. **16 W**  
 Well No. **1** (Serial No.) **73** Farm **Fee** Acres  
 Operator **White River Land Company** Information secured **By FROM Scouting Department**  
 Date well started **3-18-39** Dated well completed **6-20-39** Elevation **671.0**

PRODUCTION RECORD

1st 24 hours natural **Dry Hole**  
 2nd 24 hours natural  
 Date of shot No. of quarts From to From to  
 Date of acid No. of gallons  
 1st 24 hours after acid shot  
 2nd 24 hours after acid shot

FORMATION AND CASING RECORD

Formation	Top	Bottom	Top Pay	Bottom Pay	Remarks	Casing	
						Size	Set at
Marshall	394	500				10"	291
Coldwater Lime	785	810				8-1/4"	528
Red Rock	1097	1107				6-5/8"	2304
" "	1120	1125					
Berea	1155	1150					
Antrim	1695	1865					
Traverse Lime	1928			1928 1929 1/2	Very small show gas. Salt water.		
Dundee	2344						
Monroe	2399			2454	Water-200 ft.		
Total Depth		2454					

Remarks

Signed **D. C. Shackelford**