



Western Michigan University  
ScholarWorks at WMU

---

Legacy Scout Tickets from Pure Oil Company

---

11-5-2021

**MGRRE\_PureOilScoutTickets\_Lacomte, A.\_1\_21127077420000**

MGRRE

*Western Michigan University*

Follow this and additional works at: <https://scholarworks.wmich.edu/pure>



Part of the Geology Commons

---

#### **WMU ScholarWorks Citation**

MGRRE, "MGRRE\_PureOilScoutTickets\_Lacomte, A.\_1\_21127077420000" (2021). *Legacy Scout Tickets from Pure Oil Company*. 10874.

<https://scholarworks.wmich.edu/pure/10874>

This Document is brought to you for free and open access via ScholarWorks at WMU. It has been accepted for inclusion in Legacy Scout Tickets from Pure Oil Company by an authorized administrator of ScholarWorks at WMU. See the National Digital Catalogue - Science Base Catalogue for more collections submitted by MGRRE.



---

**MGRRE\_PureOilScoutTickets\_Lacomte, A.\_1\_21127077420000**

API 21127077420000

Permit Number 7742

Lease Name Lacomte, A.

Well Number 1

County Oceana

Township 13N

Range 18W

Section 35

2021 DEQ or Pure co\_name Welsh Oil Company

Pure Number 77

Latitude 43.47861

Longitude -86.42112

DATE June 12, 1940

No. 77

STATE Michigan COUNTY Oceana DIST. Claybanks TWP. Claybanks SEC. 35 TOWN 13 N RANGE 18 W  
WELL No. 1 (SERIAL No. 77) FARM A. Lacomte ACRES

NAME OF STREAM OR WATERS A. Lacomte QUADRANGLE NW NE SE

OPERATOR Welsh Oil Company Map Claybanks Township, Oceana County

330 330 Feet from North Line of Farm  
990 990 " " East " " "

" " South " " "  
" " West " " "

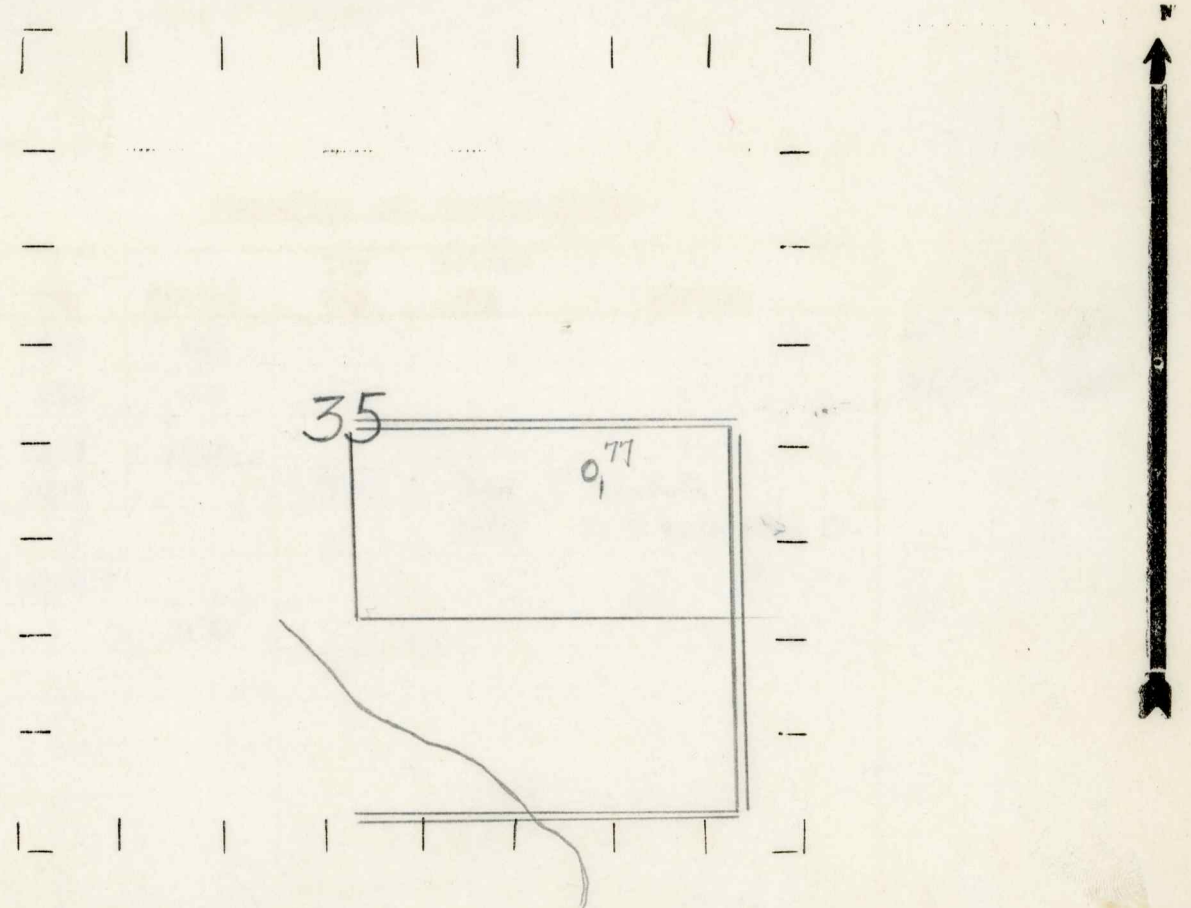
330 330 Feet from North Line of Section  
990 990 " " East " " "

" " South " " "  
" " West " " "

LEGEND

- LOCATION
- ⊙ RIG
- ⊕ DRILLING
- ☀ GAS WELL
- OIL WELL
- ⬮ SMALL OIL WELL
- ⊙ DRY HOLE
- ⬮ DRY SHOWING OIL
- ☀ DRY SHOWING GAS
- ⊙ ABANDONED LOCATION
- ☀ ABANDONED GAS WELL
- ⬮ ABANDONED OIL WELL

NOTE: Below make tracing from map. (when no map is obtainable make sketch) showing farm, center of section, this location with measurements and also wells, dry holes, or other locations in the vicinity of this location.



REMARKS:

SIGNED

Superintendent or Foreman.

Michigan Producing Division

Date July 10, 1940 No. 77  
 State Mich. County Oceana Dist. Claybanks Twp. Claybanks Sec. 35 Twp. 13 N Rge. 18 W  
 Well No. 1 (Serial No.) 77 Farm A. Lacomte Acres \_\_\_\_\_  
 Operator Welsh Oil Company Information secured By Scouting Department  
 Date well started 5-25-40 Dated well completed 6-30-40 Elevation 689.1

PRODUCTION RECORD

1st 24 hours natural Dry Hole  
 2nd 24 hours natural \_\_\_\_\_  
 Date of shot \_\_\_\_\_ No. of quarts \_\_\_\_\_ From \_\_\_\_\_ to \_\_\_\_\_ From \_\_\_\_\_ to \_\_\_\_\_  
 Date of acid \_\_\_\_\_ No. of gallons \_\_\_\_\_  
 1st 24 hours after acid shot \_\_\_\_\_  
 2nd 24 hours after acid shot \_\_\_\_\_

FORMATION AND CASING RECORD

Formation	Top	Bottom	Top Pay	Bottom Pay	Remarks	Casing	
						Size	Set at
Coldwater Lime	625	665				10"	437
Red Rock	865	900				6-5/8"	1839
Antrim	1450	1648					
Traverse Lime	1707		1746	1749	H.F.S.W.		
				1965	Salt water-800 ft.		
Dundee	2100 ?						
Total Depth		2170					

Remarks \_\_\_\_\_  
 \_\_\_\_\_  
 \_\_\_\_\_

Signed D. C. Shackelford