



Western Michigan University
ScholarWorks at WMU

Legacy Scout Tickets from Pure Oil Company

8-22-2021

MGRRE_PureOilScoutTickets_Cornwell Ranch_1_unk

MGRRE

Western Michigan University

Follow this and additional works at: <https://scholarworks.wmich.edu/pure>



Part of the Geology Commons

WMU ScholarWorks Citation

MGRRE, "MGRRE_PureOilScoutTickets_Cornwell Ranch_1_unk" (2021). *Legacy Scout Tickets from Pure Oil Company*. 10890.

<https://scholarworks.wmich.edu/pure/10890>

This Document is brought to you for free and open access via ScholarWorks at WMU. It has been accepted for inclusion in Legacy Scout Tickets from Pure Oil Company by an authorized administrator of ScholarWorks at WMU. See the National Digital Catalogue - Science Base Catalogue for more collections submitted by MGRRE.



MGRRE_PureOilScoutTickets_Cornwell Ranch_1_unk

API unk

Permit Number unk

Lease Name Cornwell Ranch

Well Number 1

County Cheboygan

Township 33N

Range 2W

Section 28

2021 DEQ or Pure co_name Teater Oil Co

Pure Number 7

Latitude 45.221814

Longitude -84.559876

THE PURE OIL COMPANY

LOCATION REPORT

No. 7

DATE November 10, 1938

STATE Mich. COUNTY *Cheboygan* DIST. *Nunda* TWP. *Nunda* SEC. *28* TOWN *33 N* RANGE *2 W*

WELL No. *1* (SERIAL No. *7*) FARM *Cornwell Ranch* ACRES

NAME OF STREAM OR WATERS QUADRANGLE *NE SE SE*

OPERATOR *Teater Oil Company (Coretest)* Map *Nunda Township, Cheboygan County*

Teater Oil Co. (Core Test) Feet from North Line of Farm *Nunda - Cheboygan.*

Feet from North Line of Farm " " East " " "

No measurements " " South " " "

Measurements given. " " West " " "

Given. Feet from North Line of Section

" " East " " "

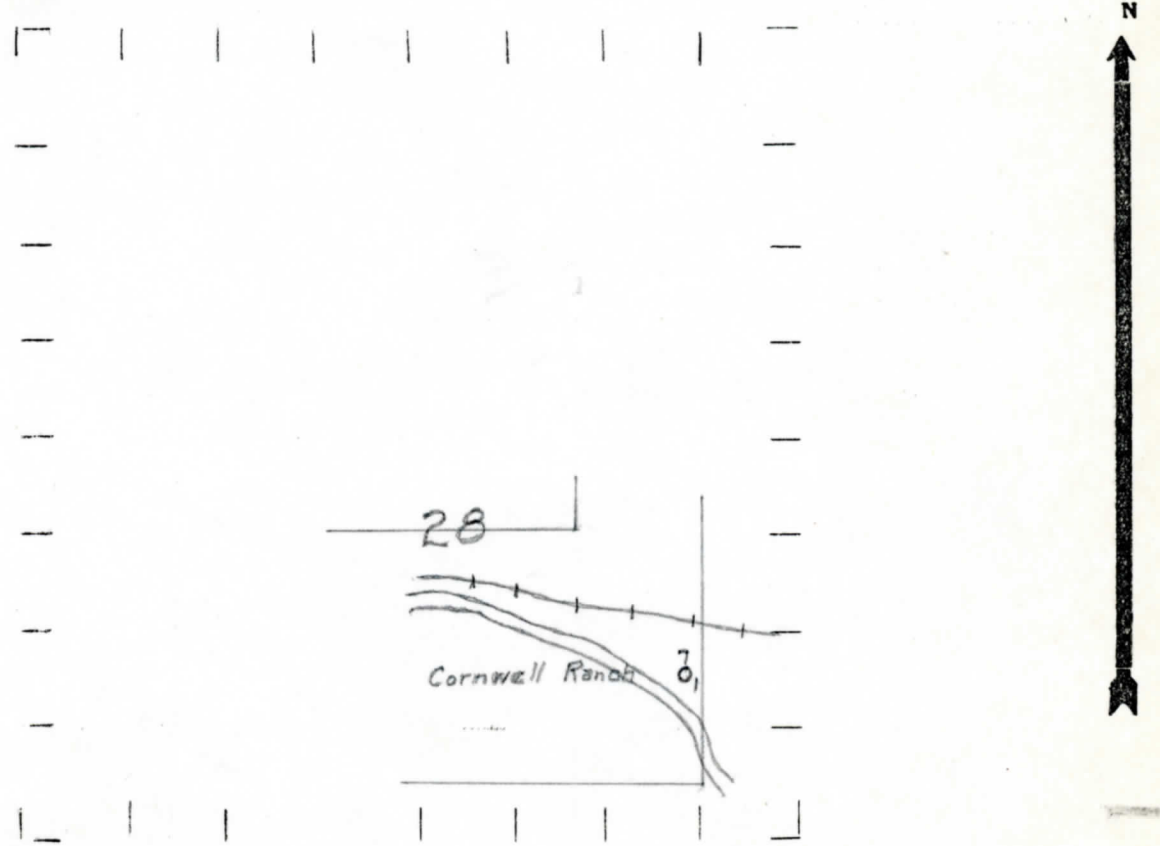
" " South " " "

" " West " " "

LEGEND

- LOCATION
- ⊕ DRILLING
- ⊗ GAS WELL
- OIL WELL
- ⦿ SMALL OIL WELL
- ⊙ DRY HOLE
- ⦿ DRY SHOWING OIL
- ⊙ DRY SHOWING GAS
- ⊙ ABANDONED LOCATION
- ⊙ ABANDONED GAS WELL
- ⦿ ABANDONED OIL WELL

NOTE: Below make tracing from map, (when no map is obtainable make sketch) showing farm, center of section, this location with measurements and also wells, dry holes, or other locations in the vicinity of this location.



REMARKS: Elevation 836. *836*

SIGNED

P. L. G.

Superintendent or Foreman.