



Western Michigan University  
ScholarWorks at WMU

---

Legacy Scout Tickets from Pure Oil Company

---

8-22-2021

## MGRRE\_PureOilScoutTickets\_Nelis, Merle\_1\_unk

MGRRE

*Western Michigan University*

Follow this and additional works at: <https://scholarworks.wmich.edu/pure>



Part of the Geology Commons

---

### WMU ScholarWorks Citation

MGRRE, "MGRRE\_PureOilScoutTickets\_Nelis, Merle\_1\_unk" (2021). *Legacy Scout Tickets from Pure Oil Company*. 10892.

<https://scholarworks.wmich.edu/pure/10892>

This Document is brought to you for free and open access via ScholarWorks at WMU. It has been accepted for inclusion in Legacy Scout Tickets from Pure Oil Company by an authorized administrator of ScholarWorks at WMU. See the National Digital Catalogue - Science Base Catalogue for more collections submitted by MGRRE.



---

## MGRRE\_PureOilScoutTickets\_Nelis, Merle\_1\_unk

API unk

Permit Number unk

Lease Name Nelis, Merle

Well Number 1

County Crawford

Township 25N

Range 2W

Section 31

2021 DEQ or Pure co\_name Walker Bell Co

Pure Number 6

Latitude 44.5185348

Longitude -84.6006636

THE PURE OIL COMPANY

DATE July - 24, 1935  
7/24/35

CORRECTED

## LOCATION REPORT

CORRECTED

No. 66STATE Mich.COUNTY Crawford

DIST.

TWP. South BranchSEC. 31TOWN 25NRANGE 2WWELL No. 2 (SERIAL No. 6) FARMMerle Nelis(Core-test)

ACRES

NAME OF STREAM OR WATERS

QUADRANGLE

NE-NE-SEOPERATOR Walker Bell Company ??

MAP

South Branch - Crawford Co.  
South Branch Township, Crawford County

Feet from North Line of Farm

" " East " " "

" " South " " "

" " West " " "

Feet from North Line of Section

" " East " " "

" " South " " "

" " West " " "

## LEGEND

O LOCATION

① RIG

⊕ DRILLING

⊗ GAS WELL

● OIL WELL

⬮ SMALL OIL WELL

⊗ DRY HOLE

⬮ DRY SHOWING OIL

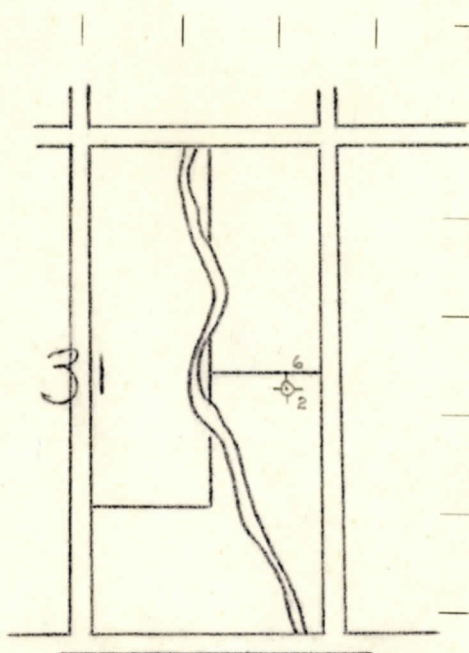
⊗ DRY SHOWING GAS

⊗ ABANDONED LOCATION

⬮ ABANDONED GAS WELL

⬮ ABANDONED OIL WELL

NOTE: Below make tracing from map, (when no map is obtainable make sketch) showing farm, center of section, this location with measurements and also wells, dry holes, or other locations in the vicinity of this location. Make copy to keep for reference and send original to the Columbus office.



This well formerly located NW-NW-NW-sec 5 Higgins Twp 24N-2W.

REMARKS: This well was formerly located NW NW NW Section 5, Higgins Township, 24N-2W

SIGNED

R. L. Yeager  
Sup't or Foreman.