



Western Michigan University  
ScholarWorks at WMU

---

Legacy Color Lithology Strip Logs

---

5-16-2022

**MGRRE\_LithStripLog\_REDMOND, CLARENCE W. & ALICE  
1\_21037097370000**

MGRRE Western Michigan University

Follow this and additional works at: <https://scholarworks.wmich.edu/lith>



Part of the Geology Commons

---

#### **WMU ScholarWorks Citation**

Western Michigan University, MGRRE, "MGRRE\_LithStripLog\_REDMOND, CLARENCE W. & ALICE 1\_21037097370000" (2022). *Legacy Color Lithology Strip Logs*. 195.  
<https://scholarworks.wmich.edu/lith/195>

This Document is brought to you for free and open access by ScholarWorks at WMU. It has been accepted for inclusion in Legacy Color Lithology Strip Logs by an authorized administrator of ScholarWorks at WMU. For more information, please contact [wmu-scholarworks@wmich.edu](mailto:wmu-scholarworks@wmich.edu).





B2th

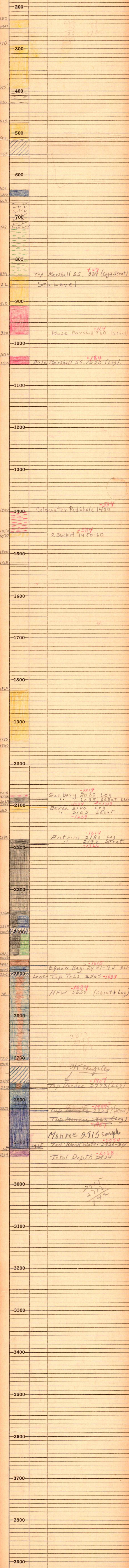
# SINCLAIR PRAIRIE OIL COMPANY

STATE <b>Mich</b>		COMPANY <b>American Drilling Co</b>	
COUNTY <b>Clinton</b>		FARM <b>CW &amp; A Redmont</b>	WELL NO. <b>1</b>
T. <b>S-N</b>	R. <b>1-W</b>	COMMENCED <b>9-21-42</b>	
ELEV. <b>865.8</b>		COMPLETED <b>10-28-42</b>	
PRODUCTION <b>D &amp; H.</b>		REMARKS <b>CN 1/2 NENE Sec 20 330 NLT + 660 EL.</b>	

Record = Driller's Log  
+ Scout Ticket.

Casing Record  
Log. Scout.

10"	1465	164
8"	724	727
6"	1121	1110
5"	2238	2718.



0-175 Drift - Mud Sand Gravel

Top Marshall SS. 889 (Log & Scout)

Sea Level.

Base Marshall SS. 1050 (Log)

Colwater Red Shale 1400

2 BWPH 1430-60

Sunbury 2080 Log  
" 2085 Scout SIM

Berca 2100 Log  
" 2105 Scout

Hartman 2180 Log  
" 2192 Scout

Squaw Bay 2481-95 SIM

Lower Top Trls 2505-1637

HFw 2550 (Scout & Log)

Top Dundee 2773 (Log)

Top Monroe 2823 (Log)

Monroe 2915 sample

700' Black Water 2920-24

Total Depth 2934

2915  
2773  
2718  
142