



Western Michigan University
ScholarWorks at WMU

Legacy Scout Tickets from Pure Oil Company

8-20-2021

MGRRE_PureOilScoutTickets_Hubbard_1_21025008640000

MGRRE

Western Michigan University

Follow this and additional works at: <https://scholarworks.wmich.edu/pure>



Part of the Geology Commons

WMU ScholarWorks Citation

MGRRE, "MGRRE_PureOilScoutTickets_Hubbard_1_21025008640000" (2021). *Legacy Scout Tickets from Pure Oil Company*. 10954.

<https://scholarworks.wmich.edu/pure/10954>

This Document is brought to you for free and open access via ScholarWorks at WMU. It has been accepted for inclusion in Legacy Scout Tickets from Pure Oil Company by an authorized administrator of ScholarWorks at WMU. See the National Digital Catalogue - Science Base Catalogue for more collections submitted by MGRRE.



MGRRE_PureOilScoutTickets_Hubbard_1_21025008640000

API 21025008640000

Permit Number 864

Lease Name Hubbard

Well Number 1

County Calhoun

Township 02S

Range 06W

Section 14

2021 DEQ or Pure co_name St. Clair Oil and Gas Corporation

Pure Number 6

Latitude 42.29854

Longitude -84.97108

DATE Jan. 10th, 1930.

THE PEOPLES OIL COMPANY

LOCATION REPORT

No. 0

STATE Michigan COUNTY Calhoun DIST. Marshall SEC. 14 TOWN 2 S RANGE 6 W
 WELL No. 1 (SERIAL No. 6) FARM O. L. Hubbard ACRES

NAME OF STREAM OR WATERS _____ QUADRANGLE SW $\frac{1}{4}$ - NE $\frac{1}{4}$ OPERATOR St. Clair et al MAP Marshall Township, Calhoun County_____ 315 Feet from North Line of Farm_____ 1625 " " East " " "

_____ " " South " " "

_____ " " West " " "

_____ 1635 Feet from North Line of Section_____ 1625 " " East " " "

_____ " " South " " "

_____ " " West " " "

LEGEND

○ LOCATION

① RIG

⊕ DRILLING

⊗ GAS WELL

● OIL WELL

⬮ SMALL OIL WELL

⬮ DRY HOLE

⬮ DRY SHOWING OIL

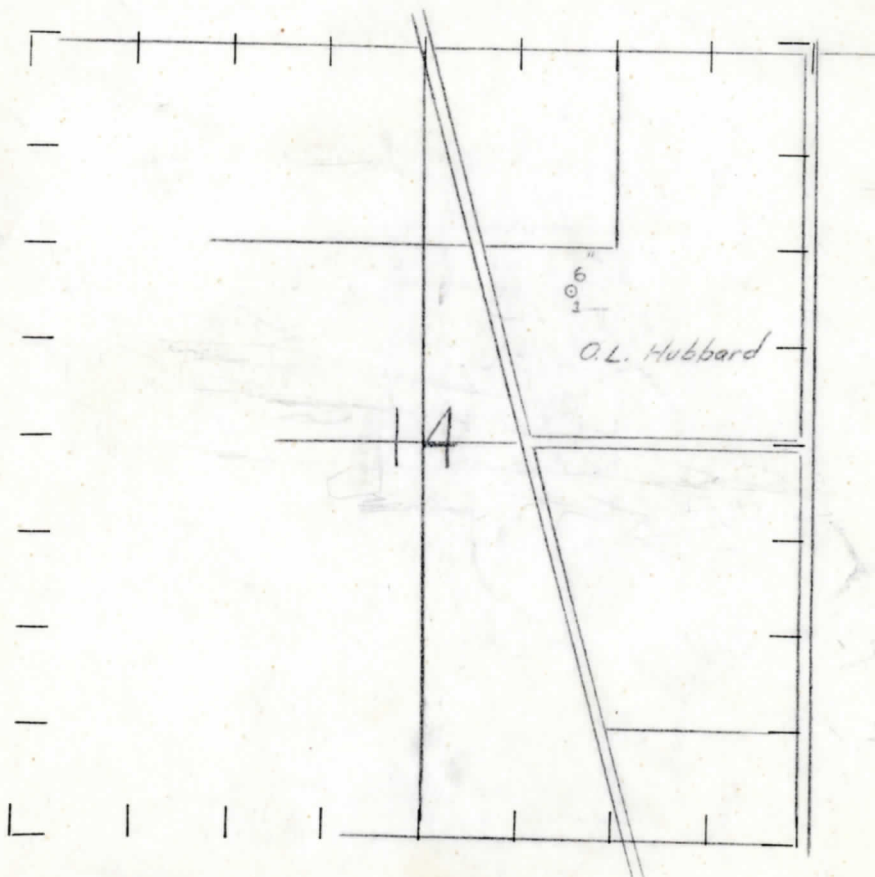
⬮ DRY SHOWING GAS

⬮ ABANDONED LOCATION

⬮ ABANDONED GAS WELL

⬮ ABANDONED OIL WELL

NOTE: Below make tracing from map, (when no map is obtainable make sketch) showing farm, center of section, this location with measurements and also wells, dry holes, or other locations in the vicinity of this location. Make copy to keep for reference and send original to Columbus office.

REMARKS: CORRECTED LOCATION

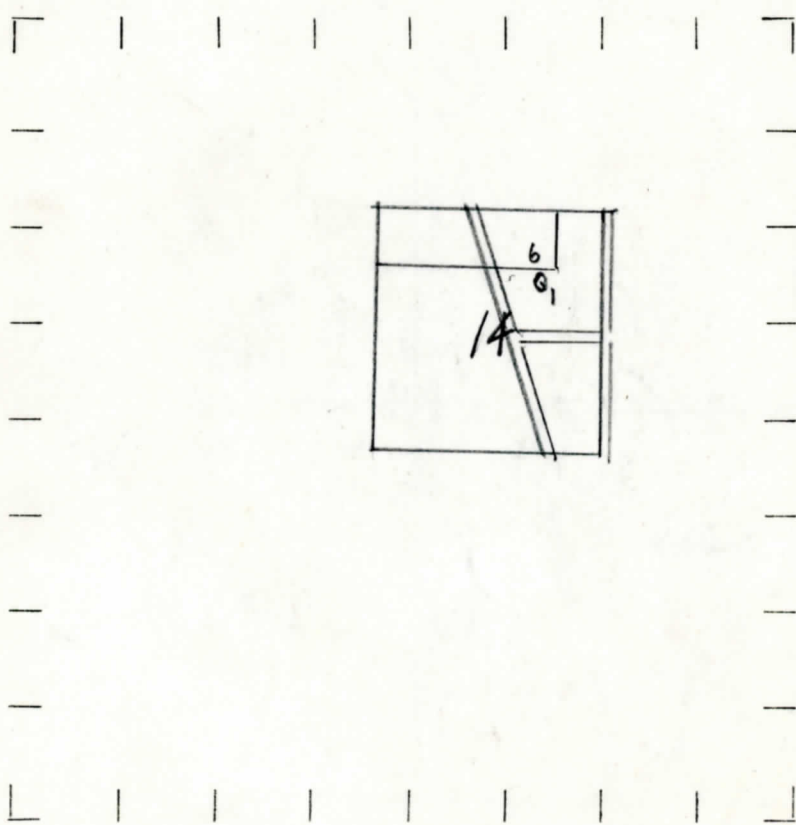
SIGNED _____

Superintendent or Foreman.

315 Feet from North Line of Farm
1625 " " East " " "
" " South " " "
" " West " " "
1635 Feet from North Line of Section
1625 " " East " " "
" " South " " "
" " West " " "

- LEGEND
- | | |
|------------------|----------------------|
| ○ LOCATION | ◆ DRY HOLE |
| ① RIG | ◆ DRY SHOWING OIL |
| ⊕ DRILLING | ⊕ DRY SHOWING GAS |
| ⊗ GAS WELL | ⊗ ABANDONED LOCATION |
| ● OIL WELL | ⊗ ABANDONED GAS WELL |
| ⊙ SMALL OIL WELL | ⊙ ABANDONED OIL WELL |

NOTE: Below make tracing from map, (when no map is obtainable make sketch) showing farm, center of section, this location with measurements and also wells, dry holes, or other locations in the vicinity of this location. Make copy to keep for reference and send original to Columbus office.



REMARKS: Corrected Location

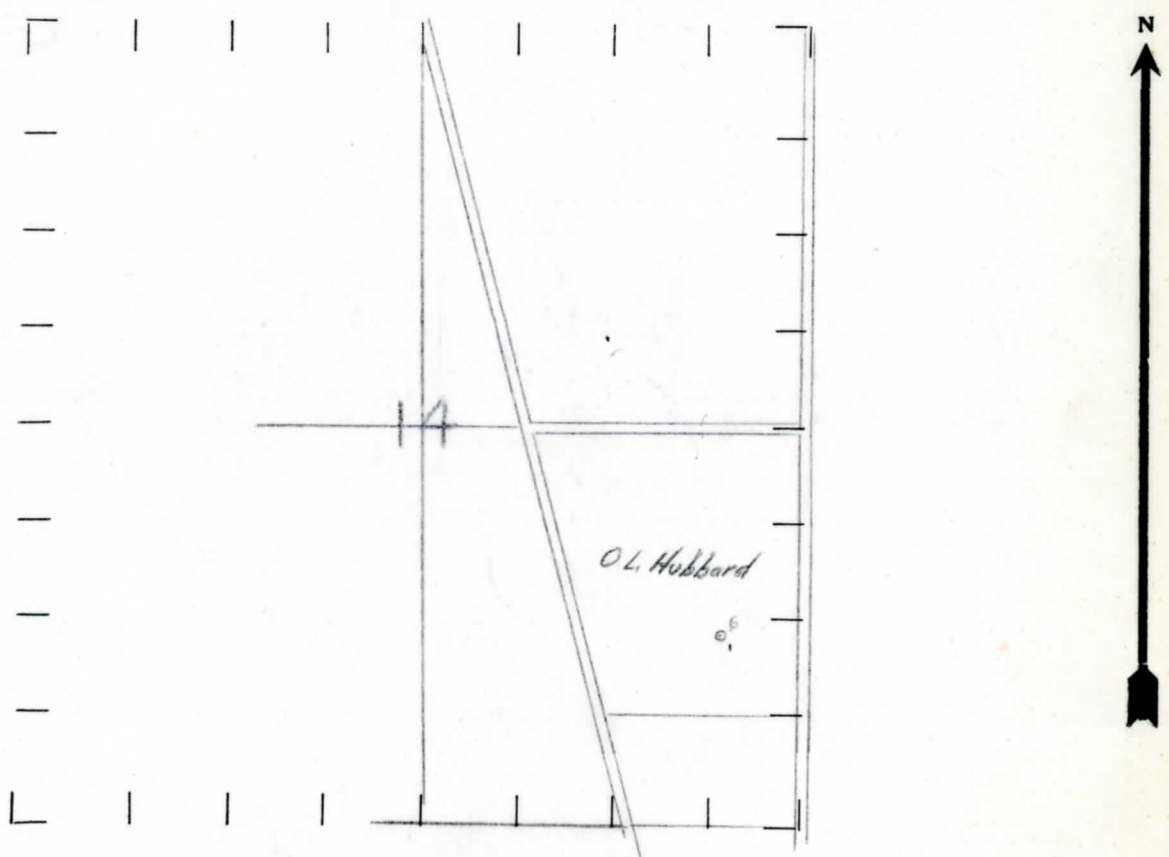
SIGNED J.H. Bell
Superintendent or Foreman.

STATE Michigan COUNTY Calhoun DIST. Marshall SEC. 14 TOWN 2 RANGE 3
WELL No. 1 (SERIAL No. 6) FARM O. L. Hubbard ACRES
NAME OF STREAM OR WATERS _____ QUADRANGLE SE - SE
OPERATOR St. Clair et al MAP Marshall Township, Calhoun County

Feet from North Line of Farm
530 " " East " " "
530 " " South " " "
" " West " " "
Feet from North Line of Section
530 " " East " " "
1300 " " South " " "
" " West " " "

- LEGEND**
- LOCATION
 - ① RIG
 - ⊕ DRILLING
 - ⊗ GAS WELL
 - OIL WELL
 - ⬮ SMALL OIL WELL
 - ⬮ DRY HOLE
 - ⬮ DRY SHOWING OIL
 - ⬮ DRY SHOWING GAS
 - ⬮ ABANDONED LOCATION
 - ⬮ ABANDONED GAS WELL
 - ⬮ ABANDONED OIL WELL

NOTE: Below make tracing from map, (when no map is obtainable make sketch) showing farm, center of section, this location with measurements and also wells, dry holes, or other locations in the vicinity of this location. Make copy to keep for reference and send original to Columbus office.



REMARKS:

SIGNED

Superintendent or Foreman.

OBSERVATION 24° 37' 34" N
NAME OF SURVEYOR OR MEASURER
WELL No. 1 (SERIAL No. 6) FARM
STATE Michigan COUNTY Calhoun DIST. Marshall TWP. SEC. 14 TOWN 25 RANGE 6 W
PREC. O. L. Hubbard

NAME OF STREAM OR WATERS
OPERATOR St. Clair et al
QUADRANGLE SE-SE
MAP Marshall Twp. Plat Book Sketch

Feet from North Line of Farm

530

" " East " " "

530

" " South " " "

" " West " " "

Feet from North Line of Section

530'

" " East " " "

1300'

" " South " " "

" " West " " "

LEGEND

○ LOCATION

① RIG

⊕ DRILLING

⊗ GAS WELL

● OIL WELL

⬮ SMALL OIL WELL

⬮ DRY HOLE

⬮ DRY SHOWING OIL

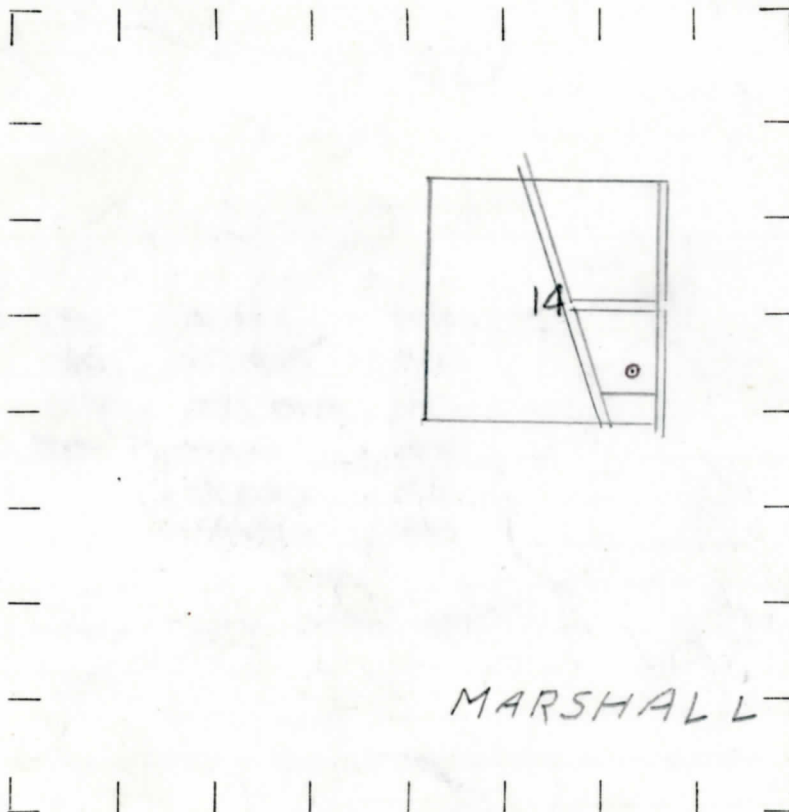
⬮ DRY SHOWING GAS

⬮ ABANDONED LOCATION

⬮ ABANDONED GAS WELL

⬮ ABANDONED OIL WELL

NOTE: Below make tracing from map, (when no map is obtainable make sketch) showing farm, center of section, this location with measurements and also wells, dry holes, or other locations in the vicinity of this location. Make copy to keep for reference and send original to Columbus office.



REMARKS:

SIGNED

G. H. Bell

Superintendent or Foreman.

DATE December 13th, 1930. **COMPLETION RECORD** No. - 6 -

STATE Michigan COUNTY Calhoun DIST. Marshall SEC. 14 TOWN 2 S RANGE 6 W

WELL No. 1 (SERIAL No. 6) FARM O.L. Hubbard ACRES

NAME OF STREAM OR WATERS QUADRANGLE SW - NE

OPERATOR St. Clair, et al MAP Marshall twp., Calhoun Co.

LOCATION REPORT SENT IN (DATE) January 10, 1930

WELL STARTED (DATE) January 1930 WELL COMPLETED (DATE) September 27, 1930.

☒ **DRY WELL**

☒ **PRODUCING**

☐ **DRY HOLE**

☒ **XXXXXXXXXXXX**

CROSS OUT THREE OF THE ABOVE
WELL RECORD

DATE OF SHOT	NUMBER OF QUARTS
1st 24 HOURS PRODUCTION <u>dry</u>	BARRELS OR FEET
2nd " " "	" " "
3rd " " "	" " "
4th " " "	" " "
5th " " "	" " "

SAND AND CASING

CASING SIZE	WEIGHT	CAS NG Feet Inches	SAND Name and Nature	TOP	BOTTOM	TOP PAY	BOTTOM PAY	SALT WATER
<u>14"</u>		<u>121</u>	<u>Berea</u>	<u>1315</u>				
<u>10"</u>		<u>408</u>	<u>Traverse</u>	<u>1620</u>				
<u>8 1/2"</u>		<u>1635</u>	<u>Bell shale</u>	<u>1800</u>				
<u>6 5/8"</u>		<u>3240</u>	<u>Monroe</u>	<u>1920</u>				
			<u>Sylvania</u>	<u>2320</u>				
			<u>Trenton</u>	<u>3935</u>				
			<u>Total depth</u>	<u>4571'</u>				
		<u>3935</u>						
		<u>955</u>						
		<u>2785</u>						

REMARKS Log attached

ST. CLAIR ET AL, Cont.
O.L. Hubbard #1, Our # 6,
Marshall Twp., Calhoun Co.

LIST OF MATERIAL CHARGEABLE TO WELL NO.

14" 121'
10" 408
8 1/4" 1635
6 5/8" 3240

Log by Poinsett

Mississippian

Coldwater:

Gray shale and some lime	120	1160
Gray shale	1160	1315
Red shale (Berea?)	1315	1335
Sunbury and Berea		
Dark brown and green shale	1335	1345
Dark brown and black shale	1345	1365
Dark brown and black shale	1365	1370

Mississippian and Devonian:

Bedford and Antrim

Dark brown to black and some green shale	1370	1570
Green limy shale	1570	1580
Brown shale	1580	1620

Traverse:

Dark gray limy shale	1620	1635
Gray lime	1635	1650
Gray to white and buff lime	1650	1655
Gray lime	1655	1675
Black limy shale	1675	1685
Gray and buff cherty lime	1685	1695
Gray shaly lime	1695	1710
Buff and gray cherty lime	1710	1715
Yellow granular lime	1715	1725
White to buff gray lime	1725	1750
Porous fossiliferous gray lime, granular	1750	1755
Gray to brown lime	1755	1785
Light and dark gray lime	1785	1800

Bell:

Gray shaly lime and gray shale, fossils	1800	1830
Gray and gray brown lime, buff	1830	1835
Gray and brown lime	1835	1880
Same	1880	1920

Upper Monroe:

Yellow buff dolomite and anhydrite	1920	1945
Buff lime	1945	1990
Yellow lime and anhydrite	1990	2030
Gray to buff dolomite	2030	2050
Buff dolomite	2050	2060
Gray buff dolomite and anhydrite	2060	2115
Buff dolomite	2115	2125
Buff dolomite, gray and cherty and anhydrite	2125	2140
Buff cherty dolomite, and anhydrite	2140	2160
Yellow buff dolomite	2160	2200
Gray buff dolomite	2200	2210
Yellow buff dolomite	2210	2215

Gray dolomite	2215	2225
Fine light gray dolomite	2225	2250
Dark gray dolomite and anhydrite	2250	2265
Buff to gray brown dolomite	2265	2305
Same	2305	2320

Silurian:

Sylvania:?

Blue gray cherty dolomite	2320	2340
Brown gray cherty and sandy dolomite	2340	2355
Brown dolomite- chert	2355	2380
White crystalline dolomite	2380	2395
White and gray dolomite	2395	2415
Buff gray dense dolomite	2415	2425
Gray and buff dolomite- blue gray	2425	2430
White, gray and buff dolomite	2430	2435

Silurian:

Lower Monroe:

r Monroe:		
Gray shaly dolomite	2475	2475
Same, with yellow brown dolomite	2475	2490
Light yellow brown and gray dolomite, some shaly dolomite	2490	2545
Gray shaly dolomite and gypsum	2545	2550
Gray shaly dolomite, white dolomite and gypsum	2550	2560
Gray brown dolomite	2560	2580
Yellow buff dolomite, some gray dolomite	2580	2600
Light gray dolomite, some brown	2600	2605
Dark gray dolomite	2605	2615
Same, with brown to buff dolomite	2615	2625
Light buff dolomite and gray dolomite	2625	2635
Light buff and gray dolomite, some shaly dolomite	2635	2960
Show of gas at 2965'		
Blue, white to blue gray crystalline dolomite	2960	3242
Light buff dolomite and gray shale	3242	3252

Lockport:

Port:		
Gray shale and gray dolomite	3252	3257
Gray lime, and argillaceous dolomite	3257	3265
Gray to buff lime and dolomite	3265	3277
Gray to brown and argillaceous dolomite		
gray dolomitic lime	3310	3330
Gray to light buff dolomitic lime	3330	3378
Purple red and white lime	3378	3393

Cataract:

act:		
Gray shale and argillaceous lime	3393	3400
Gray shale, and red and white lime, and red shale	3400	3408
Buff brown and gray argillaceous lime	3408	3415
Same	3415	3457
Gray argillaceous lime, some red purple shale, purple lime	3457	3487
Mottled gray argillaceous lime and shale	3487	3572
Same	3572	3602

Ordovician:

Utica:

Gray shale	3602	3933
------------	------	------

Trenton:

Brown lime	5935	4564
Brown lime	4564	4571

Total depth 4571'