



Western Michigan University
ScholarWorks at WMU

Legacy Scout Tickets from Pure Oil Company

8-20-2021

**MGRRE_PureOilScoutTickets_Bonnett,
Frederic_1_21025093820000**

MGRRE
Western Michigan University

Follow this and additional works at: <https://scholarworks.wmich.edu/pure>



Part of the Geology Commons

WMU ScholarWorks Citation

MGRRE, "MGRRE_PureOilScoutTickets_Bonnett, Frederic_1_21025093820000" (2021). *Legacy Scout Tickets from Pure Oil Company*. 10964.
<https://scholarworks.wmich.edu/pure/10964>

This Document is brought to you for free and open access via ScholarWorks at WMU. It has been accepted for inclusion in Legacy Scout Tickets from Pure Oil Company by an authorized administrator of ScholarWorks at WMU. See the National Digital Catalogue - Science Base Catalogue for more collections submitted by MGRRE.



MGRRE_PureOilScoutTickets_Bonnett, Frederic_1_21025093820000

API 21025093820000

Permit Number 9382

Lease Name Bonnett, Frederic

Well Number 1

County Calhoun

Township 02S

Range 06W

Section 8

2021 DEQ or Pure co_name Conoco, Incorporated

Pure Number 16

Latitude 42.30702

Longitude -85.03508

THE PURE OIL COMPANY

Serial No. 16¹⁶

LOCATION REPORT

A.F.E. No. _____

Date January 7, 1942Division Mich. Producing District _____ Lease _____Frederic Bennett
Frederic BonnettAcres _____ Lease No. _____ Elevation _____ Well No. 1'Quadrangle E 1/2 SE-SW Sec. 88 Twp. 25 Rge. 6 W Twp. MarshallSurvey _____ County Calhoun State MichiganOperator Continental Oil Co Map Marshall Township, Calhoun County

660 660 Feet North of South Line of Lease

" East " West " " "

" South " North " " "

440 440 " West " East " " "

660 660 Feet North of South Line of Section

" East " West " " "

" South " North " " "

440 440 " West " East " " "

LEGEND

○ Location

☀ Gas Well

● Oil Well

○ or ○ Dry Hole

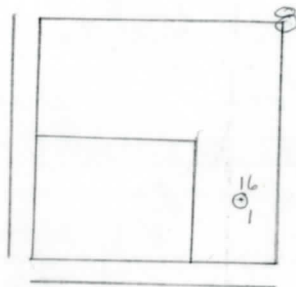
● or ● Dry Showing Oil

☀ Dry Showing Gas

○ Abandoned Location

☀ or ☀ Abandoned Gas Well

● or ● Abandoned Oil Well



N

Scale _____

Remarks: _____

Submitted by _____ Civil Engineer

Approved by _____ Division Manager

Approved by _____ Vice-President - General Manager

Date April 15, 1942 No. 16
 State Mich. County Calhoun ~~Dist.~~ Twp. Marshall Sec. 8 Twp. 2 S Rce. 6 W
 Well No. 1 (Serial No.) 16 Farm Frederic Bonnett Acres _____
 Operator Continental Oil Company Information secured from Scouting Department
 Date well started 1-23-42 Date well completed 4-10-42 Elevation 954.7

PRODUCTION RECORD

1st 24 hours natural Dry Hole
 2nd 24 hours natural _____
 Date of shot _____ No. of quarts _____ From _____ to _____ From _____ to _____
 Date of acid _____ No. of gallons _____
 1st 24 hours after acid shot _____
 2nd 24 hours after acid shot _____

FORMATION AND CASING RECORD

Formation	Top	Bottom	Top Pay	Bottom Pay	Remarks	Casing	
						Size	Set at
Marshall	120	310				13"	373
Coldw. Red Rock	1240	1260				8-1/4"	1569
Sunbury	1278					6-5/8"	4003 - R.H.
Antrim	1303	1554					
Traverse Lime	1640			1670	1 bailer salt water		per hour.
Monroe	1830		1865	1879	Salt water.		
			2210	2213	Est. 150,000 cu. ft. gas.		
Bass Island	2372	2804	2433	2441	H.F.B.S.W.		
			2642	2650	Small show oil.		
Niagaran	2897		2895	2897	Salt water.		
Trenton	3903						
Total Depth		4919					

Remarks 1640
-685-
3913
955
2948

Signed D. C. Shackelford