



Western Michigan University  
ScholarWorks at WMU

---

Legacy Scout Tickets from Pure Oil Company

---

8-20-2021

**MGRRE\_PureOilScoutTickets\_Platz, Herman\_1\_21025124430000**

MGRRE

*Western Michigan University*

Follow this and additional works at: <https://scholarworks.wmich.edu/pure>



Part of the Geology Commons

---

#### WMU ScholarWorks Citation

MGRRE, "MGRRE\_PureOilScoutTickets\_Platz, Herman\_1\_21025124430000" (2021). *Legacy Scout Tickets from Pure Oil Company*. 10979.

<https://scholarworks.wmich.edu/pure/10979>

This Document is brought to you for free and open access via ScholarWorks at WMU. It has been accepted for inclusion in Legacy Scout Tickets from Pure Oil Company by an authorized administrator of ScholarWorks at WMU. See the National Digital Catalogue - Science Base Catalogue for more collections submitted by MGRRE.



---

**MGRRE\_PureOilScoutTickets\_Platz, Herman\_1\_21025124430000**

API 21025124430000

Permit Number 12443

Lease Name Platz, Herman

Well Number 1

County Calhoun

Township 04S

Range 07W

Section 2

2021 DEQ or Pure co\_name Perry, Clifford A.

Pure Number 31

Latitude 42.15033

Longitude -85.08851

THE PURE OIL COMPANY

Date July 10, 1946 LOCATION REPORT A.F.E. No. \_\_\_\_\_

Division Mich. Producing District \_\_\_\_\_ Lease Herman Platz

Acres \_\_\_\_\_ Lease No. \_\_\_\_\_ Elevation \_\_\_\_\_ Well No. 1 (Serial No. 31)

Quadrangle SW NW SE Sec. 2 Twp. 4 S Rge. 7 W Twp. Burlington

Survey \_\_\_\_\_ County Calhoun State Michigan

Operator Clifford A. Perry Map Burlington Twp - Calhoun Co

1402 Feet from North Line of Lease

" " East " " "

330 330 " " South " " "

990 990 " " West " " "

Feet from North Line of Section

" " East " " "

" " South " " "

330 330 " " West " " "

LEGEND

○ Location

☼ Gas Well

● Oil Well

☼ Gas - Distillate Well

○ or ○ Dry Hole

● Dry Showing Oil

☼ Dry Showing Gas

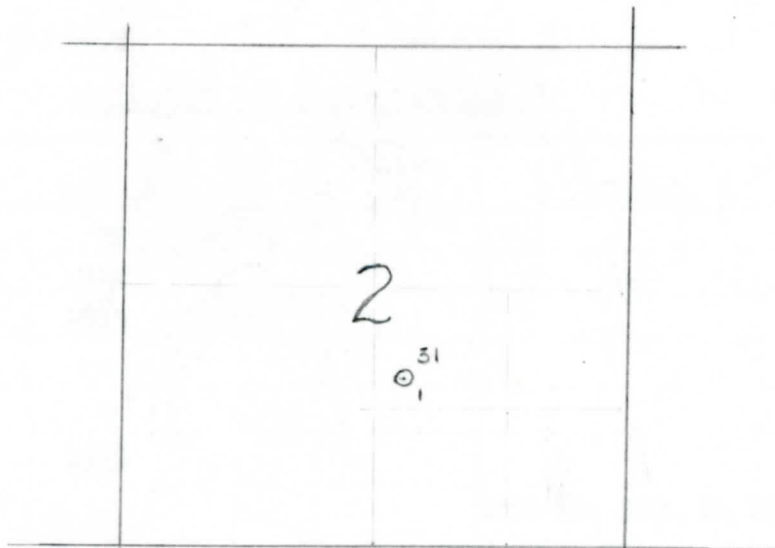
⊗ Abandoned Location

☼ or ☼ Abandoned Gas Well

● or ● Abandoned Oil Well

⊗ or ⊗ Input Well

N



Remarks: No Map Scale \_\_\_\_\_

Submitted by \_\_\_\_\_ Civil Engineer Approved by \_\_\_\_\_ Division Manager

Approved by \_\_\_\_\_ Vice-President - General Manager

Date July 31, 1946 No. 31  
 State Mich. Co. Calhoun Twp. Burlington Sec. 2 Twp. 4 S Rge. 7 W  
 Well No. 1 Serial No. 31 Farm Herman Platz Acres \_\_\_\_\_  
 Operator Clifford A. Perry  
 Date started 7-3-46 Date completed 7-26-46 Elevation 934.1

PRODUCTION RECORD

1st 24 hours natural \_\_\_\_\_  
 Date of shot \_\_\_\_\_ No. of quarts \_\_\_\_\_ From \_\_\_\_\_ To \_\_\_\_\_  
 Date of acid \_\_\_\_\_ No. of gallons \_\_\_\_\_  
 1st 24 hours after acid \_\_\_\_\_  
 Completed as: Oil Well \_\_\_\_\_ Gas Well \_\_\_\_\_ Dry Hole X

FORMATION AND CASING RECORD

Formation	Top	Bottom	Top Pay	Bottom Pay	Remarks	Casing	
						Size	Set at
Coldwater Lime	68	75	(+866)			8-5/8"	42
" "	220	228				6-5/8"	200
Coldw. Red Rock	1023	1033	(-89)				
Sunbury	1040	(-106)					
Berea	1054	(-120)					
Antrim	1097	1323	(-163)				
Traverse Lime	1327	(-393)			1300 ft. S.W. in 12		
"	1323	(-389)			hrs. 1387-1399.	(-453)	
Dundee ?	1508	(-574)					
Total Depth		1800	(-866)				

Remarks \_\_\_\_\_

Signed D. C. Shackelford