



Western Michigan University  
ScholarWorks at WMU

---

Legacy Scout Tickets from Pure Oil Company

---

8-20-2021

**MGRRE\_PureOilScoutTickets\_Norton\_1\_21027000620000**

MGRRE

*Western Michigan University*

Follow this and additional works at: <https://scholarworks.wmich.edu/pure>



Part of the Geology Commons

---

#### WMU ScholarWorks Citation

MGRRE, "MGRRE\_PureOilScoutTickets\_Norton\_1\_21027000620000" (2021). *Legacy Scout Tickets from Pure Oil Company*. 10989.

<https://scholarworks.wmich.edu/pure/10989>

This Document is brought to you for free and open access via ScholarWorks at WMU. It has been accepted for inclusion in Legacy Scout Tickets from Pure Oil Company by an authorized administrator of ScholarWorks at WMU. See the National Digital Catalogue - Science Base Catalogue for more collections submitted by MGRRE.



---

## MGRRE\_PureOilScoutTickets\_Norton\_1\_21027000620000

API 21027000620000

Permit Number 62

Lease Name Norton

Well Number 1

County Cass

Township 05S

Range 15W

Section 2

2021 DEQ or Pure co\_name Kersey, R. H. and Baker, J. R.

Pure Number 3

Latitude 42.06689

Longitude -86.01983

THE PURE OIL COMPANY

Form 24 5M 9-27-27 P100  
DATE June 2nd 1928

LOCATION REPORT

No. 3

STATE Michigan COUNTY Cass

DIST. Wayne SEC. 2  
TWP. 15N PREC. 15W

TOWN 55 RANGE 15W

WELL No. 1 (SERIAL No. 3) FARM Rich Norton ACRES

NAME OF STREAM OR WATERS QUADRANGLE

OPERATOR Reed-Springsteen MAP 4 inches = 1 mile

Feet from North Line of Farm

" " East " " "

1200 " " South " " "

300 " " West " " "

Feet from North Line of Section

" " East " " "

" " South " " "

" " West " " "

LEGEND

O LOCATION

① RIG

⊕ DRILLING

⊗ GAS WELL

● OIL WELL

⬮ SMALL OIL WELL

⬮ DRY HOLE

⬮ DRY SHOWING OIL

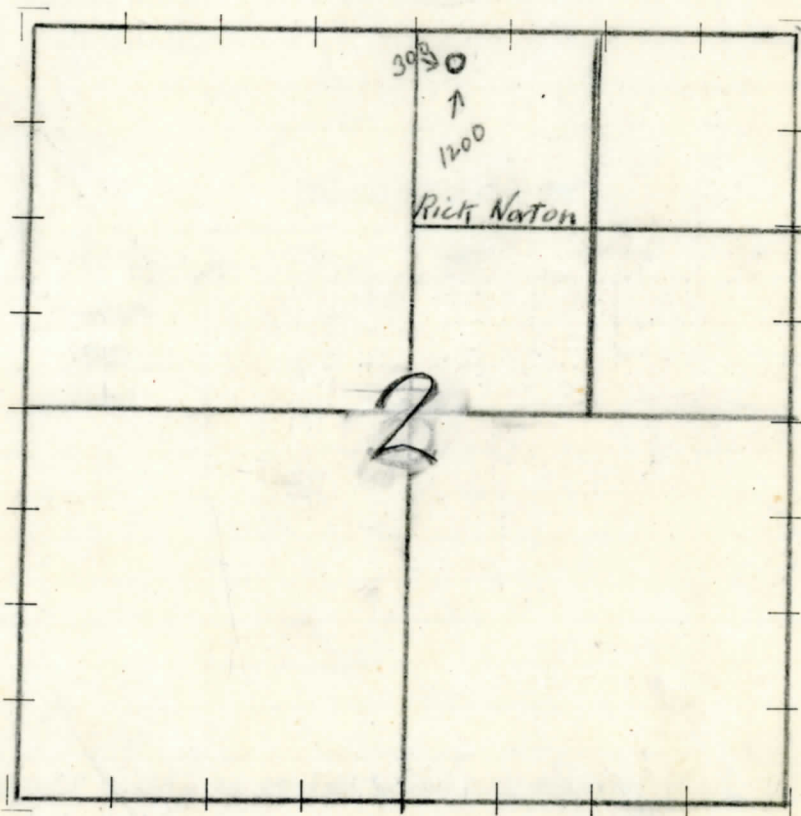
⬮ DRY SHOWING GAS

⬮ ABANDONED LOCATION

⬮ ABANDONED GAS WELL

⬮ ABANDONED OIL WELL

NOTE: Below make tracing from map (when no map is obtainable make sketch), showing farm, center of section, this location with measurements and also wells, dry holes, or other locations in the vicinity of this location. Make copy to keep for reference and send original to Columbus office.



N



REMARKS:

SIGNED

Superintendent or Foreman

*Handwritten signature: Hall-oks  
Trip map etc*



SIGNED \_\_\_\_\_ Supt. or Foreman

DESCRIPTION	QUANTITY	MAKE	SIZE	MATERIAL
				Rig—Rig Irons
				Tanks

Cass County, Wayne Twp.

Our # 3.

Drift	0	182
Shale	182	390
Red rock	390	397
Berea	397	401
Gray shale	401	725
Brown shale	725	919
Gray shale	919	922
Traverse	922	1235
Show oil	938	948
Shale	1235	1239
Dundee	1239	1665
Show oil	1239	
Gas	1565	
Niagra lime	1622	1788
Gas	1768	

T.D. 1788'