



Western Michigan University
ScholarWorks at WMU

Legacy Scout Tickets from Pure Oil Company

8-20-2021

MGRRE_PureOilScoutTickets_Knowlton_1_21027005790000

MGRRE

Western Michigan University

Follow this and additional works at: <https://scholarworks.wmich.edu/pure>



Part of the Geology Commons

WMU ScholarWorks Citation

MGRRE, "MGRRE_PureOilScoutTickets_Knowlton_1_21027005790000" (2021). *Legacy Scout Tickets from Pure Oil Company*. 10990.

<https://scholarworks.wmich.edu/pure/10990>

This Document is brought to you for free and open access via ScholarWorks at WMU. It has been accepted for inclusion in Legacy Scout Tickets from Pure Oil Company by an authorized administrator of ScholarWorks at WMU. See the National Digital Catalogue - Science Base Catalogue for more collections submitted by MGRRE.



MGRRE_PureOilScoutTickets_Knowlton_1_21027005790000

API 21027005790000

Permit Number 579

Lease Name Knowlton

Well Number 1

County Cass

Township 08S

Range 16W

Section 2

2021 DEQ or Pure co_name Blair and Miller

Pure Number 4

Latitude 41.79739

Longitude -86.14316

THE PURE OIL COMPANY

DATE 6-8-29

LOCATION REPORT

No. 4

STATE Michigan COUNTY Cass DIST. Milton SEC. 2 TOWN 8 S RANGE 16 W
WELL No. 1 (SERIAL No. 4) FARM Chas. Knoulton ACRES SW₁ - SW₁
NAME OF STREAM OR WATERS _____ QUADRANGLE Cass Co. Milton Twp.
OPERATOR Blair & Miller MAP _____

Feet from North Line of Farm

220

" " East " " "

200

" " South " " "

" " West " " "

Feet from North Line of Section

200

" " East " " "

" " South " " "

1120

" " West " " "

LEGEND

○ LOCATION

① RIG

⊕ DRILLING

⊗ GAS WELL

● OIL WELL

⬮ SMALL OIL WELL

✦ DRY HOLE

✦ DRY SHOWING OIL

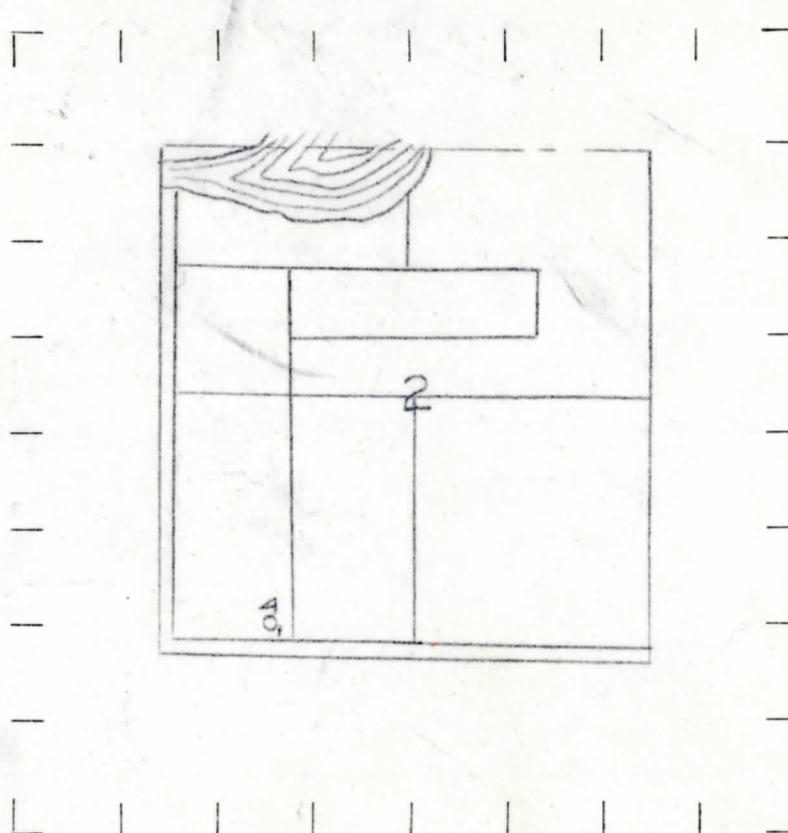
✦ DRY SHOWING GAS

⊗ ABANDONED LOCATION

⊗ ABANDONED GAS WELL

⬮ ABANDONED OIL WELL

NOTE: Below make tracing from map, (when no map is obtainable make sketch) showing farm, center of section, this location with measurements and also wells, dry holes, or other locations in the vicinity of this location. Make copy to keep for reference and send original to Columbus office.



REMARKS:

SIGNED

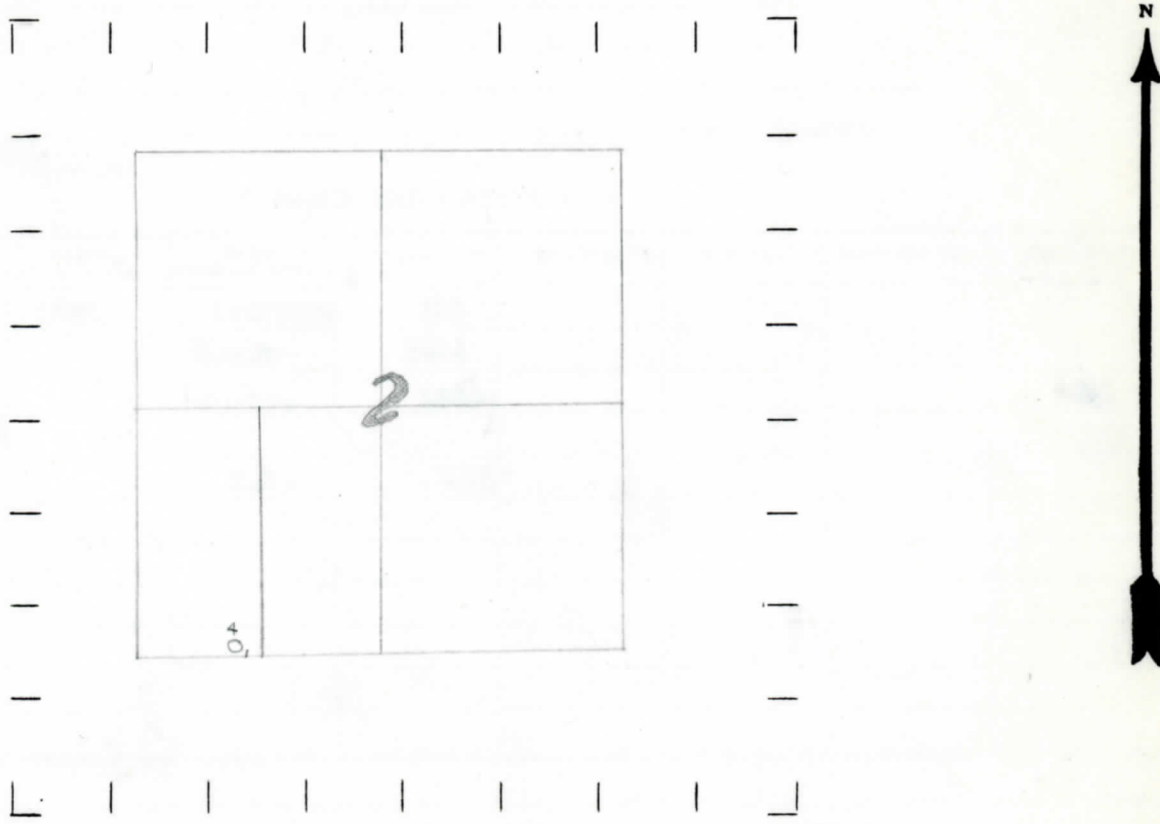
Superintendent or Foreman.

STATE Michigan COUNTY Cass DIST. Milton SEC. 2 TOWN 8S RANGE 16W
WELL No. 1 (SERIAL No. 4) FARM Chas Knaulton ACRES
NAME OF STREAM OR WATERS _____ QUADRANGLE SW-SW
OPERATOR Blair & Miller MAP Cass Co, Milton Twp

Feet from North Line of Farm
220 " " East " " "
200 " " South " " "
" " West " " "
Feet from North Line of Section
200 " " East " " "
1120 " " South " " "
" " West " " "

- LEGEND**
- | | |
|------------------|----------------------|
| ○ LOCATION | ⊕ DRY HOLE |
| ① RIG | ⬮ DRY SHOWING OIL |
| ⊕ DRILLING | ⊕ DRY SHOWING GAS |
| ⊗ GAS WELL | ⊗ ABANDONED LOCATION |
| ● OIL WELL | ⊗ ABANDONED GAS WELL |
| ⬮ SMALL OIL WELL | ● ABANDONED OIL WELL |

NOTE: Below make tracing from map, (when no map is obtainable make sketch) showing farm, center of section, this location with measurements and also wells, dry holes, or other locations in the vicinity of this location. Make copy to keep for reference and send original to Columbus office.



REMARKS:

SIGNED W.B. Bell
Superintendent or Foreman.

