



Western Michigan University
ScholarWorks at WMU

Legacy Scout Tickets from Pure Oil Company

8-20-2021

MGRRE_PureOilScoutTickets_Clute, C._1_21027005700000

MGRRE

Western Michigan University

Follow this and additional works at: <https://scholarworks.wmich.edu/pure>



Part of the Geology Commons

WMU ScholarWorks Citation

MGRRE, "MGRRE_PureOilScoutTickets_Clute, C._1_21027005700000" (2021). *Legacy Scout Tickets from Pure Oil Company*. 10991.

<https://scholarworks.wmich.edu/pure/10991>

This Document is brought to you for free and open access via ScholarWorks at WMU. It has been accepted for inclusion in Legacy Scout Tickets from Pure Oil Company by an authorized administrator of ScholarWorks at WMU. See the National Digital Catalogue - Science Base Catalogue for more collections submitted by MGRRE.



MGRRE_PureOilScoutTickets_Clute, C._1_21027005700000

API 21027005700000

Permit Number 570

Lease Name Clute, C.

Well Number 1

County Cass

Township 07S

Range 13W

Section 2

2021 DEQ or Pure co_name Daniels, C. A.

Pure Number 5

Latitude 41.89611

Longitude -85.78846

THE PURE OIL COMPANY

DATE 6-8-29

LOCATION REPORT

No. 5STATE Michigan COUNTY Cass DIST. Porter SEC. 2 TOWN 7 S RANGE 13 WWELL No. 1 (SERIAL No. 5) FARM Chas. Clute ACRESNAME OF STREAM OR WATERS QUADRANGLE NW $\frac{1}{4}$ - NE $\frac{1}{4}$ OPERATOR C. A. DANIELS MAP Cass Co. Porter Twp.220 Feet from North Line of Farm

" " East " " "

" " South " " "

320 " " West " " "220 Feet from North Line of Section2320 " " East " " "

" " South " " "

" " West " " "

LEGEND

O LOCATION

① RIG

⊕ DRILLING

⊗ GAS WELL

● OIL WELL

⦿ SMALL OIL WELL

⦿ DRY HOLE

⦿ DRY SHOWING OIL

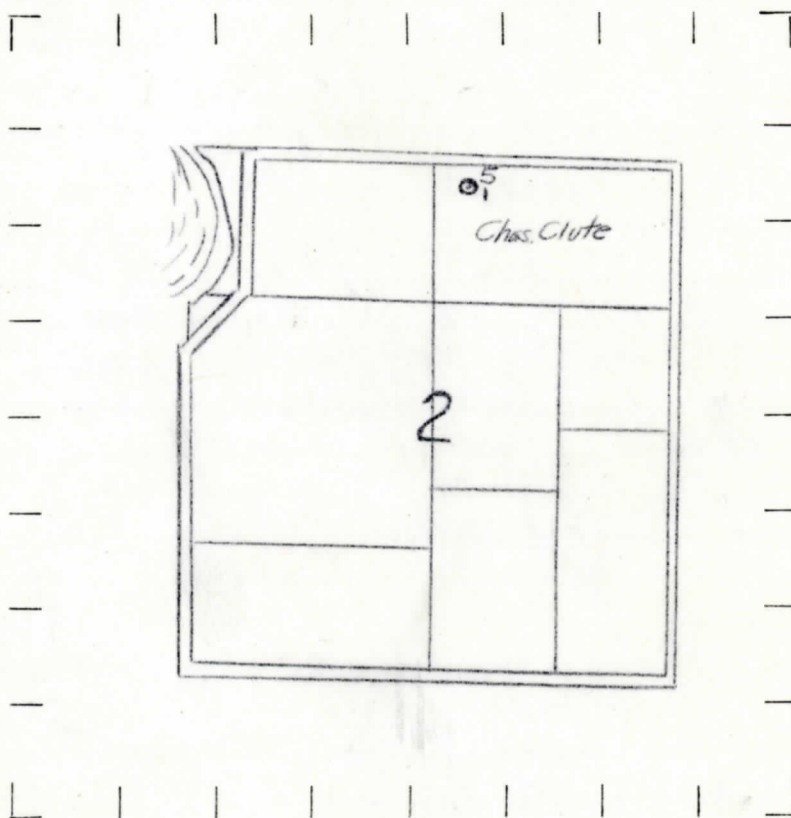
⦿ DRY SHOWING GAS

⦿ ABANDONED LOCATION

⦿ ABANDONED GAS WELL

⦿ ABANDONED OIL WELL

NOTE: Below make tracing from map, (when no map is obtainable make sketch) showing farm, center of section, this location with measurements and also wells, dry holes, or other locations in the vicinity of this location. Make copy to keep for reference and send original to Columbus office.



REMARKS:

SIGNED

Superintendent or Foreman.

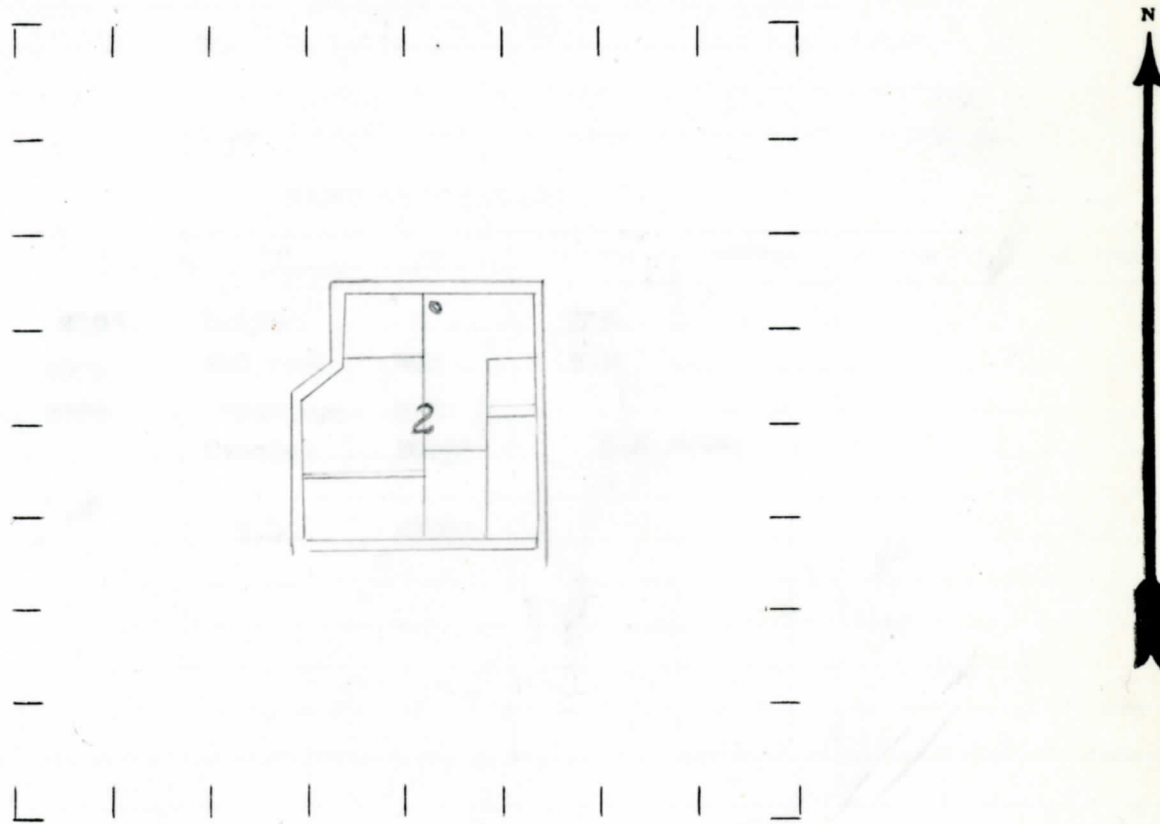
Top Map Office

WELL No. 1 (SERIAL No. 5) FARM _____ ACRES _____
NAME OF STREAM OR WATERS _____ QUADRANGLE NW-NE
OPERATOR C.A. Daniels MAP Cass Co. Porter Twp

220 Feet from North Line of Farm
" " East " " "
" " South " " "
320 " " West " " "
Feet from North Line of Section
" " East " " "
" " South " " "
" " West " " "

- LEGEND**
- | | |
|------------------|----------------------|
| ○ LOCATION | ⊕ DRY HOLE |
| ① RIG | ⊕ DRY SHOWING OIL |
| ⊕ DRILLING | ⊕ DRY SHOWING GAS |
| ⊕ GAS WELL | ⊕ ABANDONED LOCATION |
| ● OIL WELL | ⊕ ABANDONED GAS WELL |
| ⊕ SMALL OIL WELL | ⊕ ABANDONED OIL WELL |

NOTE: Below make tracing from map, (when no map is obtainable make sketch) showing farm, center of section, this location with measurements and also wells, dry holes, or other locations in the vicinity of this location. Make copy to keep for reference and send original to Columbus office.



REMARKS:

SIGNED G.H. Bell
Superintendent or Foreman.

