



Western Michigan University  
ScholarWorks at WMU

---

Legacy Scout Tickets from Pure Oil Company

---

8-20-2021

## MGRRE\_PureOilScoutTickets\_W. Wright 1\_1\_na

MGRRE

*Western Michigan University*

Follow this and additional works at: <https://scholarworks.wmich.edu/pure>



Part of the Geology Commons

---

### WMU ScholarWorks Citation

MGRRE, "MGRRE\_PureOilScoutTickets\_W. Wright 1\_1\_na" (2021). *Legacy Scout Tickets from Pure Oil Company*. 10992.

<https://scholarworks.wmich.edu/pure/10992>

This Document is brought to you for free and open access via ScholarWorks at WMU. It has been accepted for inclusion in Legacy Scout Tickets from Pure Oil Company by an authorized administrator of ScholarWorks at WMU. See the National Digital Catalogue - Science Base Catalogue for more collections submitted by MGRRE.



---

## MGRRE\_PureOilScoutTickets\_W. Wright 1\_1\_na

API na

Permit Number na

Lease Name W. Wright 1

Well Number 1

County Cass

Township 5S

Range 15W

Section 18

2021 DEQ or Pure co\_name J D McClaren

Pure Number 6

Latitude 42.0344098

Longitude -86.098159

THE PURE OIL COMPANY

DATE Nov. 1st, 1929

## LOCATION REPORT

No. 6

STATE Michigan COUNTY Cass DIST. Wayne SEC. 18 TOWN 5S RANGE 15W  
 WELL No. 1 (SERIAL No. 6) FARM \_\_\_\_\_ ACRES \_\_\_\_\_  
 NAME OF STREAM OR WATERS \_\_\_\_\_ QUADRANGLE SE - SE

OPERATOR J. D. McClaren MAP Wayne Township, Cass County

Feet from North Line of Farm

\_\_\_\_\_ " " East " " "  
330 " " South " " "  
250 " " West " " "

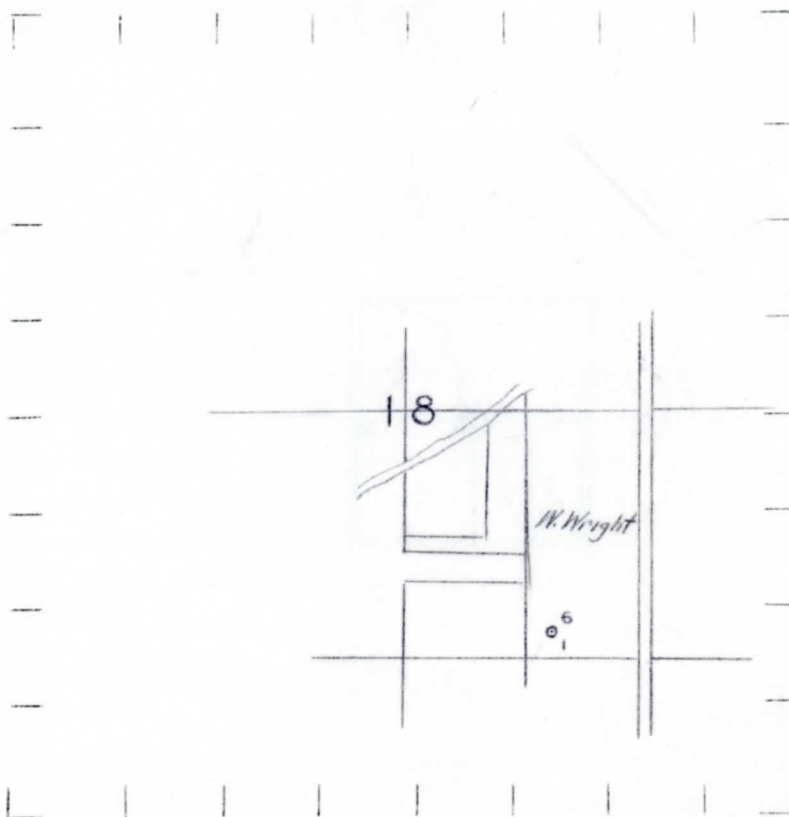
Feet from North Line of Section

940 1070' " " East " " "  
330 " " South " " "  
 \_\_\_\_\_ " " West " " "

## LEGEND

- |                  |                      |
|------------------|----------------------|
| ○ LOCATION       | ◆ DRY HOLE           |
| ⊙ RIG            | ◆ DRY SHOWING OIL    |
| ⊕ DRILLING       | ⊙ DRY SHOWING GAS    |
| ⊗ GAS WELL       | ⊗ ABANDONED LOCATION |
| ● OIL WELL       | ⊗ ABANDONED GAS WELL |
| ⊙ SMALL OIL WELL | ⊗ ABANDONED OIL WELL |

NOTE: Below make tracing from map, (when no map is obtainable make sketch) showing farm, center of section, this location with measurements and also wells, dry holes, or other locations in the vicinity of this location. Make copy to keep for reference and send original to Columbus office.



REMARKS:

SIGNED

Superintendent or Foreman.

DATE 10/30-29  
 STATE Michigan COUNTY Cass DIST. Wayne SEC. 18 TOWN 5S RANGE 15W  
 WELL No. 1 (SERIAL No. 6) FARM W. Wright ACRES  
 NAME OF STREAM OR WATERS \_\_\_\_\_ QUADRANGLE SE-SE  
 OPERATOR J. D. McClaren MAP Cass Co. - Plat Book

Feet from North Line of Farm

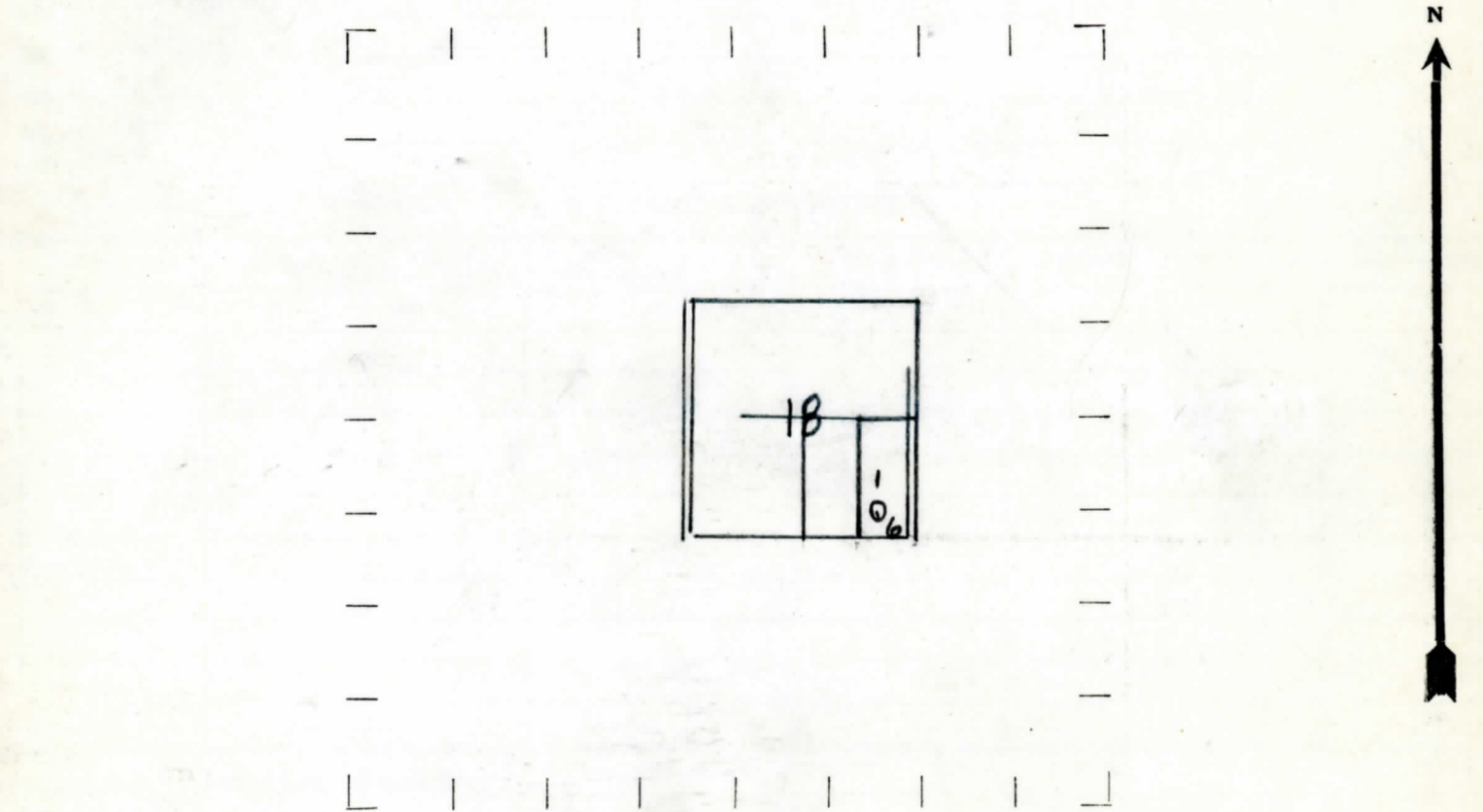
" " East " " "  
330  
 " " South " " "  
250  
 " " West " " "

Feet from North Line of Section

" " East " " "  
990'  
 " " South " " "  
330'  
 " " West " " "

- LEGEND**
- O LOCATION
  - ⊙ RIG
  - ⊕ DRILLING
  - ⊗ GAS WELL
  - OIL WELL
  - ⬮ SMALL OIL WELL
  - ⬮ DRY HOLE
  - ⬮ DRY SHOWING OIL
  - ⬮ DRY SHOWING GAS
  - ⬮ ABANDONED LOCATION
  - ⬮ ABANDONED GAS WELL
  - ⬮ ABANDONED OIL WELL

NOTE: Below make tracing from map, (when no map is obtainable make sketch) showing farm, center of section, this location with measurements and also wells, dry holes, or other locations in the vicinity of this location. Make copy to keep for reference and send original to Columbus office.



REMARKS:

SIGNED J. D. McClaren  
 Superintendent or Foreman.

