



Western Michigan University
ScholarWorks at WMU

Legacy Scout Tickets from Pure Oil Company

8-20-2021

MGRRE_PureOilScoutTickets_Stutsman_1_21027008200000

MGRRE

Western Michigan University

Follow this and additional works at: <https://scholarworks.wmich.edu/pure>



Part of the Geology Commons

WMU ScholarWorks Citation

MGRRE, "MGRRE_PureOilScoutTickets_Stutsman_1_21027008200000" (2021). *Legacy Scout Tickets from Pure Oil Company*. 10993.

<https://scholarworks.wmich.edu/pure/10993>

This Document is brought to you for free and open access via ScholarWorks at WMU. It has been accepted for inclusion in Legacy Scout Tickets from Pure Oil Company by an authorized administrator of ScholarWorks at WMU. See the National Digital Catalogue - Science Base Catalogue for more collections submitted by MGRRE.



MGRRE_PureOilScoutTickets_Stutsman_1_21027008200000

API 21027008200000

Permit Number 820

Lease Name Stutsman

Well Number 1

County Cass

Township 07S

Range 13W

Section 32

2021 DEQ or Pure co_name Blair and Miller

Pure Number 7

Latitude 41.82344

Longitude -85.85134

THE PURE OIL COMPANY

LOCATION REPORT

No. 7

DATE Nov. 1st, 1929

STATE Michigan COUNTY Cass DIST. Porter SEC. 32 TOWN 7 S RANGE 13W
 WELL No. 1 (SERIAL No. 7) FARM Charles Stutsman ACRES

NAME OF STREAM OR WATERS _____ QUADRANGLE NE - NW
 OPERATOR Blair & Miller MAP Porter Township, Cass County

185 Feet from North Line of Farm

_____ " " East " " "

_____ " " South " " "

1550 " " West " " "

185 Feet from North Line of Section

1550 " " ~~East~~ West " " "

_____ " " South " " "

_____ " " West " " "

LEGEND

O LOCATION

① RIG

⊕ DRILLING

⊗ GAS WELL

● OIL WELL

⬮ SMALL OIL WELL

⬮ DRY HOLE

⬮ DRY SHOWING OIL

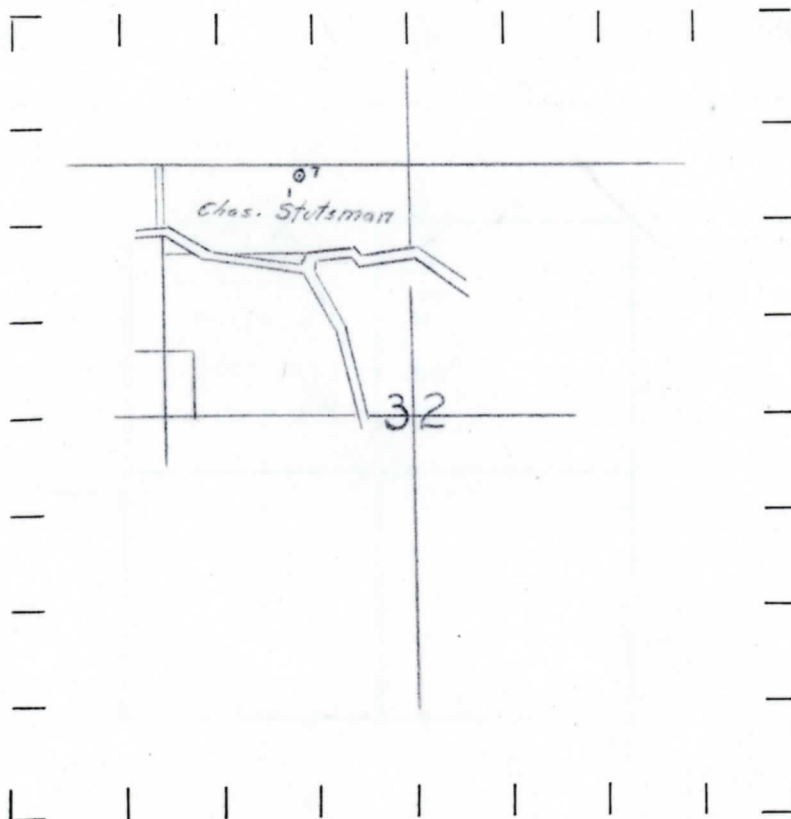
⬮ DRY SHOWING GAS

⬮ ABANDONED LOCATION

⬮ ABANDONED GAS WELL

⬮ ABANDONED OIL WELL

NOTE: Below make tracing from map, (when no map is obtainable make sketch) showing farm, center of section, this location with measurements and also wells, dry holes, or other locations in the vicinity of this location. Make copy to keep for reference and send original to Columbus office.



REMARKS:

SIGNED

Superintendent or Foreman.

STATE Michigan COUNTY Cass DIST. Porter SEC. 32 TOWN 7S RANGE 13W
 WELL No. 1 (SERIAL No. 7) FARM Chas Stutsman ACRES

NAME OF STREAM OR WATERS QUADRANGLE NE-NW
 OPERATOR Blair & Miller MAP Cass Co. Porter Twp

185 Feet from North Line of Farm

" " East " " "

" " South " " "

1550 " " West " " "

185 Feet from North Line of Section

1550 " " West " " "

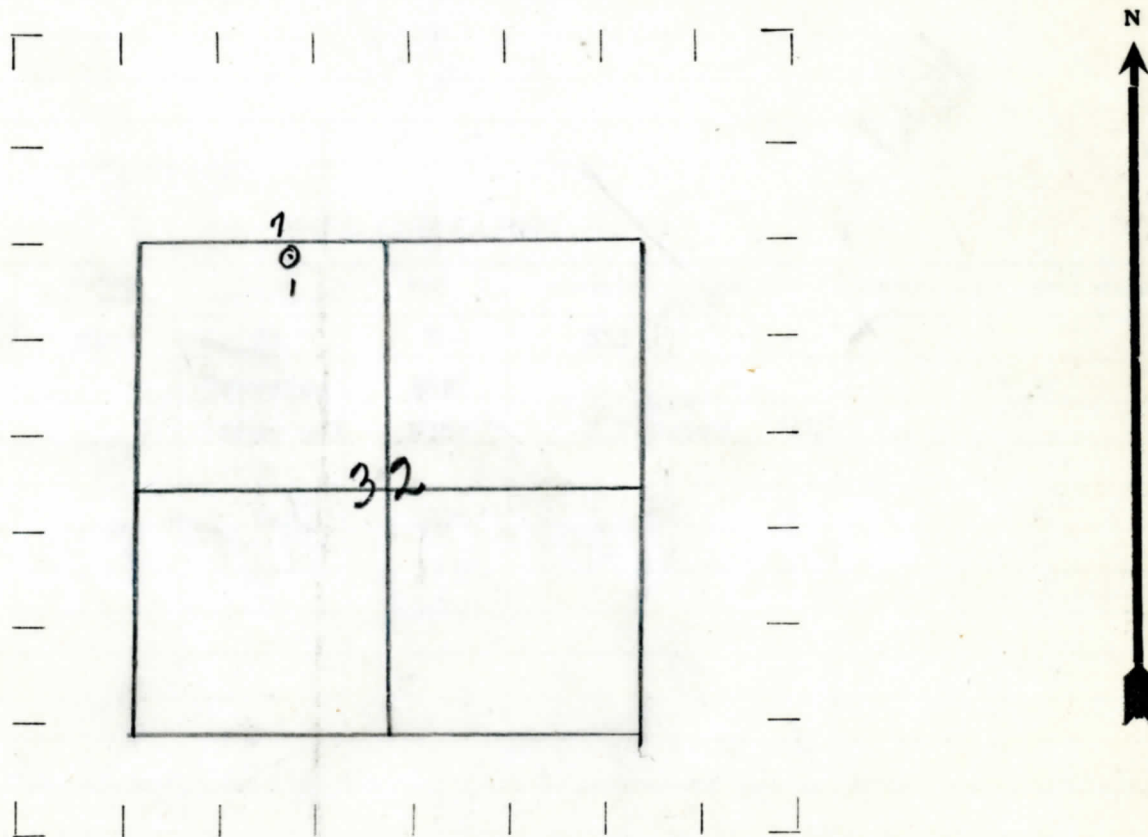
" " South " " "

" " West " " "

LEGEND

- | | |
|------------------|----------------------|
| ○ LOCATION | ✦ DRY HOLE |
| ① RIG | ✦ DRY SHOWING OIL |
| ⊕ DRILLING | ✦ DRY SHOWING GAS |
| ⊗ GAS WELL | ✦ ABANDONED LOCATION |
| ● OIL WELL | ✦ ABANDONED GAS WELL |
| ⬮ SMALL OIL WELL | ✦ ABANDONED OIL WELL |

NOTE: Below make tracing from map, (when no map is obtainable make sketch) showing farm, center of section, this location with measurements and also wells, dry holes, or other locations in the vicinity of this location. Make copy to keep for reference and send original to Columbus office.



REMARKS:

SIGNED

J.H. Bell

Superintendent or Foreman.

