



Western Michigan University  
ScholarWorks at WMU

---

Legacy Scout Tickets from Pure Oil Company

---

8-20-2021

**MGRRE\_PureOilScoutTickets\_Wright\_1\_21027008290000**

MGRRE

*Western Michigan University*

Follow this and additional works at: <https://scholarworks.wmich.edu/pure>



Part of the Geology Commons

---

#### WMU ScholarWorks Citation

MGRRE, "MGRRE\_PureOilScoutTickets\_Wright\_1\_21027008290000" (2021). *Legacy Scout Tickets from Pure Oil Company*. 10994.

<https://scholarworks.wmich.edu/pure/10994>

This Document is brought to you for free and open access via ScholarWorks at WMU. It has been accepted for inclusion in Legacy Scout Tickets from Pure Oil Company by an authorized administrator of ScholarWorks at WMU. See the National Digital Catalogue - Science Base Catalogue for more collections submitted by MGRRE.



---

## MGRRE\_PureOilScoutTickets\_Wright\_1\_21027008290000

API 21027008290000

Permit Number 829

Lease Name Wright

Well Number 1

County Cass

Township 05S

Range 14W

Section 18

2021 DEQ or Pure co\_name MClaren, Walter

Pure Number 8

Latitude 42.02979

Longitude -85.97463

THE PURE OIL COMPANY

DATE Nov. 8, 1929

LOCATION REPORT

No. 8STATE Michigan COUNTY Cass DIST. Violinia SEC. 18 TOWN. 5 S RANGE 14 WWELL No. 1 (SERIAL No. 8) FARM W. Wright ACRESNAME OF STREAM OR WATERS QUADRANGLE SE - SEOPERATOR J. D. Maclaren MAP Violinia Township, Cass County

Feet from North Line of Farm

300 " " East " " "900 " " South " " "

" " West " " "

Feet from North Line of Section

300 " " East " " "900 " " South " " "

" " West " " "

**LEGEND**

O LOCATION

① RIG

⊕ DRILLING

⊙ GAS WELL

● OIL WELL

⦿ SMALL OIL WELL

⦿ DRY HOLE

⦿ DRY SHOWING OIL

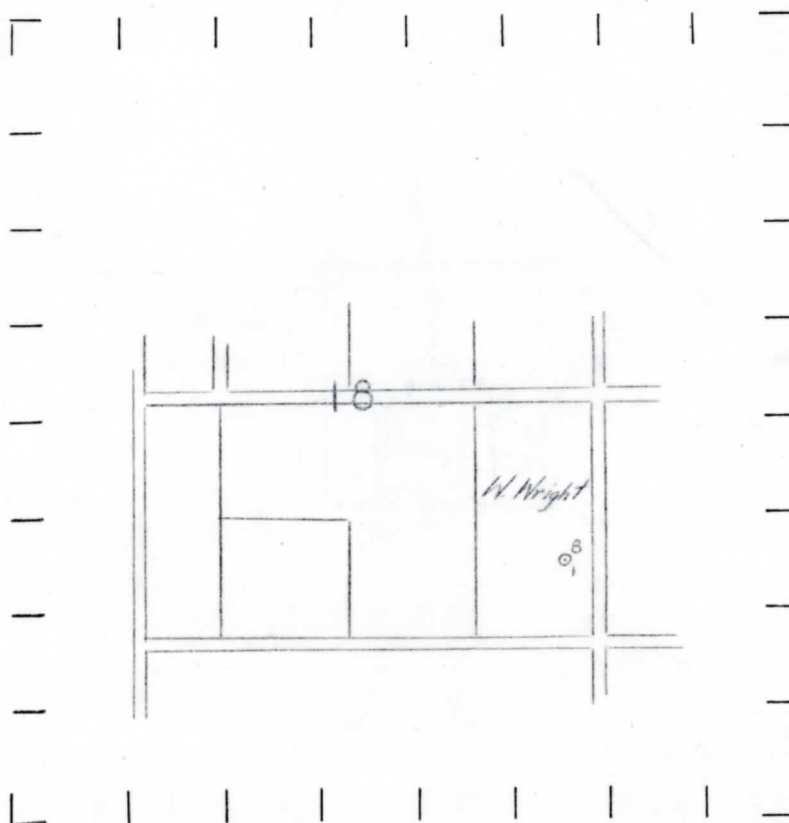
⦿ DRY SHOWING GAS

⦿ ABANDONED LOCATION

⦿ ABANDONED GAS WELL

⦿ ABANDONED OIL WELL

NOTE: Below make tracing from map, (when no map is obtainable make sketch) showing farm, center of section, this location with measurements and also wells, dry holes, or other locations in the vicinity of this location. Make copy to keep for reference and send original to Columbus office.



REMARKS:

SIGNED

Superintendent or Foreman.

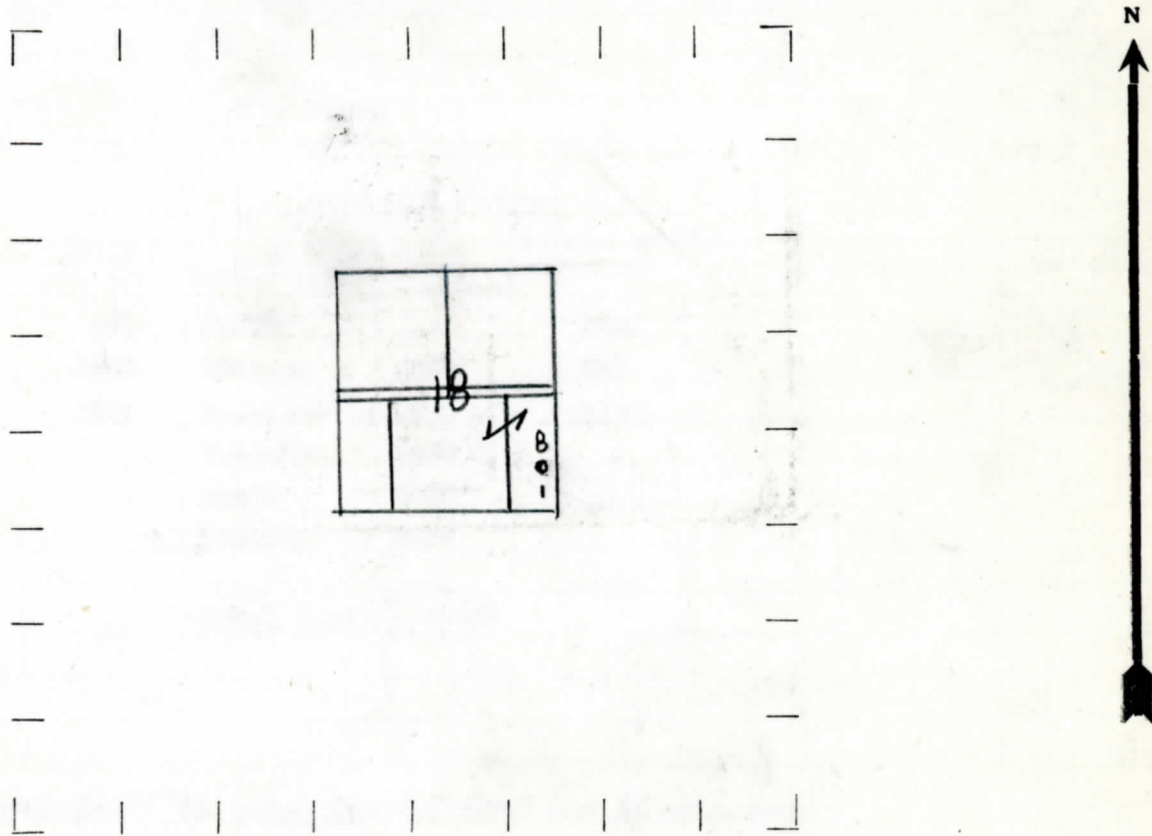
Feet from North Line of Farm  
300 " " East " " "  
900 " " South " " "  
" " West " " "

Feet from North Line of Section  
" " East " " "  
" " South " " "  
" " West " " "

LEGEND

- O LOCATION
- ① RIG
- ⊕ DRILLING
- ⊗ GAS WELL
- OIL WELL
- ⬮ SMALL OIL WELL
- ⬮ DRY HOLE
- ⬮ DRY SHOWING OIL
- ⬮ DRY SHOWING GAS
- ⬮ ABANDONED LOCATION
- ⬮ ABANDONED GAS WELL
- ⬮ ABANDONED OIL WELL

NOTE: Below make tracing from map, (when no map is obtainable make sketch) showing farm, center of section, this location with measurements and also wells, dry holes, or other locations in the vicinity of this location. Make copy to keep for reference and send original to Columbus office.



REMARKS:

SIGNED

Superintendent or Foreman.



Michigan Producing DIVISION  
DATE December 13, 1930. COMPLETION RECORD No. - 8 -

STATE Michigan COUNTY Cass DIST. TWP. Volinia SEC. 18 TOWN 5 S RANGE 14 W  
PREC.

WELL No. 1 (SERIAL No. 8) FARM W. Wright ACRES

NAME OF STREAM OR WATERS QUADRANGLE SE - SE

OPERATOR J.D. McClaren MAP Volinia Twp., Cass Co.

LOCATION REPORT SENT IN (DATE) 11-8-29

WELL STARTED (DATE) 11-8-29 WELL COMPLETED (DATE) 12-12-30

☐ CUMULATIVE ☐ RABBIT ☐ DRY HOLE ☐ ABANDONED WELL

CROSS OUT THREE OF THE ABOVE  
WELL RECORD

DATE OF SHOT NUMBER OF QUARTS

1st 24 HOURS PRODUCTION	dry	BARRELS OR FEET
2nd "	"	"
3rd "	"	"
4th "	"	"
5th "	"	"

SAND AND CASING

CASING SIZE	WEIGHT	CASING Feet Inches	SAND Name and Nature	TOP	BOTTOM	TOP PAY	BOTTOM PAY	SALT WATER
10"		403	Drift	0	352			
8 1/4"		1400	Redrock	530	535			
6 5/8"		2100	Br. shale	930	1015			
			Traverse	1060 ?				
			Shale	2090				
			Trenton	2552				
			Total depth	2728'				

REMARKS Show oil 1070-1080' HF water 1210' & 1410' HPW at 2030-2035'