



Western Michigan University
ScholarWorks at WMU

Legacy Scout Tickets from Pure Oil Company

8-20-2021

MGRRE_PureOilScoutTickets_Franz_1_21027008370000

MGRRE

Western Michigan University

Follow this and additional works at: <https://scholarworks.wmich.edu/pure>



Part of the Geology Commons

WMU ScholarWorks Citation

MGRRE, "MGRRE_PureOilScoutTickets_Franz_1_21027008370000" (2021). *Legacy Scout Tickets from Pure Oil Company*. 10995.

<https://scholarworks.wmich.edu/pure/10995>

This Document is brought to you for free and open access via ScholarWorks at WMU. It has been accepted for inclusion in Legacy Scout Tickets from Pure Oil Company by an authorized administrator of ScholarWorks at WMU. See the National Digital Catalogue - Science Base Catalogue for more collections submitted by MGRRE.



MGRRE_PureOilScoutTickets_Franz_1_21027008370000

API 21027008370000

Permit Number 837

Lease Name Franz

Well Number 1

County Cass

Township 07S

Range 16W

Section 3

2021 DEQ or Pure co_name Berrian Petroleum Syndicate

Pure Number 9

Latitude 41.88472

Longitude -86.14969

THE PURE OIL COMPANY

LOCATION REPORT

DATE Nov. 22nd, 1929No. 9STATE Michigan COUNTY Cass DIST. Howard SEC. 3 TOWN 7 S RANGE 16 #WELL No. 1 (SERIAL No. 9) FARM Fred Franz ACRESNAME OF STREAM OR WATERS QUADRANGLE SE - SEOPERATOR Berrien Petroleum Syndicate MAP Howard Township, Cass County

Feet from North Line of Farm

" " East " " "

250 " " South " " "

500 " " West " " "

Feet from North Line of Section

820 " " East " " "

250 " " South " " "

" " West " " "

LEGEND

○ LOCATION

① RIG

⊕ DRILLING

⊙ GAS WELL

● OIL WELL

⬤ SMALL OIL WELL

⬤ DRY HOLE

⬤ DRY SHOWING OIL

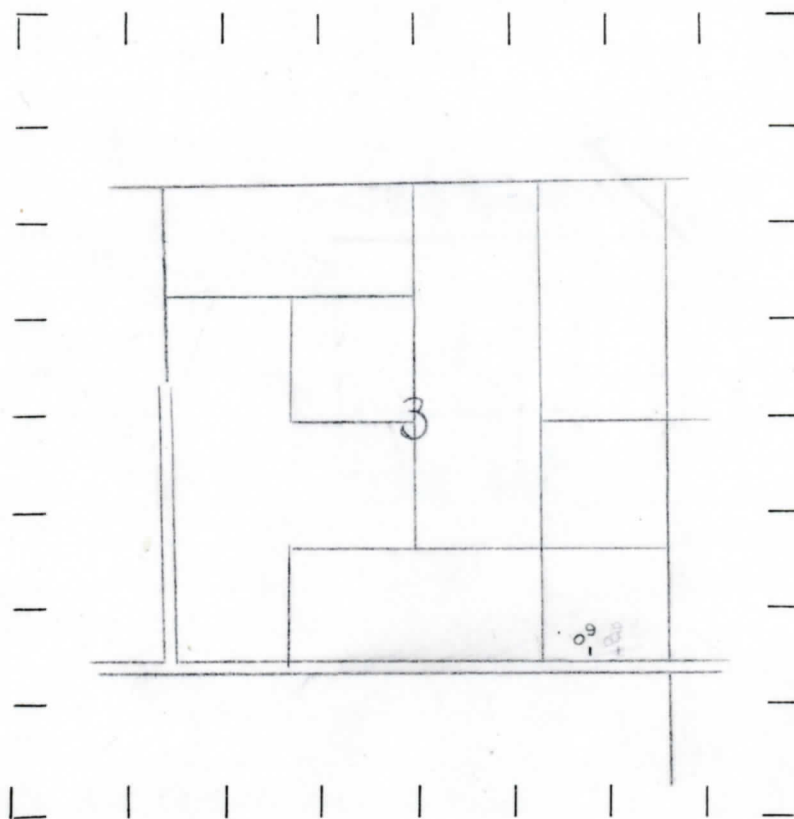
⬤ DRY SHOWING GAS

⬤ ABANDONED LOCATION

⬤ ABANDONED GAS WELL

⬤ ABANDONED OIL WELL

NOTE: Below make tracing from map, (when no map is obtainable make sketch) showing farm, center of section, this location with measurements and also wells, dry holes, or other locations in the vicinity of this location. Make copy to keep for reference and send original to Columbus office.



REMARKS:

SIGNED

Superintendent or Foreman.

Tracy Map Co.
1.14

DATE 11/15-29 LOCATION REPORT No. 10

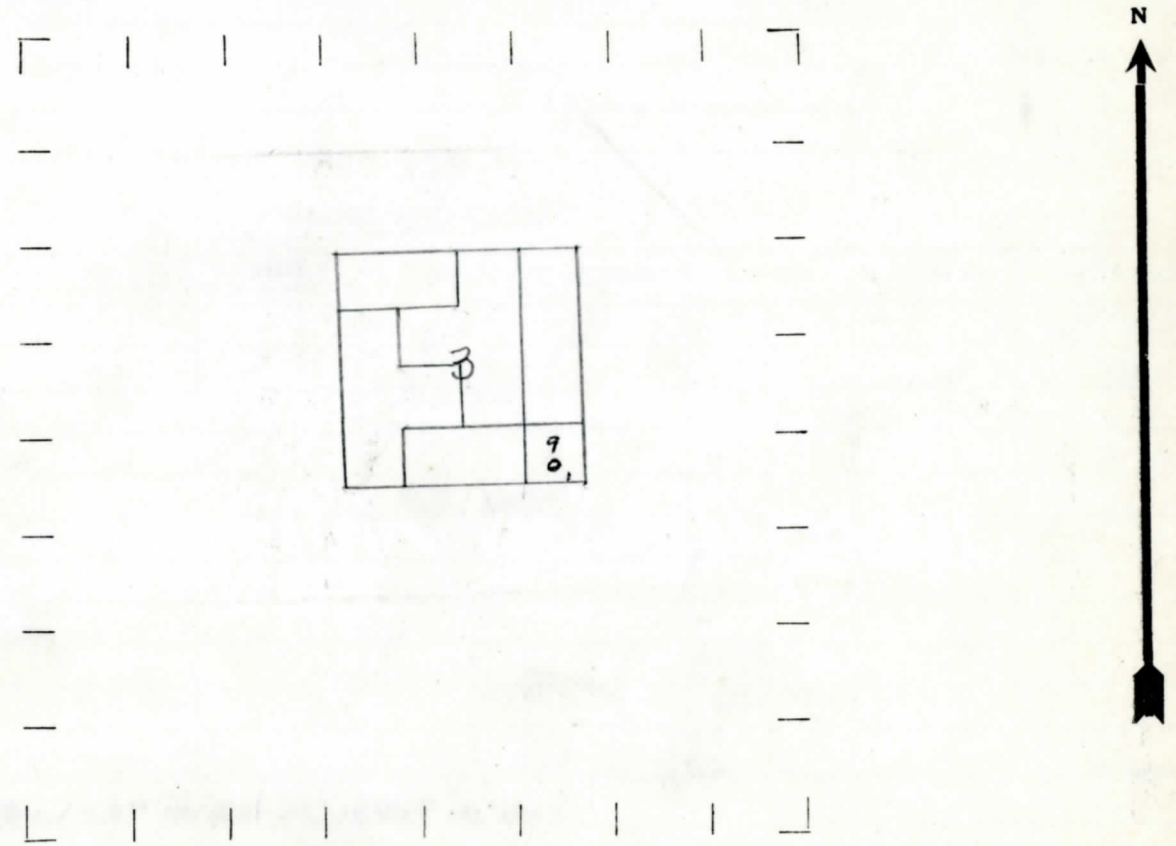
STATE Michigan COUNTY Cass DIST. Howard SEC. 3 TOWN 7S RANGE 16W
WELL No. 1 (SERIAL No. 9) FARM Fred Franz ACRES

NAME OF STREAM OR WATERS _____ QUADRANGLE SE-SE
OPERATOR Barrien Petroleum Synd. MAP Cass County - Plat Book

Feet from North Line of Farm
" " East " " "
250 " " South " " "
500 " " West " " "
Feet from North Line of Section
" " East " " "
820' " " South " " "
250 " " West " " "
500

- LEGEND**
- | | |
|------------------|----------------------|
| ○ LOCATION | ✦ DRY HOLE |
| ① RIG | ✦ DRY SHOWING OIL |
| ⊕ DRILLING | ✦ DRY SHOWING GAS |
| ⊙ GAS WELL | ⊙ ABANDONED LOCATION |
| ● OIL WELL | ⊙ ABANDONED GAS WELL |
| ⬮ SMALL OIL WELL | ⬮ ABANDONED OIL WELL |

NOTE: Below make tracing from map, (when no map is obtainable make sketch) showing farm, center of section, this location with measurements and also wells, dry holes, or other locations in the vicinity of this location. Make copy to keep for reference and send original to Columbus office.



REMARKS: _____

SIGNED W.B. Bell
Superintendent or Foreman.

ГОСЦИОН ВЕЪОВЪ

No

No. -9-

DATE May 10th, 1930.

WELL No. 12 (SERIAL No. 9) FARM Fred Franz ACRES

NAME OF STREAM OR WATERS _____ QUADRANGLE _____

OPERATOR Berrien Pet.Syn. MAP Howard Twp., Cass County

LOCATION REPORT SENT IN (DATE) November 22nd, 1929

WELL STARTED (DATE) November 1929. WELL COMPLETED (DATE) May 10th, 1930.

OIL WELL ??

CHINA

12345678910

A 1 2 3 4 5 6 7 8 9 10 11 12

CROSS OUT THREE OF THE ABOVE
WELL RECORD

DATE OF SHOT 4/29/30 NUMBER OF QUARTS 100

1st 24 HOURS PRODUCTION _____ BARRELS OR FEET

[illegible]

3rd " " " " " "

[illegible]

5th " " "

SAND AND CASING

[illegible]

REMARKS	Shot 100 qts. 580' to 630'- noreport on shot.
---------	---

NOTE:—MAKE COPY TO KEEP FOR REFERENCE AND SEND ORIGINAL TO CHICAGO OFFICE. LIST MATERIAL CHARGEABLE TO WELL ON OTHER SIDE.

SIGNED _____ SUPT. OR FOREMAN