



Western Michigan University
ScholarWorks at WMU

Legacy Scout Tickets from Pure Oil Company

8-20-2021

MGRRE_PureOilScoutTickets_Stutsman_2_21027009340000

MGRRE

Western Michigan University

Follow this and additional works at: <https://scholarworks.wmich.edu/pure>



Part of the Geology Commons

WMU ScholarWorks Citation

MGRRE, "MGRRE_PureOilScoutTickets_Stutsman_2_21027009340000" (2021). *Legacy Scout Tickets from Pure Oil Company*. 10996.

<https://scholarworks.wmich.edu/pure/10996>

This Document is brought to you for free and open access via ScholarWorks at WMU. It has been accepted for inclusion in Legacy Scout Tickets from Pure Oil Company by an authorized administrator of ScholarWorks at WMU. See the National Digital Catalogue - Science Base Catalogue for more collections submitted by MGRRE.



MGRRE_PureOilScoutTickets_Stutsman_2_21027009340000

API 21027009340000

Permit Number 934

Lease Name Stutsman

Well Number 2

County Cass

Township 07S

Range 13W

Section 32

2021 DEQ or Pure co_name Blair and Miller

Pure Number 10

Latitude 41.82181

Longitude -85.85021

THE PURE OIL COMPANY

DATE February 19, 1941

LOCATION REPORT

No. 10

LOCATION REPORT

No. 10

STATE Michigan COUNTY Cass DIST Porter TWP Porter SEC. 32 TOWN 7S RANGE 13W
 WELL No. 2 (SERIAL No. 10) FARM Chas. Stutsman ACRES

NAME OF STREAM OR WATERS _____ QUADRANGLE NE 1/4 - NW 1/4OPERATOR Blair & Miller Map Porter Twp., Cass County

Feet from North Line of Farm

" " East " " "

" " South " " "

" " West " " "

Feet from North Line of Section

" " East " " "

" " South " " "

" " West " " "

LEGEND

○ LOCATION

① RIG

⊕ DRILLING

☼ GAS WELL

● OIL WELL

◆ SMALL OIL WELL

⊙ DRY HOLE

◆ DRY SHOWING OIL

⊙ DRY SHOWING GAS

⊙ ABANDONED LOCATION

☼ ABANDONED GAS WELL

◆ ABANDONED OIL WELL

NOTE: Below make tracing from map, (when no map is obtainable make sketch) showing farm, center of section, this location with measurements and also wells, dry holes, or other locations in the vicinity of this location.

Plugged and abandoned 8-17-40
 Total Depth 703'

N

REMARKS:

SIGNED

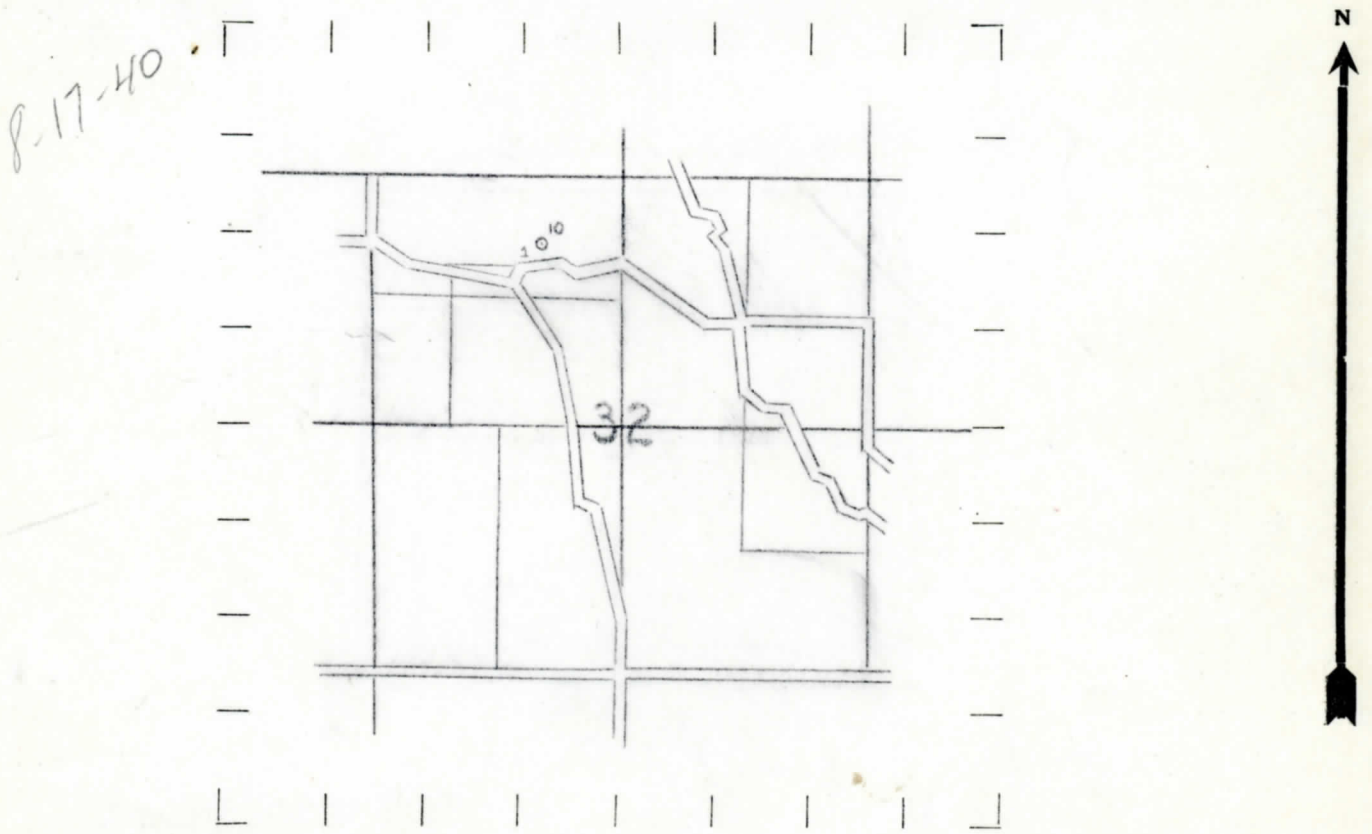
Superintendent or Foreman.

Observation Blair & Miller THE PUB. OIL CONTROL LAB. Cass County
DATE 8-17-40 LOCATION NE 1/4 - NW 1/4
NAME OF STREAM OR WATERS
WELL No. 2 (SERIAL No. 10) FARM Chas. Stutsman ACRES
STATE Michigan COUNTY Cass DIST. Porter SEC. 32 TOWN 7S RANGE 13W
WELL No. 2 (SERIAL No. 10) FARM Chas. Stutsman ACRES
NAME OF STREAM OR WATERS
OPERATOR Blair & Miller MAP Porter Twp., Cass County

780 Feet from North Line of Farm
" " East " " "
1858 " " South " " "
" " West " " "
780 Feet from North Line of Section
" " East " " "
" " South " " "
1858 " " West " " "

- LEGEND**
- | | |
|------------------|----------------------|
| ○ LOCATION | ✦ DRY HOLE |
| ① RIG | ✦ DRY SHOWING OIL |
| ⊕ DRILLING | ✦ DRY SHOWING GAS |
| ⊗ GAS WELL | ⊗ ABANDONED LOCATION |
| ● OIL WELL | ⊗ ABANDONED GAS WELL |
| ⬮ SMALL OIL WELL | ⬮ ABANDONED OIL WELL |

NOTE: Below make tracing from map, (when no map is obtainable make sketch) showing farm, center of section, this location with measurements and also wells, dry holes, or other locations in the vicinity of this location. Make copy to keep for reference and send original to Columbus office.



REMARKS: CORRECTED LOCATION REPORT

SIGNED _____

Superintendent or Foreman.

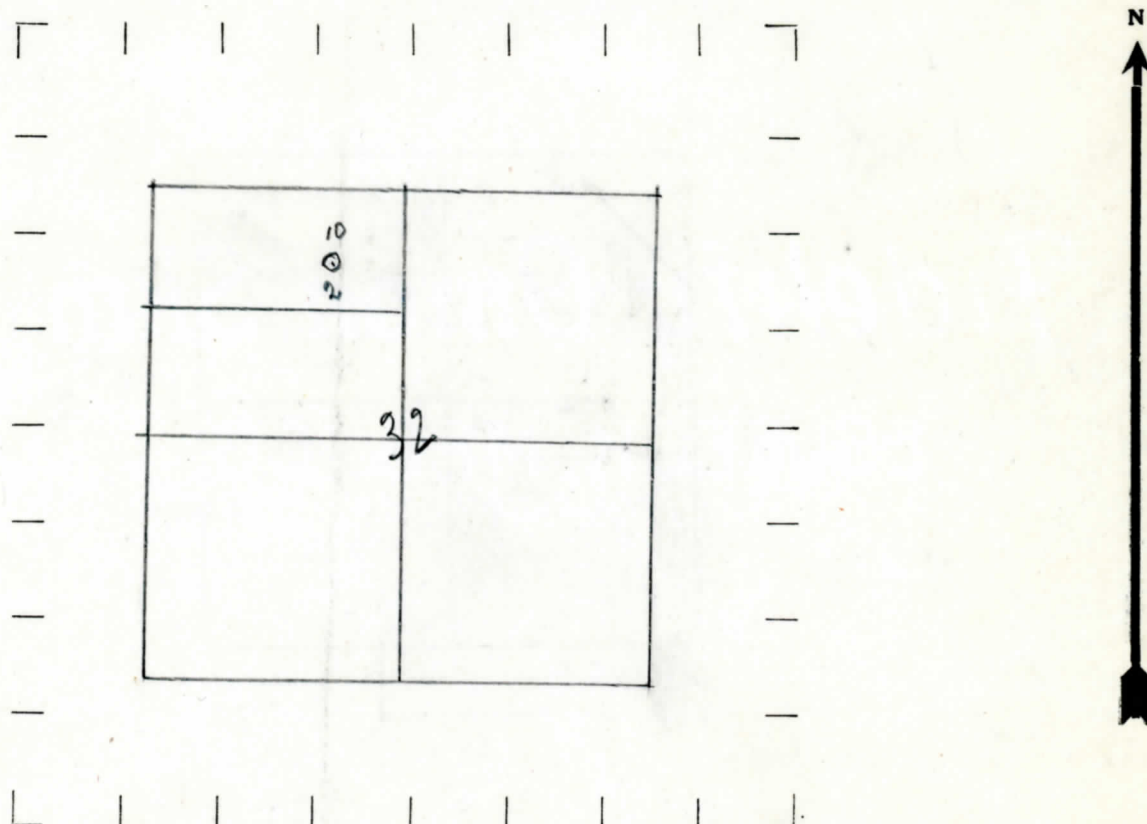
OBSERVATION Blair & Miller DATE 1913 COUNTY Cass TWP. Porter SEC. 32 TOWN 7S RANGE 13W
 NAME OF STREAM OR WATERS _____ QUADRANGLE NE-NW
 WELL No. 2 (SERIAL No. 10) FARM Chas Stutsman ACRES _____
 NAME OF STREAM OR WATERS _____ OPERATOR Blair & Miller MAP Cass Co - Porter Twp

_____ Feet from North Line of Farm
 _____ " " East " " "
 _____ " " South " " "
 _____ " " West " " "
 _____ 780' Feet from North Line of Section
 _____ " " East " " "
 _____ " " South " " "
 _____ 1858' " " West " " "

LEGEND

○ LOCATION	◆ DRY HOLE
① RIG	◆ DRY SHOWING OIL
⊕ DRILLING	◆ DRY SHOWING GAS
⊗ GAS WELL	⊗ ABANDONED LOCATION
● OIL WELL	⊗ ABANDONED GAS WELL
◆ SMALL OIL WELL	⊗ ABANDONED OIL WELL

NOTE: Below make tracing from map, (when no map is obtainable make sketch) showing farm, center of section, this location with measurements and also wells, dry holes, or other locations in the vicinity of this location. Make copy to keep for reference and send original to Columbus office.



REMARKS: Corrected Location

SIGNED

G. H. Bell

Superintendent or Foreman.

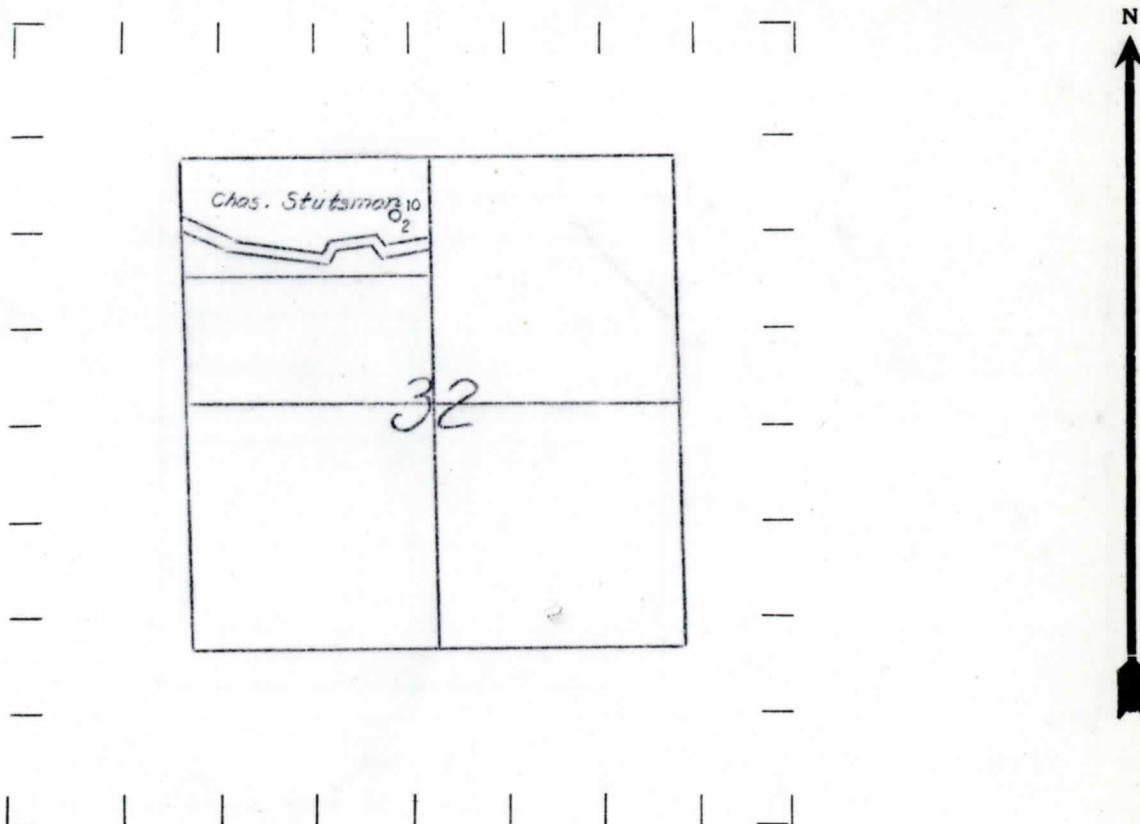
OBSERVATION *13012 F.W. 1151*
 NAME OF SURVEYOR OR ADVISOR *CONVEYANCE*
 MAP NO. *5* (SERIAL NO. *10*) FARM
 STATE *Michigan* COUNTY *Cass* TWP. *Porter* SEC. *32* TOWN *7 S* RANGE *13 W*
 WELL No. *2* (SERIAL No. *10*) FARM *Chas Stutsman* ACRES
 NAME OF STREAM OR WATERS QUADRANGLE *NE 1/4 - NW 1/4*
 OPERATOR *Blair & Miller* MAP *Porter Twp., Cass County*

650 Feet from North Line of Farm
 400 " " East " " "
 " " South " " "
 " " West " " "
 650 Feet from North Line of Section
 " " East " " "
 " " South " " "
 2240 " " West " " "

LEGEND

- | | |
|------------------|----------------------|
| ○ LOCATION | ✦ DRY HOLE |
| ① RIG | ✦ DRY SHOWING OIL |
| ⊕ DRILLING | ✦ DRY SHOWING GAS |
| ⊗ GAS WELL | ⊗ ABANDONED LOCATION |
| ● OIL WELL | ⊗ ABANDONED GAS WELL |
| ⬢ SMALL OIL WELL | ⬢ ABANDONED OIL WELL |

NOTE: Below make tracing from map, (when no map is obtainable make sketch) showing farm, center of section, this location with measurements and also wells, dry holes, or other locations in the vicinity of this location. Make copy to keep for reference and send original to Columbus office.



REMARKS:

SIGNED

Superintendent or Foreman.

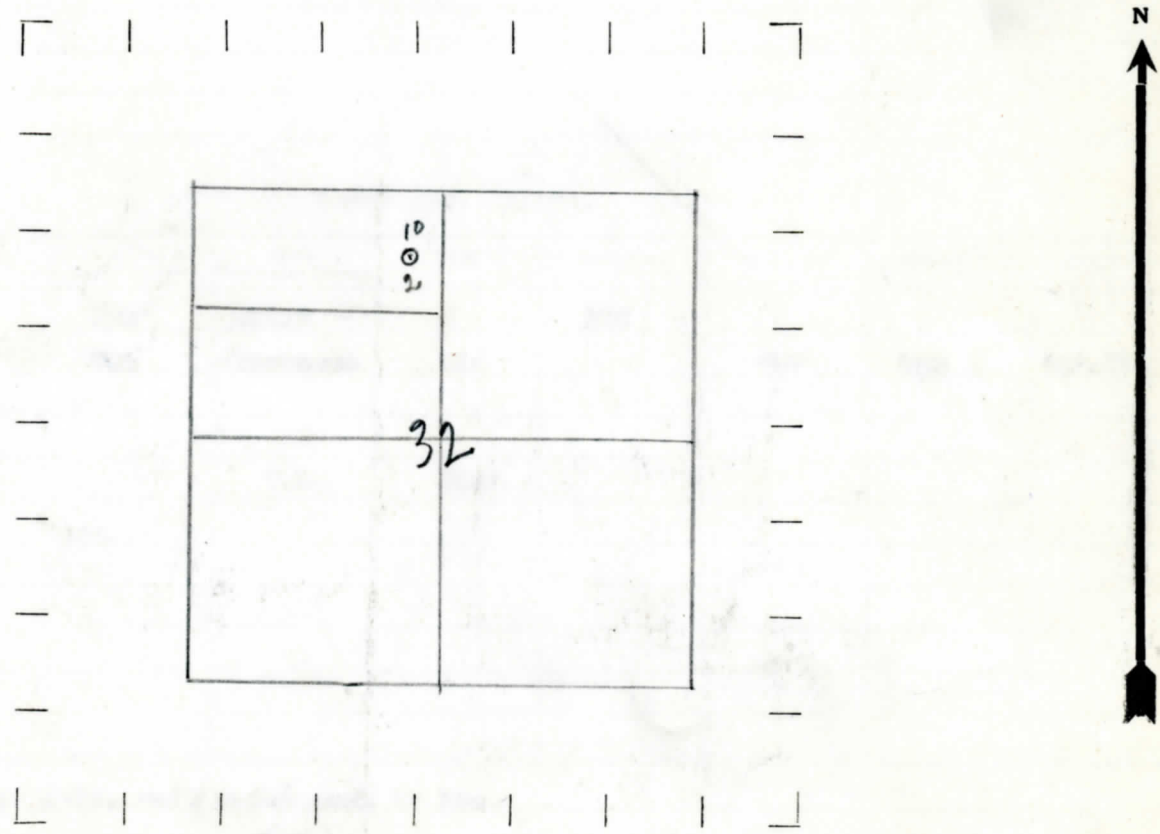
*Well
Twp*

OBSERVATION EST. & INT. L. DATE 10/10/1911 COUNTY Cass TWP. Porter SEC. 32 TOWN 15 RANGE 17W
 NAME OF SURVEYOR OR MEASURER Chas. Stutsman PREC. Chas. Stutsman ACRES 1.37
 STATE Michigan COUNTY Cass TWP. Porter SEC. 32 TOWN 15 RANGE 17W
 WELL No. 2 (SERIAL No. 10) FARM Chas. Stutsman ACRES 1.37
 NAME OF STREAM OR WATERS Blair & Miller QUADRANGLE NE-NW
 OPERATOR Blair & Miller MAP Cass Co. Porter Twp

650 Feet from North Line of Farm
 400 " " East " " "
 " " South " " "
 " " West " " "
 Feet from North Line of Section
 " " East " " "
 " " South " " "
 " " West " " "

- LEGEND**
- LOCATION
 - ① RIG
 - ⊕ DRILLING
 - ⊗ GAS WELL
 - OIL WELL
 - ⬮ SMALL OIL WELL
 - ⬮ DRY HOLE
 - ⬮ DRY SHOWING OIL
 - ⬮ DRY SHOWING GAS
 - ⬮ ABANDONED LOCATION
 - ⬮ ABANDONED GAS WELL
 - ⬮ ABANDONED OIL WELL

NOTE: Below make tracing from map, (when no map is obtainable make sketch) showing farm, center of section, this location with measurements and also wells, dry holes, or other locations in the vicinity of this location. Make copy to keep for reference and send original to Columbus office.



REMARKS:

SIGNED GAT Bell
 Superintendent or Foreman.

