



Western Michigan University  
ScholarWorks at WMU

---

Legacy Scout Tickets from Pure Oil Company

---

8-20-2021

**MGRRE\_PureOilScoutTickets\_Wright\_2\_21027012710000**

MGRRE

*Western Michigan University*

Follow this and additional works at: <https://scholarworks.wmich.edu/pure>



Part of the Geology Commons

---

#### WMU ScholarWorks Citation

MGRRE, "MGRRE\_PureOilScoutTickets\_Wright\_2\_21027012710000" (2021). *Legacy Scout Tickets from Pure Oil Company*. 10998.

<https://scholarworks.wmich.edu/pure/10998>

This Document is brought to you for free and open access via ScholarWorks at WMU. It has been accepted for inclusion in Legacy Scout Tickets from Pure Oil Company by an authorized administrator of ScholarWorks at WMU. See the National Digital Catalogue - Science Base Catalogue for more collections submitted by MGRRE.



---

## MGRRE\_PureOilScoutTickets\_Wright\_2\_21027012710000

API 21027012710000

Permit Number 1271

Lease Name Wright

Well Number 2

County Cass

Township 05S

Range 14W

Section 18

2021 DEQ or Pure co\_name Stammmler, Scott

Pure Number 12

Latitude 42.02809

Longitude -85.97745

THE PURE OIL COMPANY

## LOCATION REPORT

No. -12-

DATE 4-15-32STATE Michigan COUNTY Cass TWP. Volinia SEC. 18 TOWN 5-S RANGE 14-WWELL No. 12 (SERIAL No. 12) FARM Wm. Wright 80 ACRES

NAME OF STREAM OR WATERS \_\_\_\_\_ QUADRANGLE \_\_\_\_\_

OPERATOR Scott Stammer MAP \_\_\_\_\_\_\_\_\_\_  
Feet from North Line of Farm\_\_\_\_\_  
" " East " " "\_\_\_\_\_  
400 " " South " " "\_\_\_\_\_  
300 " " West " " "\_\_\_\_\_  
Feet from North Line of Section\_\_\_\_\_  
1020 " " East " " "\_\_\_\_\_  
400 " " South " " "\_\_\_\_\_  
" " West " " "LEGEND

○ LOCATION

① RIG

⊕ DRILLING

⊙ GAS WELL

● OIL WELL

⦿ SMALL OIL WELL

✦ DRY HOLE

✦ DRY SHOWING OIL

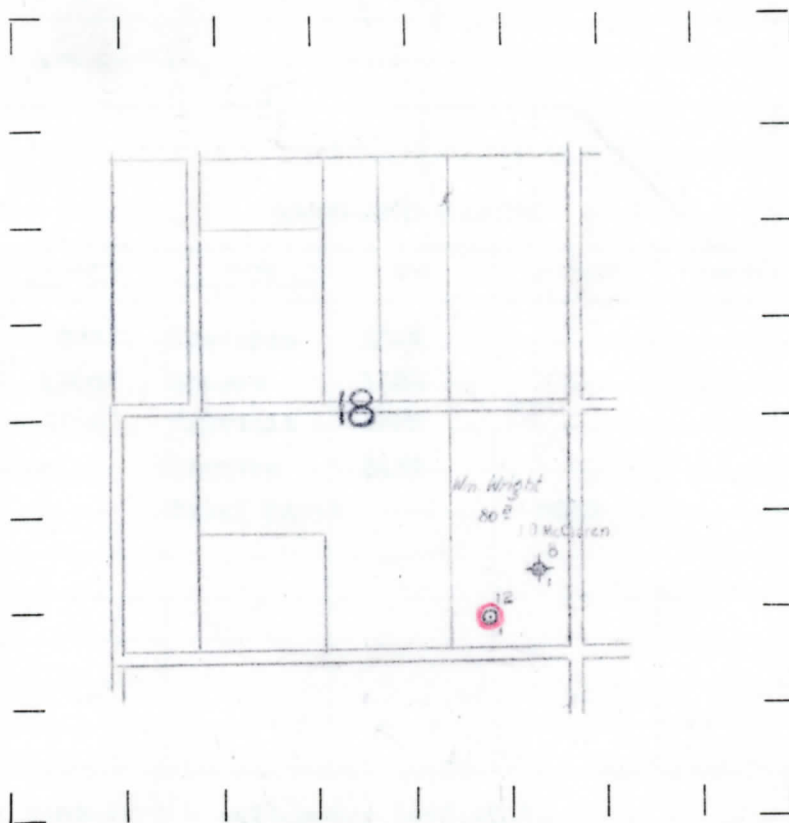
✦ DRY SHOWING GAS

⦿ ABANDONED LOCATION

✦ ABANDONED GAS WELL

⦿ ABANDONED OIL WELL

NOTE: Below make tracing from map, (when no map is obtainable make sketch) showing farm, center of section, this location with measurements and also wells, dry holes, or other locations in the vicinity of this location. Make copy to keep for reference and send original to Columbus office.



## REMARKS:

This location is 720' West and 500' South of our Serial #8.

SIGNED \_\_\_\_\_

\_\_\_\_\_  
Superintendent or Foreman.

Form 243 10M 6-25-28 P100 POCO

**THE PURE OIL COMPANY**

~~Michigan Producing~~ DIVISION

DATE 2/3/33

## COMPLETION RECORD

No. 12

STATE Michigan COUNTY Cass DIST. Volinia TWP. 18 SEC. 18 TOWN 59 RANGE 14W

WELL No. 2 (SERIAL No. 12) FARM Wm. Wright ACRES 80

NAME OF STREAM OR WATERS \_\_\_\_\_ QUADRANGLE \_\_\_\_\_

OPERATOR Scott Stammer MAP Volinia Twp.-Cass Co.

LOCATION REPORT SENT IN (DATE) 4-16-32

WELL STARTED (DATE) 4-16-32 WELL COMPLETED (DATE) 2-1-33

## OIL WELL

## GAS WELL

## DRY HOLE

## ABANDONED WELL

E1. 894.4

**CROSS OUT THREE OF THE ABOVE**

## WELL RECORD

DATE OF SHOT \_\_\_\_\_ NUMBER OF QUARTS \_\_\_\_\_

1st 24 HOURS PRODUCTION	Dry Hole	BARRELS OR FEET
-------------------------	----------	-----------------

2nd " " "

3rd " " " " " " " "

4th	“	“	“		“	“	“
-----	---	---	---	--	---	---	---

5th " " "

## SAND AND CASING

[illegible]REMARKS Show oil 2489-2495 - salt water 2495-2517.