



Western Michigan University
ScholarWorks at WMU

Legacy Scout Tickets from Pure Oil Company

8-20-2021

MGRRE_PureOilScoutTickets_Allen Estate_1_21027017790000

MGRRE

Western Michigan University

Follow this and additional works at: <https://scholarworks.wmich.edu/pure>



Part of the Geology Commons

WMU ScholarWorks Citation

MGRRE, "MGRRE_PureOilScoutTickets_Allen Estate_1_21027017790000" (2021). *Legacy Scout Tickets from Pure Oil Company*. 11001.

<https://scholarworks.wmich.edu/pure/11001>

This Document is brought to you for free and open access via ScholarWorks at WMU. It has been accepted for inclusion in Legacy Scout Tickets from Pure Oil Company by an authorized administrator of ScholarWorks at WMU. See the National Digital Catalogue - Science Base Catalogue for more collections submitted by MGRRE.



MGRRE_PureOilScoutTickets_Allen Estate_1_21027017790000

API 21027017790000

Permit Number 1779

Lease Name Allen Estate

Well Number 1

County Cass

Township 07S

Range 13W

Section 31

2021 DEQ or Pure co_name Carter Lake Oil and Gas Company

Pure Number 15

Latitude 41.82275

Longitude -85.85838

THE PURE OIL COMPANY

LOCATION REPORT

No. 15

DATE November 3, 1933

STATE Michigan COUNTY Cass DIST. Porter SEC. 31 TOWN 7 S RANGE 13 W
 WELL No. 1 (SERIAL No. 15) FARM Allen Estate ACRES _____
 NAME OF STREAM OR WATERS _____ QUADRANGLE NE-NE-NE
 OPERATOR Carter Lake Oil & Gas Company MAP Porter Township, Cass County

330 Feet from North Line of Farm
330 " " East " " "
 " " South " " "
 " " West " " "
330 Feet from North Line of Section
330 " " East " " "
 " " South " " "
 " " West " " "

LEGEND

O LOCATION

① RIG

② DRILLING

⊗ GAS WELL

● OIL WELL

⊙ SMALL OIL WELL

⊕ DRY HOLE

⊕ DRY SHOWING OIL

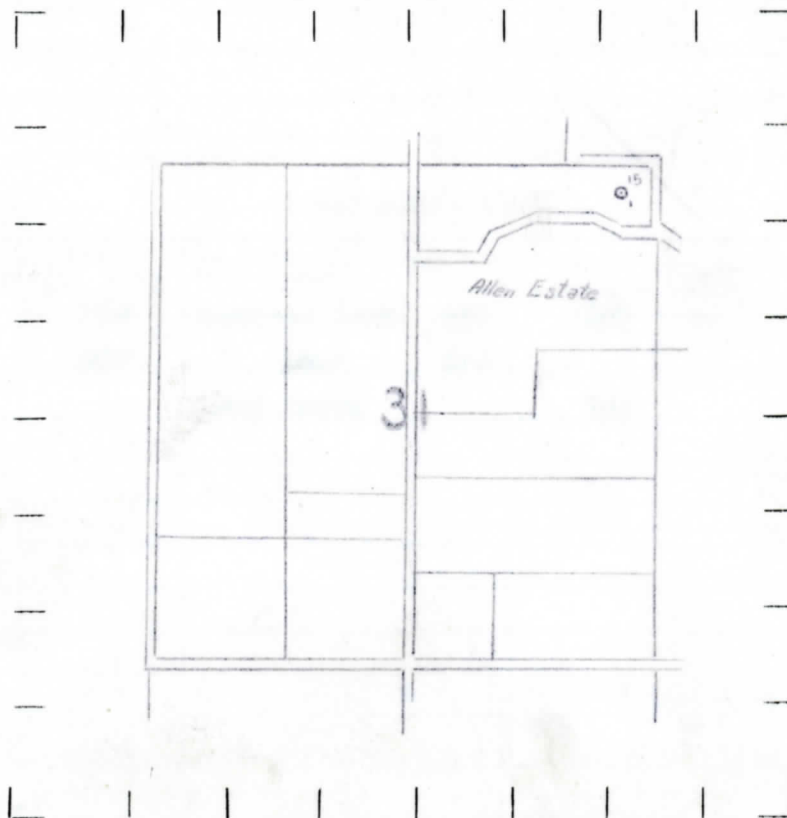
⊕ DRY SHOWING GAS

⊕ ABANDONED LOCATION

⊕ ABANDONED GAS WELL

⊕ ABANDONED OIL WELL

NOTE: Below make tracing from map, (when no map is obtainable make sketch) showing farm, center of section, this location with measurements and also wells, dry holes, or other locations in the vicinity of this location. Make copy to keep for reference and send original to Columbus office.



REMARKS:

SIGNED

R. L. Neugebauer
 Superintendent or Foreman.

Per. No. 1779

Michigan Producing DIVISION

COMPLETION RECORD

No. 15

WELL No. 1 (SERIAL No. 15) FARM Allen Estate ACRES 2.00

NAME OF STREAM OR WATERS _____ QUADRANGLE NE-NE-NE

OPERATOR Carter Lake Oil & Gas Company MAP Porter Township, Cass County

LOCATION REPORT SENT IN (DATE) 11-3-33

WELL STARTED (DATE) 11-8-33 WELL COMPLETED (DATE) 7-16-34

ODKWEIL

EXS/VERUX

DRY HOLE

~~ALL INFORMATION CONTAINED HEREIN IS UNCLASSIFIED~~

El. 819

CROSS OUT THREE OF THE ABOVE
WELL RECORD

[illegible]

1st 24 HOURS PRODUCTION				BARRELS OR FEET
1	2	3	4	5
6	7	8	9	10
11	12	13	14	15
16	17	18	19	20
21	22	23	24	25
26	27	28	29	30
31	32	33	34	35
36	37	38	39	40
41	42	43	44	45
46	47	48	49	50
51	52	53	54	55
56	57	58	59	60
61	62	63	64	65
66	67	68	69	70
71	72	73	74	75
76	77	78	79	80
81	82	83	84	85
86	87	88	89	90
91	92	93	94	95
96	97	98	99	100

2nd " " "

3rd " " " " " "

4th " " " " " "

[illegible]

SAND AND CASING

[illegible]

REMARKS Show gas 693'.

NOTE.—MAKE COPY TO KEEP FOR REFERENCE AND SEND ORIGINAL TO CHICAGO OFFICE. LIST MATERIAL CHARGEABLE TO WELL ON OTHER SIDE.

SIGNED

G. H. Bell

SUPT. OR FOREMAN