



Western Michigan University
ScholarWorks at WMU

Legacy Scout Tickets from Pure Oil Company

8-20-2021

MGRRE_PureOilScoutTickets_Neel, Wm. C._1_21027050430000

MGRRE

Western Michigan University

Follow this and additional works at: <https://scholarworks.wmich.edu/pure>



Part of the Geology Commons

WMU ScholarWorks Citation

MGRRE, "MGRRE_PureOilScoutTickets_Neel, Wm. C._1_21027050430000" (2021). *Legacy Scout Tickets from Pure Oil Company*. 11004.

<https://scholarworks.wmich.edu/pure/11004>

This Document is brought to you for free and open access via ScholarWorks at WMU. It has been accepted for inclusion in Legacy Scout Tickets from Pure Oil Company by an authorized administrator of ScholarWorks at WMU. See the National Digital Catalogue - Science Base Catalogue for more collections submitted by MGRRE.



MGRRE_PureOilScoutTickets_Neel, Wm. C._1_21027050430000

API 21027050430000

Permit Number 5043

Lease Name Neel, Wm. C.

Well Number 1

County Cass

Township 05S

Range 14W

Section 6

2021 DEQ or Pure co_name Obenauer, Guy M.

Pure Number 18

Latitude 42.06044

Longitude -85.99068

The Pure Oil Company
COMPLETION RECORD OF WELLS DRILLED BY OTHER OPERATORS

DATE May 26, 1938

LOCATION REPORT

No. 18
 STATE Michigan COUNTY Cass DIST. Valinia TWP. Volinia SEC. 6 TOWN 5-S RANGE 14W

 WELL No. 1 (SERIAL No. 18) FARM Wm. C. Neel ACRES

 NAME OF STREAM OR WATERS QUADRANGLE SW-NW-SW

 OPERATOR Guy M. Obenauer Map Valinia Township - Cass County
Guy M. Obenauer
Feet from North Line of Farm

" " East " " "

330 330 " " South " " "

330 330 " " West " " "

990 990 Feet from North Line of Section 1/4

" " East " " "

" " South " " "

330 330 " " West " " "

LEGEND

○ LOCATION

① RIG

⊕ DRILLING

☀ GAS WELL

● OIL WELL

◆ SMALL OIL WELL

⊙ DRY HOLE

◆ DRY SHOWING OIL

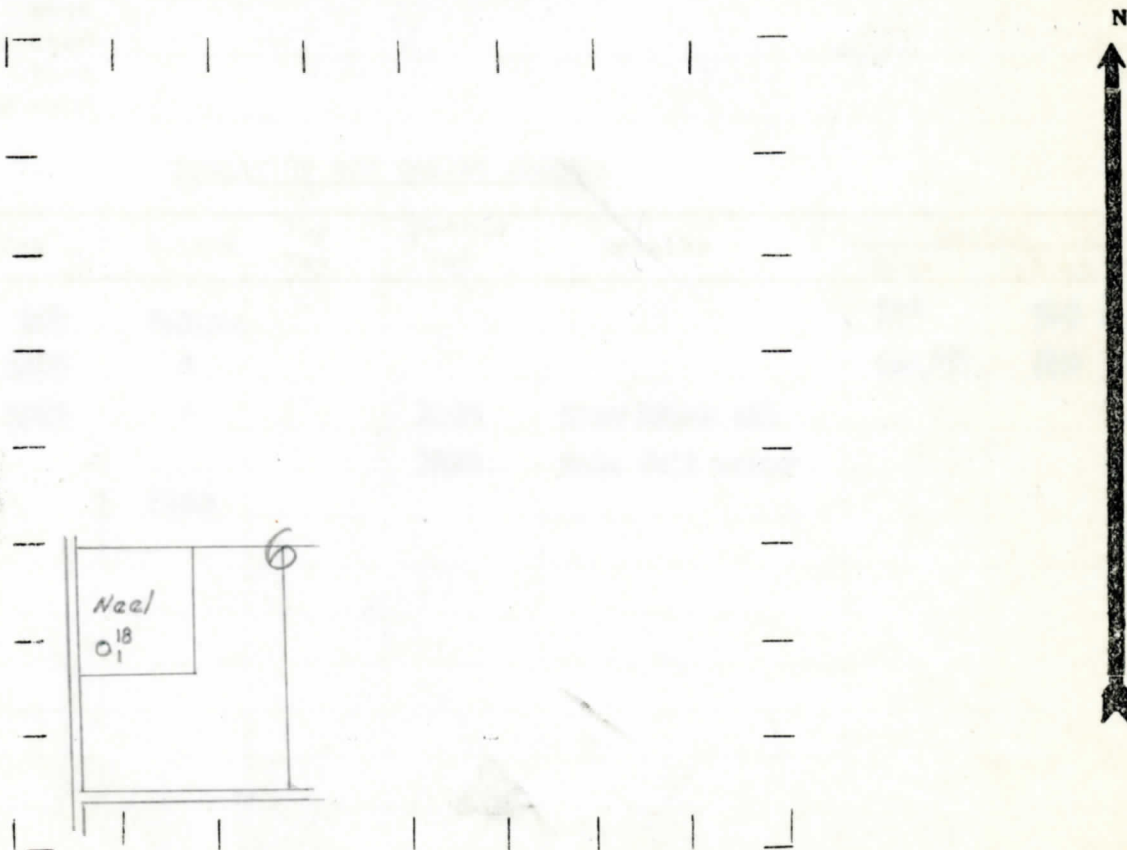
⊙ DRY SHOWING GAS

⊙ ABANDONED LOCATION

☀ ABANDONED GAS WELL

◆ ABANDONED OIL WELL

NOTE: Below make tracing from map, (when no map is obtainable make sketch) showing farm, center of section, this location with measurements and also wells, dry holes, or other locations in the vicinity of this location.



REMARKS:

SIGNED

R. A. Yeager
Superintendent or Foreman.

