



Western Michigan University
ScholarWorks at WMU

Legacy Scout Tickets from Pure Oil Company

8-20-2021

MGRRE_PureOilScoutTickets_Wright, Arthur_1_21027051140000

MGRRE

Western Michigan University

Follow this and additional works at: <https://scholarworks.wmich.edu/pure>



Part of the Geology Commons

WMU ScholarWorks Citation

MGRRE, "MGRRE_PureOilScoutTickets_Wright, Arthur_1_21027051140000" (2021). *Legacy Scout Tickets from Pure Oil Company*. 11005.

<https://scholarworks.wmich.edu/pure/11005>

This Document is brought to you for free and open access via ScholarWorks at WMU. It has been accepted for inclusion in Legacy Scout Tickets from Pure Oil Company by an authorized administrator of ScholarWorks at WMU. See the National Digital Catalogue - Science Base Catalogue for more collections submitted by MGRRE.



MGRRE_PureOilScoutTickets_Wright, Arthur_1_21027051140000

API 21027051140000

Permit Number 5114

Lease Name Wright, Arthur

Well Number 1

County Cass

Township 05S

Range 13W

Section 18

2021 DEQ or Pure co_name Gordon Oil Company

Pure Number 19

Latitude 42.04003

Longitude -85.86744

The Pure Oil Company
THE PURE OIL COMPANY

COMPLETION RECORD OF WELLS DRILLED BY OTHER OPERATORS

DATE June 30, 1938

LOCATION REPORT

No. 19

STATE Michigan COUNTY Cass DIST. Marcellus TWP. Marcellus SEC. 18 TOWN 5 S RANGE 13 W
 WELL No. 1 (SERIAL No. 19) FARM Arthur Wright ACRES NW NW NE

NAME OF STREAM OR WATERS _____ QUADRANGLE NW NW NE

OPERATOR Gordon Oil Company Map Marcellus Township, Cass County
Gordon Oil Co. Marcellus - Cass.

Feet from North Line of Farm

" " East " " "

453 453 " " South " " "

330 330 " " West " " "

453 453 Feet from North Line of Section

" " East " " "

" " South " " "

330 330 " " West " 1/4 "

LEGEND

○ LOCATION

① RIG

⊕ DRILLING

☼ GAS WELL

● OIL WELL

● SMALL OIL WELL

⊙ DRY HOLE

⊙ DRY SHOWING OIL

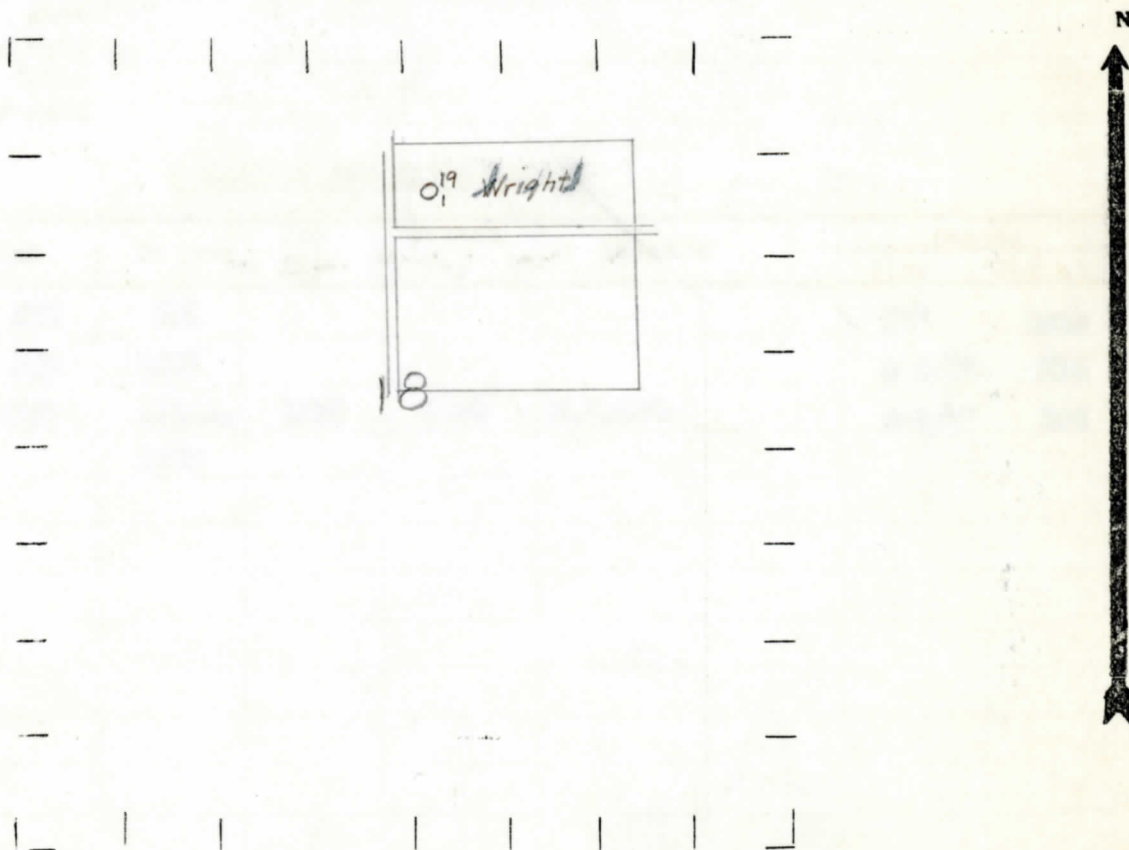
⊙ DRY SHOWING GAS

⊙ ABANDONED LOCATION

☼ ABANDONED GAS WELL

● ABANDONED OIL WELL

NOTE: Below make tracing from map, (when no map is obtainable make sketch) showing farm, center of section, this location with measurements and also wells, dry holes, or other locations in the vicinity of this location.



REMARKS:

SIGNED

Superintendent or Foreman.

Michigan Producing Division

Date **July 21, 1938**

No. **19**

State **Mich.** County **Cass**

Distok

Twp. **Marcellus**

Sec. 18

Twp. 58

Rge **13** W

(Serial No.)

Well No. 1 (~~XXXXXXXXXX~~) 19

Farm

Arthur Wright

Acres

By

Operator **Gordon Oil Company**

Information secured ~~xxxxx~~ Scouting Department

Date well started..... **6-28-38**

Date well completed

7-15-38

Elevation **878.6**

PRODUCTION RECORD

1st 24 hours natural **Dry Hole**

2nd 24 hours natural

[illegible]

Date of acid	No. of gallons
--------------------	----------------

shot
1st 24 hours after acid

shot
2nd 24 hours after acid

FORMATION AND CASING RECORD

[illegible]

Remarks.

Signed **D. C. Shackelford**