



Western Michigan University  
ScholarWorks at WMU

---

Legacy Scout Tickets from Pure Oil Company

---

8-20-2021

**MGRRE\_PureOilScoutTickets\_Robinson, G. L.\_1\_21027069320000**

MGRRE

*Western Michigan University*

Follow this and additional works at: <https://scholarworks.wmich.edu/pure>



Part of the Geology Commons

---

#### WMU ScholarWorks Citation

MGRRE, "MGRRE\_PureOilScoutTickets\_Robinson, G. L.\_1\_21027069320000" (2021). *Legacy Scout Tickets from Pure Oil Company*. 11013.

<https://scholarworks.wmich.edu/pure/11013>

This Document is brought to you for free and open access via ScholarWorks at WMU. It has been accepted for inclusion in Legacy Scout Tickets from Pure Oil Company by an authorized administrator of ScholarWorks at WMU. See the National Digital Catalogue - Science Base Catalogue for more collections submitted by MGRRE.



---

**MGRRE\_PureOilScoutTickets\_Robinson, G. L.\_1\_21027069320000**

API 21027069320000

Permit Number 6932

Lease Name Robinson, G. L.

Well Number 1

County Cass

Township 05S

Range 14W

Section 16

2021 DEQ or Pure co\_name Michi Cal Oil Company

Pure Number 27

Latitude 42.03496

Longitude -85.95324

THE PURE OIL COMPANY

COMPLETION RECORD OF WELLS DRILLED BY OTHER OPERATORS

DATE October 27, 1939

LOCATION REPORT

No. 27

STATE Michigan COUNTY Cass DIST. Volinia SEC. 16 TOWN 5-S RANGE 14 W  
WELL No. 1 (SERIAL No. 27) FARM G. L. Robinson ACRES

NAME OF STREAM OR WATERS \_\_\_\_\_ QUADRANGLE SW-SW-NW

OPERATOR Michigan-Cal Oil Company Map Volinia-Cass

990 990 Feet from North Line of Farm

" " East " " "

" " South " " "

330 330 " " West " " "

Feet from North Line of Section

" " East " " "

330 330 " " South " " "

330 330 " " West " " "

LEGEND

○ LOCATION

⊙ RIG

⊕ DRILLING

☼ GAS WELL

● OIL WELL

● SMALL OIL WELL

⊙ DRY HOLE

● DRY SHOWING OIL

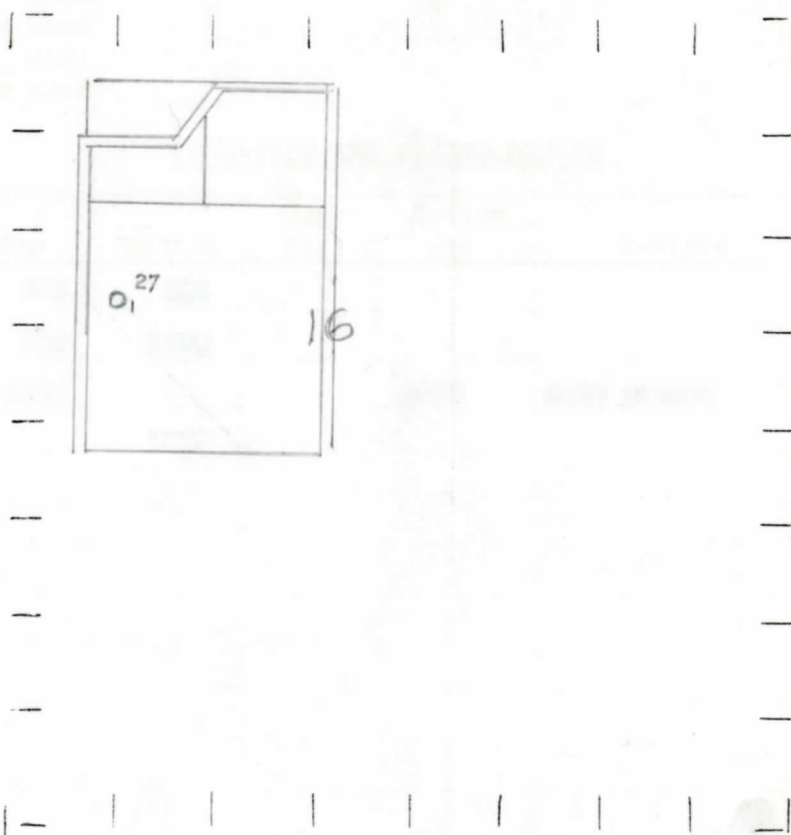
⊙ DRY SHOWING GAS

⊙ ABANDONED LOCATION

☼ ABANDONED GAS WELL

● ABANDONED OIL WELL

NOTE: Below make tracing from map. (when no map is obtainable make sketch) showing farm, center of section, this location with measurements and also wells, dry holes, or other locations in the vicinity of this location.



REMARKS:

SIGNED

Superintendent or Foreman.

