



Western Michigan University
ScholarWorks at WMU

Legacy Scout Tickets from Pure Oil Company

8-20-2021

MGRRE_PureOilScoutTickets_Flynn, Lee_2_21027076900000

MGRRE

Western Michigan University

Follow this and additional works at: <https://scholarworks.wmich.edu/pure>



Part of the Geology Commons

WMU ScholarWorks Citation

MGRRE, "MGRRE_PureOilScoutTickets_Flynn, Lee_2_21027076900000" (2021). *Legacy Scout Tickets from Pure Oil Company*. 11017.

<https://scholarworks.wmich.edu/pure/11017>

This Document is brought to you for free and open access via ScholarWorks at WMU. It has been accepted for inclusion in Legacy Scout Tickets from Pure Oil Company by an authorized administrator of ScholarWorks at WMU. See the National Digital Catalogue - Science Base Catalogue for more collections submitted by MGRRE.



MGRRE_PureOilScoutTickets_Flynn, Lee_2_21027076900000

API 21027076900000

Permit Number 7690

Lease Name Flynn, Lee

Well Number 2

County Cass

Township 05S

Range 16W

Section 23

2021 DEQ or Pure co_name Silver Creek Oil Company

Pure Number 31

Latitude 42.02452

Longitude -86.14503

THE PURE OIL COMPANY

The Pure Oil Company

DATE May 29, 1940

LOCATION REPORT

No. 7 31

STATE Michigan COUNTY Cass DIST. Silver Creek SEC. 23 TOWN 55SS RANGE 16
 WELL No. 22 (SERIAL No. 31) FARM Lee Flynn ACRES

NAME OF STREAM OR WATERS _____ QUADRANGLE SW-NW-NW-NWOPERATOR Silver Creek Oil Company Map Silver Creek Township, Cass County990 990 Silver Creek Oil Co.
Feet from North Line of Farm

" " East " " "

" " South " " "

330 330 " " West " " "990 990 Feet from North Line of Section

" " East " " "

" " South " " "

330 330 " " West " " "

LEGEND

○ LOCATION

① RIG

⊕ DRILLING

⊗ GAS WELL

● OIL WELL

⬮ SMALL OIL WELL

⊙ DRY HOLE

⬮ DRY SHOWING OIL

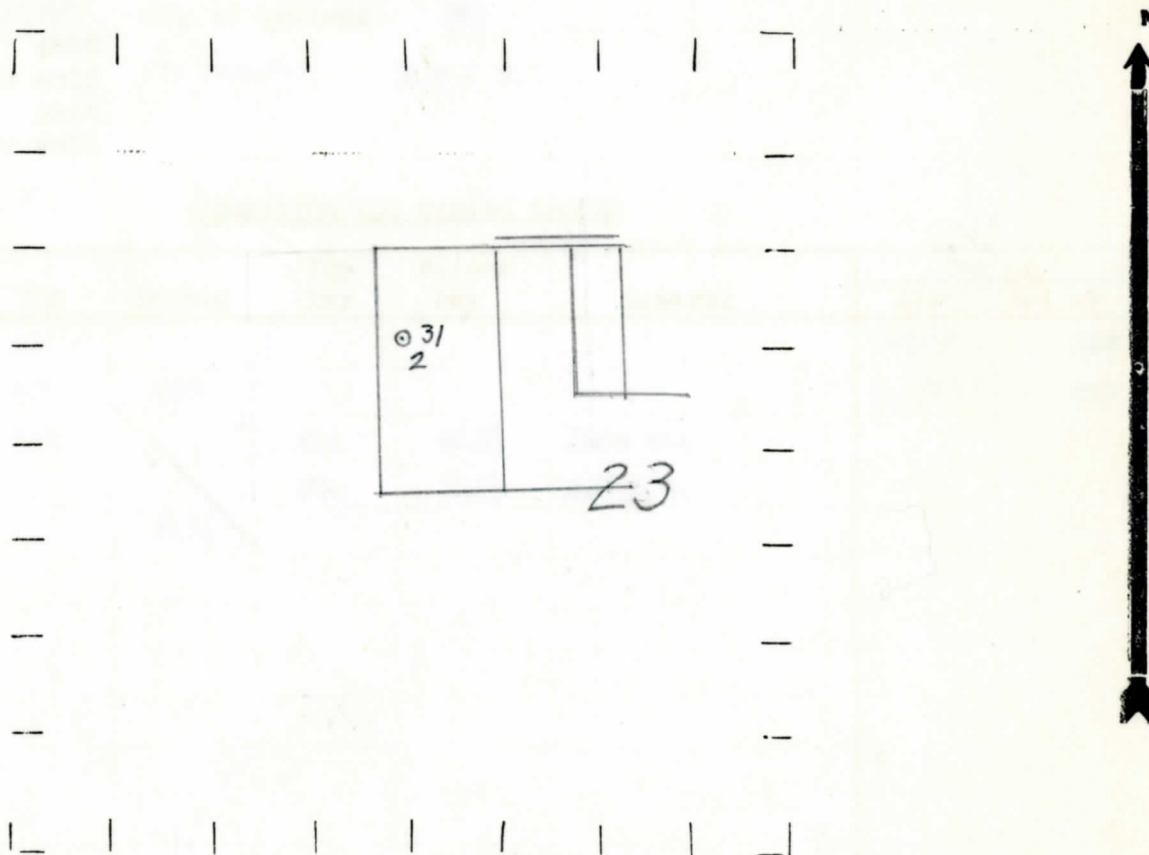
⊙ DRY SHOWING GAS

⊙ ABANDONED LOCATION

⊙ ABANDONED GAS WELL

⬮ ABANDONED OIL WELL

NOTE: Below make tracing from map, (when no map is obtainable make sketch) showing farm, center of section, this location with measurements and also wells, dry holes, or other locations in the vicinity of this location.



REMARKS:

SIGNED

W

Superintendent or Foreman.

Signed **D. C. Shackelford**