



Western Michigan University  
ScholarWorks at WMU

---

Legacy Scout Tickets from Pure Oil Company

---

8-20-2021

MGRRE\_PureOilScoutTickets\_Wonderlich, E.  
C.\_1\_21027082430000

MGRRE  
*Western Michigan University*

Follow this and additional works at: <https://scholarworks.wmich.edu/pure>



Part of the Geology Commons

---

#### WMU ScholarWorks Citation

MGRRE, "MGRRE\_PureOilScoutTickets\_Wonderlich, E. C.\_1\_21027082430000" (2021). *Legacy Scout Tickets from Pure Oil Company*. 11027.  
<https://scholarworks.wmich.edu/pure/11027>

This Document is brought to you for free and open access via ScholarWorks at WMU. It has been accepted for inclusion in Legacy Scout Tickets from Pure Oil Company by an authorized administrator of ScholarWorks at WMU. See the National Digital Catalogue - Science Base Catalogue for more collections submitted by MGRRE.



---

**MGRRE\_PureOilScoutTickets\_Wonderlich, E. C.\_1\_21027082430000**

API 21027082430000

Permit Number 8243

Lease Name Wonderlich, E. C.

Well Number 1

County Cass

Township 05S

Range 16W

Section 23

2021 DEQ or Pure co\_name Silver Creek Oil Company and O. B. Custance Trustee

Pure Number 41

Latitude 42.02183

Longitude -86.13778

## THE PURE OIL COMPANY

DATE November 27, 1940

## LOCATION REPORT

No. 41STATE MichiganCOUNTY CassTWP. Silver CreekSEC. 23TOWN 5 SRANGE 16 WWELL No. 1 (SERIAL No. 41) FARM E. C. WonderlichACRES 164

NAME OF STREAM OR WATERS

QUADRANGLE C 23 SE NWOPERATOR Silver Creek Oil CompanyMap Silver Creek Township, Cass County330 330

Feet from North Line of Farm

330 330

" " East " " "

" " South " " "

" " West " " "

Feet from North Line of Section

330 330" " East " 1/4 "660 660

" " South " " "

" " West " " "

## LEGEND

○ LOCATION

① RIG

⊕ DRILLING

☼ GAS WELL

● OIL WELL

◆ SMALL OIL WELL

⊙ DRY HOLE

◆ DRY SHOWING OIL

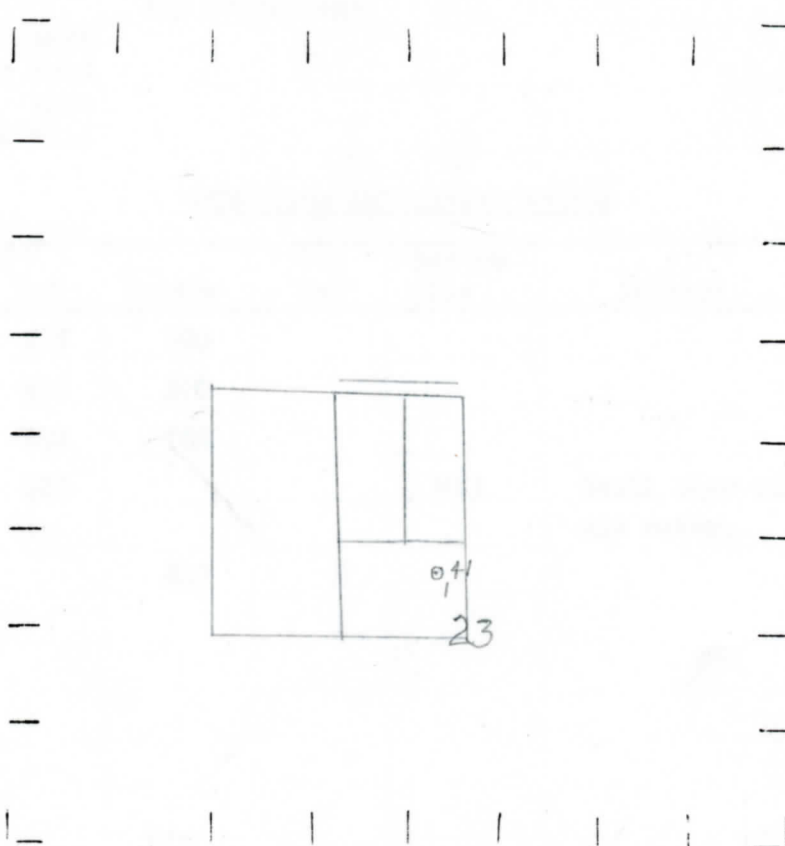
☼ DRY SHOWING GAS

⊙ ABANDONED LOCATION

☼ ABANDONED GAS WELL

◆ ABANDONED OIL WELL

NOTE: Below make tracing from map, (when no map is obtainable make sketch) showing farm, center of section, this location with measurements and also wells, dry holes, or other locations in the vicinity of this location.



N



REMARKS:

SIGNED

Subintendent or Foreman.

