



Western Michigan University
ScholarWorks at WMU

Legacy Scout Tickets from Pure Oil Company

8-20-2021

MGRRE_PureOilScoutTickets_Carter, J. M._1_21027088870000

MGRRE

Western Michigan University

Follow this and additional works at: <https://scholarworks.wmich.edu/pure>



Part of the Geology Commons

WMU ScholarWorks Citation

MGRRE, "MGRRE_PureOilScoutTickets_Carter, J. M._1_21027088870000" (2021). *Legacy Scout Tickets from Pure Oil Company*. 11035.

<https://scholarworks.wmich.edu/pure/11035>

This Document is brought to you for free and open access via ScholarWorks at WMU. It has been accepted for inclusion in Legacy Scout Tickets from Pure Oil Company by an authorized administrator of ScholarWorks at WMU. See the National Digital Catalogue - Science Base Catalogue for more collections submitted by MGRRE.



MGRRE_PureOilScoutTickets_Carter, J. M._1_21027088870000

API 21027088870000

Permit Number 8887

Lease Name Carter, J. M.

Well Number 1

County Cass

Township 07S

Range 14W

Section 1

2021 DEQ or Pure co_name Phillips, Sue Stradley

Pure Number 49

Latitude 41.88453

Longitude -85.87667

THE PURE OIL COMPANY

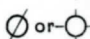
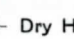

LOCATION REPORT

Date April 19, 1946 A.F.E. No. _____Division Mich. Producing District _____ Lease J. M. CarterAcres _____ Lease No. _____ Elevation _____ Well No. 1 (Serial No. 49)Quadrangle NE SE SE Sec. 1 Twp. 7 S Rge. 14 W Twp. CalvinSurvey _____ County Cass State MichiganOperator Sue Stradley Phillips Map Calvin Township, Cass County

____ Feet from North Line of Lease
 ____ " " East " " "
 ____ " " South " " "
 ____ " " West " " "
 ____ Feet from North Line of Section
 ____ " " East " " "
 ____ " " South " " "
 ____ " " West " " "

LEGEND

○ Location

 Gas Well Oil Well Gas - Distillate Well or  Dry Hole Dry Showing Oil Dry Showing Gas Abandoned Location or  Abandoned Gas Well or  Abandoned Oil Well or  Input Well

Plugged and abandoned 3-26-46.

Total Depth 968'.



Scale _____

Remarks: _____

Submitted by Scouting Dept. Approved by _____ Division Manager

Approved by _____ Vice-President - General Manager

Date

VBLT 10' 10' 10'

LOCATION REPORT

V.E.E. NO.

No.

STATE Michigan COUNTY Cass DIST. Calvin TWP. Calvin SEC. 1 TOWN 73 RANGE 14 W
 WELL No. 1 (SERIAL No. 49) FARM J. M. Carter ACRES

NAME OF STREAM OR WATERS QUADRANGLE NE-SE-SE

OPERATOR Sue Stradley Phillips Map Calvin Township, Cass County

330 330 Feet from North Line of Farm

330 330 " " East " " "

" " South " " "

" " West " " "

Feet from North Line of Section

330 330 " " East " 1/4 "

990 990 " " South " " "

" " West " " "

LEGEND

○ LOCATION

⊙ RIG

⊕ DRILLING

☼ GAS WELL

● OIL WELL

● SMALL OIL WELL

⊙ DRY HOLE

⊙ DRY SHOWING OIL

⊙ DRY SHOWING GAS

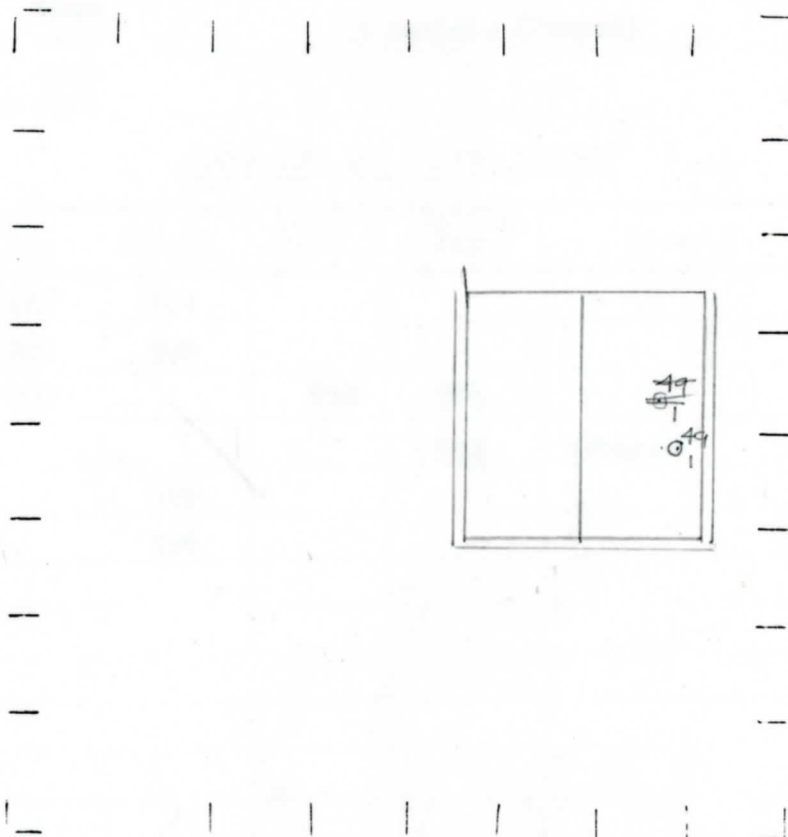
⊙ ABANDONED LOCATION

☼ ABANDONED GAS WELL

● ABANDONED OIL WELL

NOTE: Below make tracing from map, (when no map is obtainable make sketch) showing farm, center of section, this location with measurements and also wells, dry holes, or other locations in the vicinity of this location.

3-26-46



REMARKS:

SIGNED

W
 Superintendent or Foreman.

Signed D. C. Shackelford