



Western Michigan University
ScholarWorks at WMU

Legacy Scout Tickets from Pure Oil Company

8-20-2021

MGRRE_PureOilScoutTickets_Carter, J. N._1_21027094510000

MGRRE

Western Michigan University

Follow this and additional works at: <https://scholarworks.wmich.edu/pure>



Part of the Geology Commons

WMU ScholarWorks Citation

MGRRE, "MGRRE_PureOilScoutTickets_Carter, J. N._1_21027094510000" (2021). *Legacy Scout Tickets from Pure Oil Company*. 11037.

<https://scholarworks.wmich.edu/pure/11037>

This Document is brought to you for free and open access via ScholarWorks at WMU. It has been accepted for inclusion in Legacy Scout Tickets from Pure Oil Company by an authorized administrator of ScholarWorks at WMU. See the National Digital Catalogue - Science Base Catalogue for more collections submitted by MGRRE.



MGRRE_PureOilScoutTickets_Carter, J. N._1_21027094510000

API 21027094510000

Permit Number 9451

Lease Name Carter, J. N.

Well Number 1

County Cass

Township 07S

Range 13W

Section 6

2021 DEQ or Pure co_name Atha, Robert W.

Pure Number 51

Latitude 41.88451

Longitude -85.87425

Date March 25, 1942 Corrected **THE PURE OIL COMPANY** Serial No. 51
LOCATION REPORT A.F.E. No. _____
Division Michigan Producing District _____ Lease J. N. Carter
Acres _____ Lease No. _____ Elevation _____ Well No. 1
Quadrangle NW SW SW ~~not~~ Sec. 6 Twp. 7 S Rge. 13 W ~~BOX~~ ~~DISC~~ North Porter
Survey _____ County Cass State Michigan
Operator Robert W. Atha Map North Porter Township, Cass County

____ Feet North of South Line of Lease
____ " East " West " " "
____ " South " North " " "
____ " West " East " " "
____ Feet North of South Line of Section
____ " East " West " " "
____ " South " North " " "
____ " West " East " " "

LEGEND

Gas Well	Dry Showing Gas
Oil Well	Abandoned Location
or Dry Hole	or Abandoned Gas Well
Dry Showing Oil	or Abandoned Oil Well



See plat - Serial No. 51.

Remarks: Correction in farm name. Scale _____

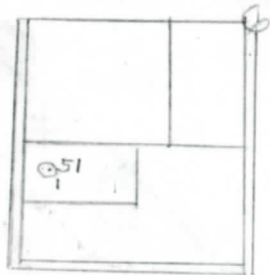
Submitted by _____ Civil Engineer Approved by _____ Division Manager
Approved by _____ Vice-President - General Manager

Acres _____ Lease No. _____ Elevation _____ Well No. _____
 Quadrange NW SW SW Sec. 6 Twp. 7 S Rge. 13 W Twp. North Porter
 Survey _____ County Cass State Michigan
 Operator Robert W. Atha Map North Porter Township, Cass County

330	330	Feet North of South Line of Lease
330	330	" East " West " " "
		" South " North " " "
		" West " East " " "
990	990	Feet North of South Line of Section
330	330	" East " West " " "
		" South " North " " "
		" West " East " " "

LEGEND

- Location
- ☀ Gas Well
- Oil Well
- ☉ or ○ Dry Hole
- Dry Showing Oil
- ☀ Dry Showing Gas
- ⊗ Abandoned Location
- ☀ or ☉ Abandoned Gas Well
- or ● Abandoned Oil Well



Remarks: _____ Scale _____

Submitted by W Civil Engineer
 Approved by _____ Division Manager
 Approved by _____ Vice-President - General Manager

ОГосардон
ГЕСЕИД

Obertor Horst M. Voss

Σημειώσεις

ՆԱԽԱՐԱԿ

Date April 11, 1964

State Mich. County _____ Case 5180 Twp. North Porter Sec. 6 Twp. 7 S Rge. 13 W

Well No. 1 (Serial No.) 51 Farm J. N. Carter Acres

Operator Robert W. Atha Information secured ^{By}~~from~~ Scouting Department

Date well started **3-5-42** Date well completed **3-25-42** Elevation **914.9**

PRODUCTION RECORD

	Dry Hole
1st 24 hours natural	

2nd 24 hours natural

Date of shot 4-6-42 No. of quarts 10 From 945' to 949' From _____ to _____

Date of acid 3-27-42 and 3-30-42 No. of gallons 11.55

1st 24 hours after acid No results from Acid or shot.

2nd 24 hours after shot acid

FORMATION AND CASING RECORD

[illegible]

Remarks 896' CTM equals 909' SLM; 922' CTM equals 922' SLM.

Signed D. C. Shackelford