



Western Michigan University  
ScholarWorks at WMU

---

Legacy Scout Tickets from Pure Oil Company

---

8-20-2021

**MGRRE\_PureOilScoutTickets\_Flynn, Lee &  
Grace\_4\_21027101990000**

MGRRE  
*Western Michigan University*

Follow this and additional works at: <https://scholarworks.wmich.edu/pure>



Part of the Geology Commons

---

#### WMU ScholarWorks Citation

MGRRE, "MGRRE\_PureOilScoutTickets\_Flynn, Lee & Grace\_4\_21027101990000" (2021). *Legacy Scout Tickets from Pure Oil Company*. 11038.  
<https://scholarworks.wmich.edu/pure/11038>

This Document is brought to you for free and open access via ScholarWorks at WMU. It has been accepted for inclusion in Legacy Scout Tickets from Pure Oil Company by an authorized administrator of ScholarWorks at WMU. See the National Digital Catalogue - Science Base Catalogue for more collections submitted by MGRRE.



---

**MGRRE\_PureOilScoutTickets\_Flynn, Lee & Grace\_4\_21027101990000**

API 21027101990000

Permit Number 10199

Lease Name Flynn, Lee & Grace

Well Number 4

County Cass

Township 05S

Range 16W

Section 14

2021 DEQ or Pure co\_name Lund,Otto

Pure Number 52

Latitude 42.02814

Longitude -86.1426

# THE PURE OIL COMPANY LOCATION REPORT

Date July 8, 1943 A.F.E. No. \_\_\_\_\_  
 Division Mich. Producing District \_\_\_\_\_ Lease Lee Flynn and Grace Flynn  
 Acres \_\_\_\_\_ Lease No. \_\_\_\_\_ Elevation \_\_\_\_\_ Well No. 4 (Serial No. 52)  
 Quadrange SE-SW-SW Sec. 14 Twp. 5 S Rge. 16 W Twp. Silver Creek  
 Survey \_\_\_\_\_ County Cass State Michigan  
 Operator Otto Lund Map Silver Creek Township, Cass County

		Feet from North Line of Lease
<u>330'</u>	<u>330</u>	" " East " " "
<u>330'</u>	<u>330</u>	" " South " " "
		" " West " " "
		Feet from North Line of Section
		" " East " " "
<u>330'</u>	<u>330</u>	" " South " <u>1/4</u>
<u>990'</u>	<u>990</u>	" " West " " "

## LEGEND

○ Location

☀ Gas Well

● Oil Well

☀ Gas - Distillate Well

○ or ○ Dry Hole

● Dry Showing Oil

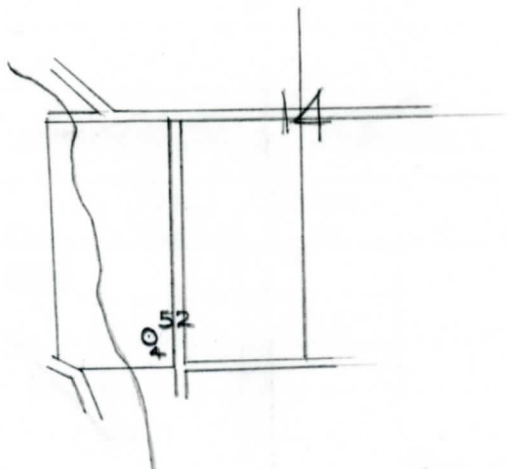
☀ Dry Showing Gas

○ Abandoned Location

☀ or ☀ Abandoned Gas Well

● or ● Abandoned Oil Well

● or ○ Input Well



Scale \_\_\_\_\_

Remarks: \_\_\_\_\_

Submitted by RN Civil Engineer Approved by \_\_\_\_\_ Division Manager

Approved by \_\_\_\_\_ Vice-President - General Manager

## COMPLETION RECORD OF WELLS DRILLED BY OTHER OPERATORS

Michigan Producing Division

Date August 11, 1943 No. 52  
State Mich. County Cass ~~Block~~ Twp. Silver Creek Sec. 14 Twp. 5 S Rge. 16 W  
(Serial No.)  
Well No. 4 (~~25~~) 52 Farm Flynn Acres  
By  
Operator Otto Lund Information secured ~~from~~ Scouting Department  
Date well started 7-12-43 Date well completed 8-5-43 Elevation 734.6

# PRODUCTION RECORD

Dry Hole

1st 24 hours natural

2nd 24 hours natural

Date of shot	No. of quarts	From	to	From	to
Date of acid	No. of gallons				
1st 24 hours after acid shot					
2nd 24 hours after acid shot					

## FORMATION AND CASING RECORD

Formation	Top	Bottom	Top Pay	Bottom Pay	Remarks	Casing	
						Size	Set at
Goldw. Red Rock	287	287½				8-5/8"	224
Antrim (light)	525					6-5/8"	300
Antrim (dark)	675						
Traverse Form.	765						
Traverse Lime	803				Show oil and 400 ft. black salt water at 805.		
Total Depth		816					

Remarks

Signed D. C. Shackelford