



Western Michigan University  
ScholarWorks at WMU

---

Legacy Scout Tickets from Pure Oil Company

---

8-20-2021

**MGRRE\_PureOilScoutTickets\_Walker, Stanley and  
Helen\_1\_21027108570000**

MGRRE  
*Western Michigan University*

Follow this and additional works at: <https://scholarworks.wmich.edu/pure>



Part of the Geology Commons

---

#### WMU ScholarWorks Citation

MGRRE, "MGRRE\_PureOilScoutTickets\_Walker, Stanley and Helen\_1\_21027108570000" (2021). *Legacy Scout Tickets from Pure Oil Company*. 11041.  
<https://scholarworks.wmich.edu/pure/11041>

This Document is brought to you for free and open access via ScholarWorks at WMU. It has been accepted for inclusion in Legacy Scout Tickets from Pure Oil Company by an authorized administrator of ScholarWorks at WMU. See the National Digital Catalogue - Science Base Catalogue for more collections submitted by MGRRE.



---

**MGRRE\_PureOilScoutTickets\_Walker, Stanley and Helen\_1\_21027108570000**

API 21027108570000

Permit Number 10857

Lease Name Walker, Stanley and Helen

Well Number 1

County Cass

Township 07S

Range 13W

Section 32

2021 DEQ or Pure co\_name Michill Development Company

Pure Number 55

Latitude 41.81572

Longitude -85.84615

# THE PURE OIL COMPANY LOCATION REPORT

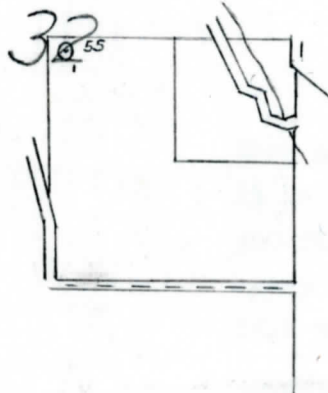
Date June 21, 1944 A.F.E. No. \_\_\_\_\_  
 Division Mich. Producing District \_\_\_\_\_ Lease Stanley & Helen Walker  
 Acres \_\_\_\_\_ Lease No. \_\_\_\_\_ Elevation \_\_\_\_\_ Well No. 1 (Serial No. 55)  
 Quadrangle NW NW SE Sec. 32 Twp. 7 S Rge. 13 W Twp. North Porter  
 Survey \_\_\_\_\_ County Cass State Michigan  
 Operator Michill Development Co. Map North Porter Township, Cass County

330330 Feet from North Line of Lease  
 " " East " " "  
 " " South " " "  
330330 " " West " " "  
330330 Feet from North Line of Section  
 " " East " " "  
 " " South " " "  
330330 " " West " " "

## LEGEND

○ Location

- |                         |                           |
|-------------------------|---------------------------|
| ☼ Gas Well              | ☼ Dry Showing Gas         |
| ● Oil Well              | ⊗ Abandoned Location      |
| ☼ Gas - Distillate Well | ☼ or ⊗ Abandoned Gas Well |
| ○ or ⊗ Dry Hole         | ● or ● Abandoned Oil Well |
| ● Dry Showing Oil       | ⊗ or ⊗ Input Well         |



N



Remarks: \_\_\_\_\_ Scale \_\_\_\_\_

Submitted by \_\_\_\_\_ Civil Engineer Approved by \_\_\_\_\_ Division Manager  
 Approved by \_\_\_\_\_ Vice-President - General Manager

