



Western NEWS

OCTOBER 25, 2001
volume 28, number 5

www.wmich.edu/wmu/news

Berrah to focus on science in Nov. 8 faculty scholar talk

Nora Berrah, physics and the University's 2000 Distinguished Faculty Scholar, will speak to the University community Thursday, Nov. 8.

"The Exciting World of Science" is the topic of the Distinguished Faculty Scholar Colloquium that Berrah will present at 4 p.m. in 157-158 Bernhard Center. An atomic physicist who is leading an international "dream team" of scientists exploring atomic and molecular photoionization, Berrah received the University's highest faculty honor last winter. The award included a plaque, a \$2,000 cash award, \$2,000 added to her base salary and an opportunity to address the University community through a colloquium.

Berrah, who has been on the WMU faculty since 1991, is recognized as one of the world's leading atomic physicists. She has received nearly \$3 million in U.S. Department of Energy funding for her research on the structure and dynamics of atoms and molecules. More than \$1 million of that funding has been for Berrah's leadership of a team of international scientists who developed a sophisticated experimental research facility at the Advanced Light Source located at Lawrence Berkley National Laboratory.

Trustees to meet tomorrow

The University's Board of Trustees will meet tomorrow at 2:30 p.m. in the Connable Board Room of the Bernhard Center.

The board's annual evaluation of President Elson S. Floyd is on the agenda as well as consideration of three new master's degree programs and a graduate certificate program. Trustees also will hear the final grant report for the 2000-01 fiscal year.

Meetings of the board's two standing committees will precede the meeting of the full board in 204 Bernhard Center. The Academic and Student Affairs Committee will meet at 1 p.m. and the Budget and Finance Committee will meet at 1:30 p.m.

WMUK hits goal in final hours

Loyal listeners and new donors stepped up to the plate, helping WMUK-FM reach its fall fund drive goal.

The University's public radio station met the campaign goal at 5:16 p.m. on Friday, Oct. 19, about three hours before the drive was scheduled to end.

The total amount received was \$220,835, topping the campaign goal of \$220,000. The station halts the campaign as soon as the goal is reached.

"The phones kept ringing," says Vickie Langkam, WMUK marketing and development. "We told people we had reached the goal, but they continued to pledge anyway."

The drive brought in 371 new donors, helping to make up for the loss of listeners who had moved recently from the Kalamazoo area. In all, 2,700 people made pledges to 105 volunteers who answered phones. The average pledge was \$82.

Langkam says many supporters doubled their pledges from last year, with many callers voicing their appreciation for ongoing coverage of recent events after terrorist attacks in New York and Washington, D.C.

BTR lands multi-firm building, new tenant

A well-known Michigan engineering firm will be the first tenant of a facility that will be built by local developers at the University's Business Technology and Research Park on the Parkview Campus.

Fishbeck, Thompson, Carr & Huber Inc., an engineering, scientific and architectural firm, will be the anchor tenant in a 24,000-

collaboration will occur between the firm and University researchers and academic programs.

"This is another wonderful example of the private sector choosing to partner with the University," Miller says. "In this case, FTC&H will work closely with the College of Engineering and Applied Sciences as it develops its new civil engineering program.

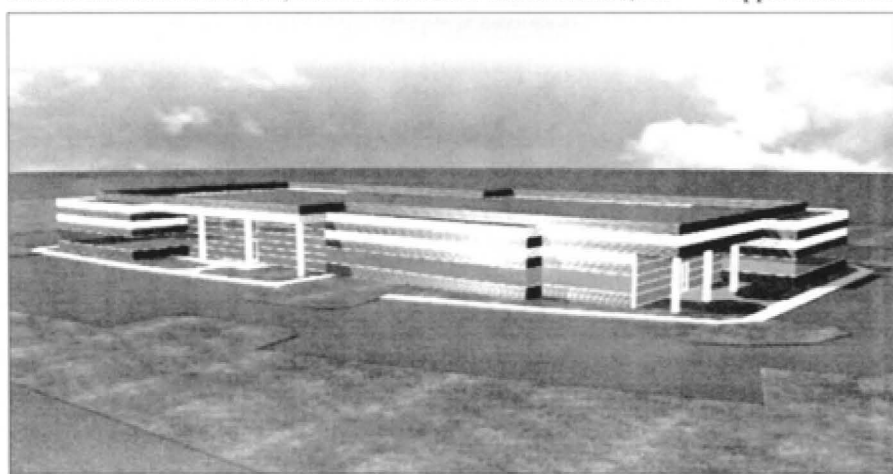
The firm also has a well-respected environmental practice, and its representatives already have met with researchers in the University's Environmental Institute to discuss the possibility of working together."

The College of Engineering and Applied Sciences also will be located at the University's Parkview Campus. The college is planning a civil engineering program and expects the first classes in the discipline to be offered in fall 2003.

"We are delighted at the prospect of having a firm of this caliber as a resident partner in the BTR," says Dean Daniel M. Litynski. "They offer an outstanding example of the range and variety of projects engineers in this discipline

take on. We look forward to having our faculty and students work with them at the Parkview Campus."

FTC&H currently has Michigan offices in Grand Rapids, Kalamazoo, Lansing and Farmington Hills and a staff of more than 275 engineers, scientists, architects, surveyors and other professionals. Its Kalamazoo office, which currently is located in the city's Haymarket Building, has grown in recent years from five staff members to more than 20. The new facility at the BTR Park is expected to accommodate the firm's future growth and expansion goals, which include branching out into new markets and offering additional services.



square-foot building to be constructed by Pro Line Opportunity Group LLC. The engineering firm is expected to occupy about 8,500 square feet of the new building, which ultimately will be home to several other businesses in the BTR Park's focus areas of advanced engineering, information technology and the life sciences.

Plans for the new facility, which will be located along U.S. 131, were presented for review by the Kalamazoo Planning Commission at the commission's meeting Oct. 18. Once development plans are approved, site work is expected to begin immediately.

According to Pro Line principals Bob Cook of Richland, Bob Deal of Plainwell and Chris Veneklasen of Grand Rapids, WMU

and city of Kalamazoo officials are working with them to identify additional tenants for the building. The building is expected to be ready for occupancy by its initial tenant in late spring 2002.

The anchor tenant, FTC&H, with its strong civil and environmental engineering track record, is an ideal fit for the BTR Park, says Robert Miller, WMU associate vice president for community outreach. He notes that FTC&H already has played an active role in the development of the park and has completed surveying, bridge design and construction engineering inspection services there. Future

Pro Line, Fishbeck will join growing community

The Pro Line building and its first tenant, Fishbeck, Thompson, Carr & Huber Inc., will join a number of other firms and the College of Engineering and Applied Sciences on the University's 265-acre Parkview Campus and Business Technology and Research Park, located at the intersection of Parkview Avenue and Drake Road.

The development, which in April was designated a Michigan SmartZone, will be home to these facilities:

- The College of Engineering and Applied Sciences' 343,000-square-foot building, scheduled for occupancy in summer 2003
- The Paper and Printing Pilot Plants, a 50,000-square-foot building scheduled for completion in summer 2002

- The Energy Resource Center, being built by Armstrong Services Inc. and set for completion in winter 2002

- Richard-Allan Scientific Inc., a medical diagnostic products and instrument firm, with a 120,000-square-foot building scheduled for completion in spring 2002

- Fluid Process Equipment Inc., an engineering firm that specializes in fluid-handling systems, with a 25,000-square-foot building scheduled for completion in fall 2002

- A business incubator, the Southwest Michigan Innovation Center, which will be completed in fall 2002 and house several companies, including two life science firms, Ann Arbor-based Esperion Therapeutics Inc. and Chicago-based NephRx Corp.

Sculpture Tour introduces six new works by nationally known artists

Six new works have been added to the University's critically acclaimed Sculpture Tour. The new works were installed over the summer and join the tour's existing 12 pieces.

"I am excited about the new additions," says Carol Rhodes, art. "We have some really wonderful pieces and they are all very different from what we have had in many ways."

Among the new additions is a piece by Luis Jimenez, a nationally recognized artist from New Mexico. Jimenez, who teaches at the University of Texas at Houston, was an artist-in-residence in the Department of Art in March, making two large lithographs in University printmaking studios under the direction of Curtis Rhodes, art. Jimenez collaborated with students and master printer Michael Sims, a 1969 alum-

nus. His sculpture titled "Mesteno" is located near the Gilmore Theatre complex.

"It's on the same par as having a piece by Bob Stackhouse, another artist of very national stature, on the tour," Rhodes says.

Pieces by Ed Shay and Shaun Cassidy also have been added to the tour. The works come to WMU after being on exhibit at the Decordova Museum and Sculpture Park in Massachusetts, a well-known and highly respected venue, Rhodes says. Shay's piece "Skyscraper with Crutches" is near Waldo Library, while Cassidy's "Dark Stance" can be seen near Miller Auditorium.

Rounding out the new pieces are Lee Collett's "Tower at 4:00 A.M." in the third floor atrium of Sangren Hall, Dora Natella's "Gaia" on the south lawn of Sangren Hall and Terry Thommes' "Incoming/Outgo-

ing" between the Lee Honors College and Rood Hall.

Natella and Thommes are both WMU graduates, with Natella getting her master's degree in 1986 and Thommes earning a bachelor's degree in 1978.

"Something we're always interested in showcasing is students who have studied here and have gone on to make it," Rhodes says. "They are both very successful artists."

Now nearly 10 years old, the WMU Sculpture Tour is not only one of oldest-running sculpture tours in the nation, it has become one of the more-recognized tours of its kind, Rhodes says.

Additional information is available at this Web site: <www.wmich.edu/art/exhibitions/exhibitions/>. A full-color catalog will be available in early January.

Around the Campus

Astronomy prof examines our knowledge of the cosmos

Using the past to better understand the future exploration of the nature of our universe is the topic that brings a University of Illinois astronomy professor to WMU in November.

James B. Kaler will discuss "Spectacular Astronomy: New Results for a New Millennium" at 8 p.m. Thursday, Nov. 1, in 1104 Rood Hall. Sponsored by the Department of Physics and the Kalamazoo Astronomical Society, the presentation is free and open to the public.

There will also be a special colloquium at 4 p.m. Friday, Nov. 2, in 1110 Rood Hall to address "Two Hundred and Sixteen Years of Planetary Nebula Research." This presentation is more technical in nature, but remains open to the public.

Seminar serves up much more than just food for thought

To help WMU graduates avoid social snafus that might hamper them on the job, Career & Student Employment Services will conduct its fourth annual Etiquette Dinner business seminar from 6 to 9 p.m. today in the Fetzer Center. This year's presentation is on "Business Etiquette: Making a GREAT Impression."

Each fall, about 100 students typically turn out for the special program, which provides participants with bread and butter information about proper business etiquette in social situations.

The seminar portion of the 2001 event will feature Becky Ploeg, West Michigan market team relations leader for Target Corp. Following the seminar, students will sit down to a formal dinner, where they will be able to socialize, network and practice their newly learned skills while dining with employer representatives from Target and the event's nine other co-sponsors.

For more information, contact Anne P. Coristine, Career & Student Employment Services, at 7-2745.

Priestess looks at female deities

She'll be a couple days late for Halloween, but a noted scholar and witch will conjure up some interesting discussion on the feminine side of religion during a visit to the University Friday, Nov. 2.

Nikki Bado-Fralick, assistant professor of American religions at Iowa State University, will be at WMU to present a lecture titled "May I Borrow Your Goddess? The Search for Female Images of Deity" at 7 p.m. in 2304 Sangren Hall. Sponsored by the University's Department of Comparative Religion and the Women's Studies Program, Bado-Fralick's presentation is free and open to the public.

Brod talks about mafia image

What would Vito Corleone think? When Corleone's son-in-law was giving him problems, the Godfather had him whacked. But for Tony Soprano, mafia patriarch in HBO's "The Sopranos," dealing with his own troubled son and other familial problems is a lot easier if he regularly sees his therapist.

The changing image of the organized crime boss, from tough guy to a man one can sympathize with, will be addressed on campus Friday, Nov. 2, by an expert on the profeminist men's movement.

Harry Brod, associate professor of philosophy and humanities and director of the University Honors Program at the University of Northern Iowa, will present two talks during his two-day visit.

The first, at 7 p.m., Thursday, Nov. 1, in the South Ballroom of the Bernhard Center will examine date rape prevention in an address titled "Men of Conscience: What Men Who Stand Against Sexual Assault Stand For."

The following day, Friday, Nov. 2, Brod will explore the transformation of Hollywood's image of the mafia don from Brando's Godfather to today's Tony Soprano. His presentation, "Diminished Masculinity in 'The Sopranos': The Sorry Sons of the Godfather," will be held from noon to 2 p.m. in 210 Bernhard Center.

Czech dean to talk about academic freedom and turmoil

Heightened tensions around the globe have put a spotlight on freedoms many take for granted, and the dean of a Czechoslovakian university will address one of those—academic freedom—in a Monday, Nov. 5, campus presentation.

Petr Kolar, dean of the faculty of philosophy and arts at Charles University in Prague, will address "Academic Freedom in Times of Turmoil" at 7:30 p.m. in 208 Bernhard Center.

Sponsored by the Center for the Study of Ethics in Society, the Haenicke Institute for International and Area Studies, and the College of Arts and Sciences, his presentation is free and open to the public.

Performance artist will explore art as path to social justice

Vocalist, violinist, composer and curator Terry Jenoure will present NAVIGATORS: A Performance Collage, at WMU at 6:30 p.m. Tuesday, Oct. 30, in 2303 Sangren Hall.

The two-hour presentation is based on her recently-released book, "Navigators: African American Musicians, Dancers, and Visual Artists in Academe," which examines the stories of 12 artists who teach at traditionally white colleges and universities. The collage relays their experiences through taped and live vocal and instrumental music, spoken word, movement and visual imagery. It is free and open to the public.

"This performance should be of interest to artists, educators and anyone interested in exploring how the arts may be used to promote dialogue about social justice issues in schools and society," says Morna McDermott, teaching, learning and leadership, whose department is sponsoring the event.

For more details on these events and others, check out the WMU News Web page at www.wmich.edu/wmu/news.

Ed Mayo garners Haworth's teaching innovation award

Ed Mayo, marketing, recently received the annual Faculty Teaching Innovations Award from the Haworth College of Business.

Mayo, who was one of 10 business professors nominated for the honor, received multiple nominations for the award. A group of alumni judges praised Mayo for arming students in his marketing classes with a unique tip sheet that can later be used on the job. As students progress through a course, he asks them to choose favorite techniques, tips or observations from each chapter of their textbook. At the end of the semester, Mayo compiles and laminates each student's list.

"So often, we learn these things in the classroom and think, 'Hey, that's a neat idea,' but when it comes to actually being on the job, it has slipped our mind," says Associate Dean Trudy Verser, Haworth College of Business. "With Ed's technique, each student goes away with a personal little compendium of wisdom that speaks to them. They can post it at their desk, or keep it tucked away in a drawer for occasional reference. It's a great idea that I'm already incorporating into my own classroom."

Paper and printing, physical plant honored for recycling

The Department of Paper and Printing Science and Engineering and Physical Plant are the recipients of the WMU Best Recyclers Award and Most Improved Recyclers Award for 2000-2001, respectively.

Created by WMU Recycling and Waste Reduction Services, these awards honor University departments and offices that have the lowest amount of recyclable material in their trash and those that have shown an improvement from the previous year.

The award is based on a two-day sample taken from all the trash collected from a particular department during the winter semester. Heading up the search for recyclables is award creator Carolyn Noack, recycling and waste reduction coordinator.

"I am looking for anything in the trash that could be recycled; including aluminum cans, glass, plastic and paper," says Noack. "After everything is checked and weighed, I take care of the recyclables and trash."

After randomly selecting 18 departments, Noack searches through their trash bags and determines a ratio of the weight of the materials that could have been recycled in comparison with the total amount of trash thrown out. This year, paper and printing had only 7 and 1/2 percent recyclable materials in its trash. The Physical Plant gained most improved honors for dropping 13 percent in recyclable materials.

Freshman orientation cabaret show goes on the road to Toronto

The National Orientation Directors Association has invited WMU to present its 2001 Freshman Orientation Cabaret Show to nearly 700 association members at its annual conference Nov. 5 in Toronto.

The "Cab Show," as it's informally called, has been providing entertainment to WMU's Freshman Orientation participants since 1974. A parody of college life,

the one-hour show is written and performed by students and produced through a partnership between the Department of Theatre and the Office of Admissions and Orientation.

"As far as we know, there are no other universities in the country who have a long-standing theatrical production incorporated as part of their first-year student orientation programs," says Christopher W. Tremblay, orientation.

The 2001 production depicts six WMU students embarking on the journey of a lifetime—college. During their performance, they make decisions and face their anxieties and fears as they encounter

strange new people and situations.

The show is based on this past summer's Freshman Orientation theme of "Making Your Screen Debut at WMU" and incorporates numerous movie references, from "The Godfather" to "Austin Powers" to "The Sound of Music." Also included are several pieces of music with cleverly rewritten lyrics.

"Year after year, the Cab Show is the highest rated part of Freshman Orientation," says Chairperson D. Terry Williams, theatre. "This attests to the quality of the student performers."

SSEA nominations due

Tomorrow is the deadline for submitting nominations for the fall 2001 semiannual Staff Service Excellence Awards.

Up to 12 staff members may be selected to win a semiannual award with a \$100 prize. The 2001-02 semiannual award winners will be the only employees eligible for the 2001-02 Annual Awards, which include a \$1,000 prize.

All semiannual nominations will be considered solely on the basis of the nomination content, which should include specific examples of service excellence. Nominations may be submitted through Friday, Oct. 26, to Kitty Scheffers, human resources, by memo or e-mail sent to kitty.scheffers@wmich.edu, or by using a nomination form that can be obtained by calling human resources at 7-3620. Winners will be announced in November.

Ready for flu season? Consider getting a shot

The flu season is nearly here, and the Sindecuse Health Center staff encourages members of the University community to stop in for a flu shot. Students in close living quarters also should consider getting vaccinated against meningitis.

In addition to students, faculty, staff and emeriti as well as their eligible family members may get their flu shots on campus. This year, Sindecuse is offering the shots on site at the health center as well as at outreach clinics, one of which is earmarked for retirees and emeriti.

The cost for most people will be \$10. The cost may be charged to an individual's University account or paid in cash or by personal check. Credit cards won't be accepted. Subscribers of PHP/IBA (Southwest Michigan Health Network) will get their flu shots at no cost if they present

their insurance card at the time of service.

The next scheduled outreach clinics for students, faculty and staff are from noon to 6 p.m. Tuesday, Oct. 30, in the lobby of Hoejke Hall and Tuesday, Nov. 27, in the lobby of Eicher/Lefevre Hall. Sign-up sheets will be available at the front desks in both halls.

The clinic for retirees and emeriti will take place from 9 a.m. to 1:30 p.m. Tuesday, Nov. 6, in 3230 Sindecuse Health Center. Those planning to attend should bring their Medicare card.

Flu vaccinations also will be provided to walk-in traffic at Sindecuse between 8 and 11:30 a.m. as well as 1 and 4:30 p.m. Mondays, Tuesdays, Wednesdays and Fridays. On Thursdays, the hours are 9 to 11:30 a.m. and 1 to 4:30 p.m.



EDITOR: Cheryl P. Roland. CONTRIBUTORS: Jeanne Baron, Scott Cray, Jessica English, Marie E. Lee, Thomas A. Myers, Mark E. Schwerin and Gail H. Towns. GRAPHIC DESIGN: Neil Simon.

WESTERN NEWS [USPS 362-210] is published by the Office of University Relations, Walwood Hall, Western Michigan University, 1903 W. Michigan Ave., Kalamazoo, MI 49008-5433, every other week when classes are in session. Periodicals postage paid at Kalamazoo, MI 49008-5165.

POSTMASTER: Send address changes to Western News, Office of University Relations, Western Michigan University, 1903 W. Michigan Ave., Kalamazoo, MI 49008-5433.

WESTERN NEWS is distributed without charge to faculty and staff members, retirees and friends of the University, and is available at several campus locations. Many of the articles also are available online at www.wmich.edu/wmu/news.

DEADLINE: Items to be considered for publication should be submitted to the Office of University Relations by 5 p.m. Friday the week preceding the publication date. Fall 2001 publication dates are: Aug. 30, Sept. 13, Sept. 27, Oct. 11, Oct. 25, Nov. 8 and Nov. 29. Items may be submitted by mail, fax (387-8422) or e-mail (cheryl.roland@wmich.edu).

OFFICES that receive too many copies — or too few copies — are asked to call 387-8400. WMU is an equal opportunity/employer/affirmative action institution.



WESTERN MICHIGAN UNIVERSITY

The following vacancies are currently being posted through the Job Opportunity Program by the Human Resource Services Department. Interested benefits-eligible employees should submit a job opportunity transfer application during the posting period, and may contact a human resource services staff member for assistance in securing these positions.

Employees may call the Applicant Information Service at 7-3669 to hear the weekly Job Opportunity Program postings, seven days a week, 24 hours a day from a Touch Tone phone.

Grade 10 clerical positions are not required to be posted. For persons interested in faculty positions, there are openings in selected fields. A letter of application should be submitted to the appropriate dean or chairperson.

Please call the Applicant Information Service for up-to-date information on the Job Opportunity Program and vacancies available to external applicants.

(R) **Assistant/Associate Professor** (Tenure Track, full year), Re-post, I30/I20, University Libraries, 01/02-2681, 10/23-10/29/01

(R) **Assistant/Associate Professor** (Tenure Track, full year), Re-post, I30/I20, University Libraries, 01/02-2682, 10/23-10/29/01

(R) **Office Coordinator**, 14, School of Social Work, 01/02-2692, 10/23-10/29/01

(R) **Utility Food Worker** (FTE 1.0, 40 hours per week), F0/F1, Bernhard Center Dining Services, 01/02-2695, 10/23-10/29/01

(R) **Utility Food Worker** (FTE .65, 37.50 hours per week), F0/F1, Burnham Dining Services, 01/02-2696, 10/23-10/29/01

(R) **Utility Food Worker** (FTE .65, 37.50 hours per week), F0/F1, Burnham Dining Services, 01/02-2697, 10/23-10/29/01

(R) **Utility Food Worker** (FTE .65, 37.50 hours per week), F0/F1, Valley #1 Dining Services, 01/02-2698, 10/23-10/29/01

(R) **Utility Food Worker** (FTE .65; 37.50 hours per week), F0/F1, Valley #2 Dining Services, 01/02-2699, 10/23-10/29/01

(R) **Utility Food Worker** (FTE .65, 37.50 hours per week), F0/F1, Valley #2 Dining Services, 01/02-2700, 10/23-10/29/01

(R) **Director**, 19, Student Judicial Affairs, 01/02-2701, 10/23-10/29/01

(R) **Director, Information Technology Customer Success**, 22, Office of Information Technology, 01/02-2703, 10/23-10/29/01

(R) **Parking Clerk**, 10, Public Safety, 01/02-2704, 10/23-10/29/01

N = New

R = Replacement

WMU is an Equal Opportunity/Affirmative Action Employer.

Exchange

FOR SALE—1994 Century 14' x 70' mobile home in excellent condition located in West Point Hills/Mattawan mobile home park. Rock bottom price of \$18,000 but will negotiate. For further information, call Julie at 7-3281 or 668-8052.

FOR RENT—Villa at Hilton Head Island, South Carolina. Nov. 24 – Dec. 1. Excellent relaxation on lagoon, 100 yards from the ocean. Wonderful nature walks, shopping. Only \$450 for the week. Call 349-0428.

PSSO gears up for annual holiday poinsettia sale

The Professional Support Staff Organization's annual holiday poinsettia sale is now under way.

The cost per plant is \$9, with four color options available—white, red, marble and jingle bells. Orders may be placed with Kristie Sturmoski, College of Engineering



HER DESK IS 'ORGANIZATION CENTRAL' FOR RESEARCH OFFICE, GRAD COLLEGE
(Photo by Neil Rankin)

On Campus with Pamela Motley

For Pamela Motley, her biggest challenge is her greatest joy.

"I have everybody coming at me, all day long, all the time, for this or that," says the administrative assistant to Donald E. Thompson, vice president for research and dean of the Graduate College. "Somebody needs business cards. Another person has a problem scheduling a meeting. There's someone who needs keys to a meeting room. There's a problem with the telephones or the computers . . ."

Motley came to WMU eight years ago as a temporary worker in grants and contracts. Soon she landed a full-time job in the office. She took her current job in October 1999 and has been busy ever since.

"I handle meetings that Dr. Thompson wants to have set up, and I work with people who want to see him. I manage his calendar and work with community groups involved with the University, as well as grant providers who fund various research projects," Motley says of the constant prioritizing and organizing she does. "It's a lot of juggling, but I enjoy it."

From early-bird breakfast receptions on campus to evening dinner functions in Washington, D.C., it's Motley's job to know where Thompson is and where he needs to go next.

"Everyday is jam packed," she says, returning from a brief interview only to learn that three people are looking for her, two memos have been left in her chair and the phone needs to be answered. "It's challenging, but I like communicating with people."

The Peoria, Ill., native also is a visual artist and is working toward a bachelor's degree in art education.

Human resources

Long-term care meetings today

Monumental Life Insurance Company will introduce its optional long-term care insurance plan for employees and retirees today from 9:30 to 11 a.m. and 3 to 4 p.m. in 210 Bernhard Center.

Monumental's long-term care plan is offered at discount to employees and retirees, as well as their spouses, parents, and parents-in-law. To learn about the coverage and cost, plan to attend one of today's sessions. Representatives from Brokers Health Insurance Services, Inc., the local administrator, will also be available to answer individual questions after the sessions or by appointment made by calling 385-2099. Please note this plan does not replace the optional long-term care plan offered by TIAA-CREF.

Medical, Dependent Care Flexible Spending Accounts explained in meeting series

Faculty and staff are invited to attend a one-hour informational and enrollment meeting for the University's Medical and Dependent Care Flexible Spending Accounts. The meetings will take place in the Bernhard Center at 9 a.m. and 1:30 p.m. on these days and in these locations:

- Tuesday, Oct. 30, Brown & Gold Room
- Thursday, Nov. 1, Room 157
- Wednesday, Nov. 7, Room 210
- Friday, Nov. 9, Room 204

Participants in the Medical Flexible Spending Account save FICA, federal, and state income taxes on out-of-pocket expenses not covered by health insurance, such as deductibles, prescription co-pays, office visits, dental and orthodontia procedures and laser eye surgery. Savings could be as much as 20 to 40 percent of these expenses.

Likewise, participants in the Dependent Care Flexible Spending Account save taxes on eligible dependent care expenses. Those expenses could be for the care of a child under the age of 13, or a disabled spouse, parent or older child.

Enrollment forms for 2002 are due in the Benefits Office no later than Friday, Nov. 30. Questions can be directed to the Benefits Office at 7-3630.

and Applied Sciences, by phone at 7-4910, or by sending an e-mail to <kristie.sturmoski@wmich.edu>.

Orders for the plants will be taken through Friday, Nov. 9. The plants will be available for pickup from 11 a.m. to 7 p.m. Friday, Nov. 30, in 211 Bernhard Center.

Taylor touts United Way's community impact

Arnold Taylor really took this year's Greater Kalamazoo United Way slogan to heart. As WMU's loaned executive to the



Arnold Taylor is WMU's United Way loaned executive. (Photo by Neil Rankin)

United Way, Taylor has been imploring hundreds of people around town to realize that "The Solution is You," while embodying that message in his own work.

Taylor, office of the president, has been working since August with 12 other loaned executives to help the local United Way reach its goal of more than \$9 million. As the community campaign has shifted into high gear, Taylor and his colleagues are spending long hours touting the benefits of the United Way at companies and organizations around the region.

Although initially daunted by the prospect of frequent public presentations, Taylor has risen to the challenge by speaking from the heart.

"Our United Way training last summer began with tours of some of the member agencies," recalls Taylor, who joined the University in 1997 as a systems analyst and

became assistant to the president earlier this year. "Quite honestly, it was a wake-up call for me. I had no idea there were so many people in Kalamazoo who depend on these agencies for a helping hand, whether it's food, clothing or a place to sleep."

Taylor says he was particularly touched by the group's visit to Ministry With Community, a local day shelter, where the loaned executives served lunch to clients. "At Ministry, they serve a hot lunch and dinner, and they have facilities for people to just hang out or simply take a shower. A shower—I'd never considered how something we take for granted every day could make such a difference in someone's life. When I make presentations about the campaign, I tell them what I've seen and how I personally value the work the United Way supports. People recognize and appreciate sincerity."

In addition to promoting the campaign on the WMU campus, Taylor is assigned to Borgess Health Alliance, State Farm Insurance and Kalamazoo County, plus a few dozen smaller organizations. His "loaner" job is a lot like being a sales rep, he says, complete with occasional rejection. Ever the optimist, Taylor sees even a tough assignment as opportunity—a chance to be at his most convincing.

Overall, he's proud to be part of the ambitious community campaign, noting that among agencies in cities its size, the Greater Kalamazoo United Way raises the largest dollar amount per capita in the country.

"There's a tremendous philanthropic spirit in Kalamazoo and on the WMU campus," says Taylor, who will resume his campus duties in mid-November.

Campus United Way drive sets new goal up 5 percent to \$215,250

Campus walls, display cases and mailboxes are filled with promotional materials encouraging the WMU community to participate in the University's annual United Way Campaign.

Running from Oct. 9 to Nov. 2, this year's campaign has a goal of \$215,250, a 5 percent increase over the \$205,000 goal surpassed last year by WMU faculty and staff. The University is the fifth largest contributor to the Greater Kalamazoo United Way, surpassed only by Pharmacia Corp., National City, Stryker Corp. and Borgess Health Alliance. This year's community goal is just over \$9 million.

"The campus community has responded to the tragic events of Sept. 11 with great generosity and heartfelt kindness," says Dawn Vander Ploeg, auxiliary enterprises, who is co-chairperson of the campus campaign together with Charlie DeVries, legislative affairs and community outreach. "At the same time, none of us should forget about the ongoing needs here in our community. We encourage our colleagues to also rally around this cause, closer to home, and we're confident that this campus will once again show its true colors in support of Kalamazoo."

The theme for this year's WMU campaign, which kicked off at an Oct. 9 luncheon, is "Giving to Our Community...The United Way." A victory celebration is planned for Wednesday, Nov. 7.

For more information about the campaign, contact Vander Ploeg at 7-3360 or DeVries at 7-3606.

Ethics center coordinates series of post-performance cancer talks around 'Wit'

Audiences attending the Kalamazoo Civic Theatre's Nov. 1-3 performances of "Wit" will be able to talk with a variety of experts about the ethical issues raised in the play during special post-performance discussions.

Sponsored by the Center for the Study of Ethics in Society, the discussions will feature physicians, a nurse and an ethicist and will be moderated by Shirley Bach, emerita in philosophy. Some members of the cast also will take part in each evening's discussion. The play begins each night at 8 p.m.

in the Suzanne D. Parish Theatre, 426 S. Park St., and the discussions will begin upon the play's conclusion.

"Wit" is a Pulitzer Prize-winning drama about the final six months in the life of an English professor diagnosed with terminal ovarian cancer who reflects on her life, career and treatment experiences. The following panelists will participate in the discussions.

• Thursday, Nov. 1, discussants will include Donald Batts, an internist specializing

in infectious diseases and past medical director of research at Pharmacia Corp.; Thomas Blok, medical director of research at Pharmacia Corp. and member of the West Michigan Cancer Center's Research Ethics Committee; and Juanita Manning, a registered nurse who teaches psychiatric and chronic illness nursing at WMU's Bronson School of Nursing.

• The Friday, Nov. 2, discussion will be led by Sandra Borden, communication, and Marcia Liepman, an oncologist at the

West Michigan Cancer Center.

• Saturday, Nov. 3, discussants will be Morry Edwards, a psychologist with a special interest in treating cancer patients, and Thomas S. Inui, senior scholar at the Fetzter Institute and a former professor at Harvard Medical School.

Tickets to "Wit" can be purchased through the Kalamazoo Civic Theatre, 329 Park St., or by phone at 343-1313. For more information, contact the Center for the Study of Ethics in Society at 7-4397.

Calendar

The master calendar maintained by the Office of University Relations for use in *Western News* is available through WMU's home page on the World Wide Web. Select WMU News and then look for Calendar of Events. You can also link directly to the calendar at <www.wmich.edu/wmu/news/events>.

OCTOBER

10.25 Thursday

Exhibition (final day), "Dawn to Dawn: Spring, Summer, Fall, Winter," handmade paper by Eve Reid, art, Dalton Center Multi-Media Room, 10 a.m.-4 p.m.

Exhibitions (through Oct. 26), "Americanization of Puerto Rico," photography by Bethany Wolbert, Rotunda Gallery; and "Photo Essay on Tecumseh, Michigan" by Allison Manwaring, South Gallery, East Hall, weekdays, 10 a.m.-5 p.m.; reception, Friday, Oct. 26, 5-7 p.m.

Exhibition (through Oct. 31), photography by Barbara Jo Revelle, Gainesville, Fla., Sangren Hall Gallery II, weekdays, 10 a.m.-5 p.m.

Mathematics colloquium, "Temperature-Dependent Vibrations of Bi-Layer Microbeams," David Ross, Rochester Institute of Technology, Alavi Commons, Everett Tower, 4:10 p.m.; refreshments, 3:50 p.m.

*Concert, Tap Dogs, Miller Auditorium, 7:30 p.m.

10.26 Friday

Lecture, "A Cognitive Perspective on Executive Decision Making," Timothy Palmer, management, Keystone Community Bank breakfast lecture series, 2150 Schneider Hall, 7:30 a.m.; for reservations call 7-5050.

Board of Trustees meeting, Connable Board Room, Bernhard Center, 2:30 p.m.

Women's soccer vs. Marshall, WMU Soccer Complex, noon.

Men's soccer vs. Akron, WMU Soccer Complex, 3 p.m.

Lecture, "Mathematics in Photography," David Ross, Rochester Institute of Technology, sponsored by Pi Mu Epsilon and Department of Mathematics, 1104 Rood Hall, 4:10 p.m.

Africa Week panel discussion with faculty experts, sponsored by African Student Association, 204 Bernhard Center, 5 p.m.

*Volleyball vs. Akron, University Arena, 7 p.m.

*Hockey vs. Maine, Lawson Ice Arena, 7 p.m.

*Western Film Society showing (through Oct. 28), "With a Friend Like Harry," The Little Theatre: Friday and Saturday, Oct. 26 and 27, 7 and 9:30 p.m.; Sunday, Oct. 28, 2:30 and 5 p.m.

*Concert, "Judy Collins' Wildflower Festival," with Janis Ian, Richie Havens and Roger McGuinn, Miller Auditorium, 8 p.m.

10.27 Saturday

Prospect Hill cleanup, volunteers needed near East Hall throughout the day beginning at 8 a.m. For more information or to volunteer, call Mary Brooks at 7-3456 or go to <www.wmich.edu/hilltoppers>.

*Africa Week celebrations, "Africa Night," featuring African food, music, dance and fashion show and the African dance troupe "Muntu Motion Dance Theatre," sponsored by African Student Association, Dalton Center, 5 p.m.

*Volleyball vs. Marshall, University Arena, 7 p.m.

*Hockey vs. Maine, Lawson Ice Arena, 7 p.m.

10.28 Sunday

Women's soccer vs. Ohio, WMU Soccer Complex, noon.

Men's soccer vs. Buffalo, WMU Soccer Complex, 3 p.m.

*Concert, Kenny Rogers, Miller Auditorium, 3 and 7 p.m.

*Recital, "Brass Faculty Showcase," brass and other music faculty, Dalton Center Recital Hall, 8 p.m.

10.29 Monday

Exhibitions (through Nov. 2), photography by Jamie Van Buhler, Rotunda Gallery; and ceramics by John Kloote, South Gallery, East Hall, weekdays, 10 a.m.-5 p.m.; reception, Friday, Nov. 2, 5-7 p.m.

Health workshop, "Social Health: Friend, Partner, and Son: The Roles We Play," 2502 Sangren Hall, 5:15-7:15 p.m. For information, contact the Office of Health Promotion at 7-3263.

10.31 Wednesday

Performance, Dalton Convocation Series, Western Brass Quintet, Dalton Center Recital Hall, 1 p.m.

*Performance (through Nov. 4), "Les Miserables," Miller Auditorium: Oct. 31, 7:30 p.m.; Nov. 1, 2 and 7:30 p.m.; Nov. 2, 8 p.m.; Nov. 3, 2 and 8 p.m.; Nov. 4, 2 and 7:30 p.m.

10.31 Wednesday

Concert, University Chamber Orchestra, conductor Chung Park, faculty soloist Lori Sims, Dalton Center Recital Hall, 8 p.m.

NOVEMBER

11.1 Thursday

*E-commerce conference sponsored by Haworth College of Business, advanced registration required, Fetzer Center, 8:30 a.m.

Meeting, Faculty Senate, Fetzer Center, 5 p.m.

Lecture, "Men of Conscience: What Men Who Stand Against Sexual Assault Stand For," Harry Brod, University of Northern Iowa, Bernhard Center, 7 p.m.

*Concert, "Sneak Preview of Gold Company and GCII," Dalton Center Recital Hall, 8 p.m.

11.2 Friday

Lecture, "Diminished Masculinity in 'The Sopranos': The Sorry Sons of the Godfather," Harry Brod, University of Northern Iowa, 210 Bernhard Center, noon.

Lecture, "May I Borrow Your Goddess? The Search for Female Images of Deity," Nikki Bado-Fralick, Iowa State University, 2304 Sangren Hall, 7 p.m.

11.3 Saturday

*Men's basketball vs. Greater Toronto Express (exhibition), University Arena, 2 p.m.

11.4 Sunday

Concert, The Lash, Rock n' Roll/Celtic music, sponsored by Student Entertainment Team, Bronco Mall Center Stage, 6:30 p.m.

11.5 Monday

Exhibitions (through Nov. 9), ceramics by Andrew Gavenda, Rotunda Gallery; and paintings by Greg McChesney, South Gallery, East Hall, weekdays, 10 a.m.-5 p.m.; reception, Nov. 9, 5-7 p.m.

Workshop, "Spiritual Health: Finding the Meaning in Manhood," 2502 Sangren Hall, 5:15-7:15 p.m. For information, contact the Office of Health Promotion at 7-3263.

Ethics lecture, "Academic Freedom in Times of Turmoil," Petr Kolar, Charles University, Czechoslovakia, 208 Bernhard Center, 7:30 p.m.

10.6 Tuesday

Exhibition (through Nov. 30), printmaking and sculpture by Roberley Bell, Batavia, N.Y., Sangren Hall Gallery II, weekdays, 10 a.m.-5 p.m.

11.7 Wednesday

Safe on Campus orientation session, volunteer support group for gay, lesbian and bisexual students, 157 Bernhard Center, 1 p.m. To register or for more information, contact Wanda Viento at 7-2123 or <wanda.viento@wmich.edu>.

Economics lecture, Werner Sichel Lecture-Seminar Series, "States of the World and the State of Decision Science," Mark J. Machina, University of California-San Diego, 3508 Knauss Hall, 3 p.m.

Native American Heritage Month lecture, "Rediscovering Your Cultural Past," Odawa elder John Bailey, sponsored by the Division of Multicultural Affairs, 2212 Dunbar Hall, 7 p.m.

*Women's basketball vs. Chicago Challengers (exhibition), University Arena, 7 p.m.

11.8 Thursday

Computer science colloquium, "Drawing Finite Directed Graphs and Finite Trees in Maple," Jagadish K. Kurma, computer science, 3301 Friedmann Hall, 4 p.m.; refreshments, 3:45 p.m.

*Miller Movie, "Operation Swordfish," sponsored by CAB, Miller Auditorium, 7 and 9:30 p.m.

Slide lecture, Artist-in-Residence Roberley Bell, 2304 Sangren Hall, 7 p.m.; reception follows in Gallery II.

Ethics lecture, "Are There Objective Values? Human Hope and Randian Objectivism as Answers to Relativism," Joseph Ellin, philosophy, 204 Bernhard Center, 7:30 p.m.

Reading, poet Yusef Komunyakaa, 2302 Sangren Hall, 8:30 p.m.

*Admission charged

Nov. 5 is nomination deadline for WMU's annual service award

Nominations are due Monday, Nov. 5, for the University's 2001 Distinguished Service Award.

The annual award, first given in 1980, recognizes exceptional service by a University employee in one or more of the following areas: service through innovative and effective programs; service in areas that contribute to the growth and stature of the University; and service that extends the impact and presence of the University into the larger community.

Up to two awards are made annually, with the recipients recognized for their achievements with a plaque presentation at the annual Academic Convocation. Each award includes an honorarium of \$1,500 and an adjustment of \$1,000 to the recipient's base salary.

All current, continuing full-time faculty and staff with at least five years of service to WMU are eligible. An individual may receive the award only once.

For information about the award program or to receive information on the nominating process, contact Beth Hoger, business information systems and chairperson of the award committee, at 7-5397.

Tenure approved for 36

Thirty-six faculty members were approved for tenure by the University's Board of Trustees July 6. The tenured appointments were effective with the beginning of the 2001-02 academic year.

The faculty members and their departments, by rank are: Associate professor—E. Brooks Applegate, educational studies; Barbara I. Brotherton, art; John A. Clark, political science; J. Kevin Corder, political science; Kristal E. Ehrhardt, psychology; Tycho K. Fredericks, industrial and manufacturing engineering; William W. Liou, mechanical and aeronautical engineering; John A. Lychner, music; Subra Muralidharan, chemistry; Betty J. Parker, marketing; Paul R. Solomon, art; and Gregory Veeck, geography.

Assistant professor—Osama Abudayyeh, construction engineering, materials engineering and industrial design; Mary Z. Anderson, counselor education and counseling psychology; Peter Bickle, foreign languages and literatures; Michael J. Chiarappa, history; Charles E. Crawford, sociology; Cat L. Crotchett, art; Edward J. Daly III, psychology; Leigh A. Ford, communication; Thomas E. Ford, sociology; M. Arthur Garmon, teaching, learning and leadership; Randle J. Gedeon, University libraries; Miranda H. Haddock, University libraries; Emily Hauptmann, political science; Joseph M. Kayany, communication; Paula D. Kohler, educational studies; Mary D. Lagerwey, nursing; James B. Lewis, health, physical education and recreation; Elena B. Lisovskaya, educational studies; John B. Miller, chemistry; Kathleen Propp, communication; Dewi Qi, paper and printing science and engineering; Silvia Rosbach, biological sciences; Delores D. Walcott, University Counseling and Testing Center; and Xiaojun Wang, Asian and Middle Eastern languages.