



Western Michigan University  
ScholarWorks at WMU

---

Legacy Scout Tickets from Pure Oil Company

---

8-20-2021

## MGRRE\_PureOilScoutTickets\_Lawrence\_1\_na

MGRRE

*Western Michigan University*

Follow this and additional works at: <https://scholarworks.wmich.edu/pure>



Part of the Geology Commons

---

### WMU ScholarWorks Citation

MGRRE, "MGRRE\_PureOilScoutTickets\_Lawrence\_1\_na" (2021). *Legacy Scout Tickets from Pure Oil Company*. 269.

<https://scholarworks.wmich.edu/pure/269>

This Document is brought to you for free and open access via ScholarWorks at WMU. It has been accepted for inclusion in Legacy Scout Tickets from Pure Oil Company by an authorized administrator of ScholarWorks at WMU. See the National Digital Catalogue - Science Base Catalogue for more collections submitted by MGRRE.



---

MGRRE\_PureOilScoutTickets\_Lawrence\_1\_na

API na

Permit Number na

Lease Name Lawrence

Well Number 1

County Arenac

Township 19N

Range 3E

Section 26

2021 DEQ or Pure co\_name Erwin Major

Pure Number 289

Latitude 44.0187108

Longitude -84.0756315

THE PURE OIL COMPANY  
OPERATIONS

Date July 1, 1942 LOCATION REPORT Division Wm. Lawrence A.F.E. No. \_\_\_\_\_

Division Mich. Producing District \_\_\_\_\_ Lease Wm. Lawrence

Acres \_\_\_\_\_ Lease No. \_\_\_\_\_ Elevation \_\_\_\_\_ Well No. 1 (Serial No. 289 \*)

Quadrangle NE SE NW Sec. 26 Twp. 19 N Rge. 3 E Twp. Adams

Survey \_\_\_\_\_ County Arenac State Michigan

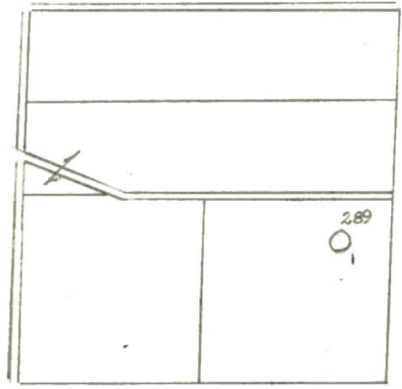
Operator Ervin Major Map Adams Twp, Arenac Co

<u>330</u>	<u>330</u>	Feet from North Line of Lease
<u>330</u>	<u>330</u>	" " East " " "
		" " South " " "
		" " West " " "
		Feet from North Line of Section
<u>330</u>	<u>330</u>	" " East " <u>1/4</u> "
<u>990</u>	<u>990</u>	" " South " " "
		" " West " " "

*Rig*

LEGEND

- ☉ Gas Well
- Oil Well
- ☼ Gas - Distillate Well
- ∅ or ○ Dry Hole
- Dry Showing Oil
- Location
- ☉ Dry Showing Gas
- ⊗ Abandoned Location
- ☼ or ☼ Abandoned Gas Well
- or ● Abandoned Oil Well
- or ○ Input Well



26



Scale \_\_\_\_\_

Remarks: \_\_\_\_\_

Submitted by \_\_\_\_\_ Civil Engineer Approved by \_\_\_\_\_ Division Manager

Approved by \_\_\_\_\_ Vice-President - General Manager

Survey \_\_\_\_\_ County ARENA State MICHIGAN  
 Quadrangle ME 2E 11M Sec. 26 Twp. 19 N Rge. 3 E  
 Acres \_\_\_\_\_ Lease No. \_\_\_\_\_ Elevation \_\_\_\_\_ Well No. I (Serial No. 289)

Date August 12, 1942 No. 289  
 State Mich. County Arenac ~~District~~ Twp. Adams Sec. 26 Twp. 19 N Rge. 3 E  
 Well No. 1 (Serial No.) ~~(Construction)~~ 289 Farm Wm. Lawrence Acres \_\_\_\_\_  
 Operator Ervin Major Information secured ~~from~~ Scouting Department  
 Date well started Not started Date well completed Not completed Elevation 791.7

PRODUCTION RECORD

1st 24 hours natural Location abandoned.  
 2nd 24 hours natural \_\_\_\_\_  
 Date of shot \_\_\_\_\_ No. of quarts \_\_\_\_\_ From \_\_\_\_\_ to \_\_\_\_\_ From \_\_\_\_\_ to \_\_\_\_\_  
 Date of acid \_\_\_\_\_ No. of gallons \_\_\_\_\_  
 1st 24 hours after acid shot \_\_\_\_\_  
 2nd 24 hours after acid shot \_\_\_\_\_

FORMATION AND CASING RECORD

Formation	Top	Bottom	Top Pay	Bottom Pay	Remarks	Casing	
						Size	Set at
					<b>Location abandoned 8-10-42.</b>		

Remarks \_\_\_\_\_  
 \_\_\_\_\_  
 \_\_\_\_\_  
 \_\_\_\_\_

Signed D. C. Shackelford