



Western Michigan University  
ScholarWorks at WMU

---

Legacy Color Lithology Strip Logs

---

5-16-2022

**MGRRE\_LithStripLog\_COVELL 1\_21057014030000**

MGRRE Western Michigan University

Follow this and additional works at: <https://scholarworks.wmich.edu/lith>



Part of the Geology Commons

---

#### **WMU ScholarWorks Citation**

Western Michigan University, MGRRE, "MGRRE\_LithStripLog\_COVELL 1\_21057014030000" (2022). *Legacy Color Lithology Strip Logs*. 273.

<https://scholarworks.wmich.edu/lith/273>

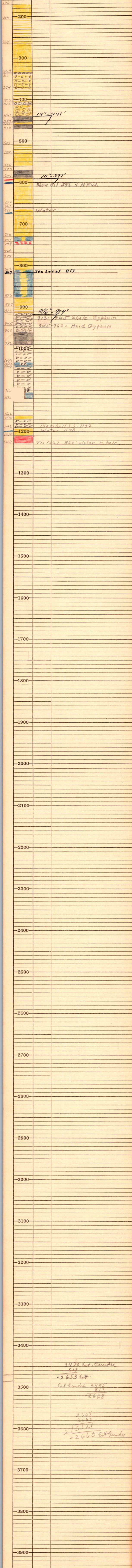
This Document is brought to you for free and open access by ScholarWorks at WMU. It has been accepted for inclusion in Legacy Color Lithology Strip Logs by an authorized administrator of ScholarWorks at WMU. For more information, please contact [wmu-scholarworks@wmich.edu](mailto:wmu-scholarworks@wmich.edu).





P# 1403

STATE <b>MICH.</b>		COMPANY <b>Shell Pet Co.</b>	
COUNTY <b>Gratiot</b>		FARM <b>J. Covell</b>	WELL NO. <b>#1</b>
T. <b>12N</b>	R. <b>4W</b>	COMMENCED <b>11-26-32</b>	
ELEV. <b>817</b>		COMPLETED <b>2-2-33</b>	
PRODUCTION <b>D+H.</b>		REMARKS <b>Record by L.W. Price from Driller's Log.</b>	
		<b>(J.C. Arthurs Prlg. Contr.)</b>	
		<b>(Loc. Cen. SE NW Sec. 15.</b>	
		<b>660' from SL + 660' from EL.</b>	



3470 Est. Sandstone  
817  
- 2653 Est.

Est Sandstone 3485  
817  
- 2668

2468  
2653  
215321  
- 24660 Est Sandstone