



Western Michigan University  
ScholarWorks at WMU

---

Legacy Color Lithology Strip Logs

---

5-16-2022

## MGRRE\_LithStripLog\_NORTHWEST MUTUAL LIFE INSURANCE COMPANY 1\_21057024910000

MGRRE Western Michigan University

Follow this and additional works at: <https://scholarworks.wmich.edu/lith>



Part of the Geology Commons

---

### WMU ScholarWorks Citation

Western Michigan University, MGRRE, "MGRRE\_LithStripLog\_NORTHWEST MUTUAL LIFE INSURANCE COMPANY 1\_21057024910000" (2022). *Legacy Color Lithology Strip Logs*. 278.

<https://scholarworks.wmich.edu/lith/278>

This Document is brought to you for free and open access by ScholarWorks at WMU. It has been accepted for inclusion in Legacy Color Lithology Strip Logs by an authorized administrator of ScholarWorks at WMU. For more information, please contact [wmu-scholarworks@wmich.edu](mailto:wmu-scholarworks@wmich.edu).





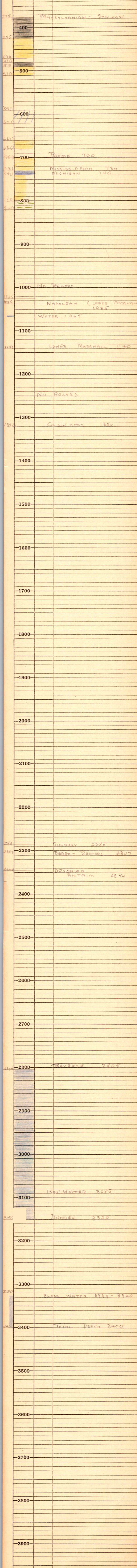
#2491

# SILVER PRAIRIE OIL COMPANY

|                        |           |  |          |
|------------------------|-----------|--|----------|
| STATE<br>Michigan      |           | COMPANY<br>St. Louis Paper & Supply  |          |
| COUNTY<br>Gratiot      |           | FARM<br>NW Mutual Life Ins. Co.  | WELL NO. |
| T.<br>12-N             | R.<br>4-W | COMMENCED  |          |
| COMPLETED<br>10-29-35  |           | REMARKS<br>NE $\frac{1}{4}$ NE $\frac{1}{4}$ SW $\frac{1}{4}$ Sec. 25,<br>T-12-N, R-4-W. 330'<br>from north line and 330'<br>frp, ease line of quarter<br>section. |          |
| ELEV.<br>770.7         |           | Record by Kenneth Gordon<br>from Driller's log   |          |
| PRODUCTION<br>Dry Hole |           |  |          |

### Casing Record:

|                   |      |
|-------------------|------|
| 10"               | 375  |
| 8 $\frac{1}{4}$ " | 820  |
| 6-5/8             | 1336 |
| 5-3/16            | 3293 |



TOTAL DEPTH 3400