



Western Michigan University
ScholarWorks at WMU

Legacy Scout Tickets from Pure Oil Company

8-20-2021

MGRRE_PureOilScoutTickets_BULLOCK, E. J._1_21011097910000

MGRRE

Western Michigan University

Follow this and additional works at: <https://scholarworks.wmich.edu/pure>



Part of the Geology Commons

WMU ScholarWorks Citation

MGRRE, "MGRRE_PureOilScoutTickets_BULLOCK, E. J._1_21011097910000" (2021). *Legacy Scout Tickets from Pure Oil Company*. 283.

<https://scholarworks.wmich.edu/pure/283>

This Document is brought to you for free and open access via ScholarWorks at WMU. It has been accepted for inclusion in Legacy Scout Tickets from Pure Oil Company by an authorized administrator of ScholarWorks at WMU. See the National Digital Catalogue - Science Base Catalogue for more collections submitted by MGRRE.



MGRRE_PureOilScoutTickets_BULLOCK, E. J._1_21011097910000

API 21011097910000

Permit Number 9791

Lease Name BULLOCK, E. J.

Well Number 1

County Arenac

Township 19N

Range 4E

Section 21

2021 DEQ or Pure co_name ARENAC OIL AND GAS CO

Pure Number 304

Latitude 44.03684

Longitude -84.00245

THE PURE OIL COMPANY LOCATION REPORT

Date 9-23-42 A.F.E. No. _____

Division Mich. Producing District _____ Lease E. F. Bullock

Acres _____ Lease No. _____ Elevation _____ Well No. 1 (Serial No. 304)

Quadrangle CNW Sec. 21 Twp. 19 N Rge. 4 E Twp. Deep River

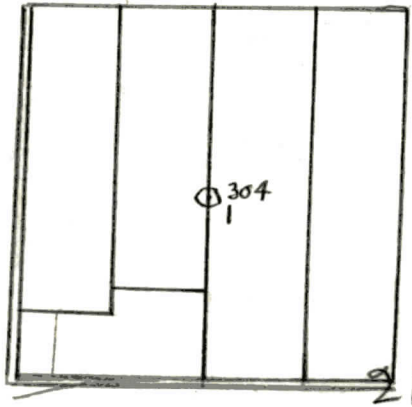
Survey _____ County Arenac State Michigan

Operator Arenac Oil & Gas Company Map Deep River Township, Arenac County

1320	1320	Feet from North Line of Lease
1320	1320	" " East " " "
1320	1320	" " South " " "
1320	1320	" " West <u>1/4</u> " " "
1320	1320	Feet from North Line of Section
1320	1320	" " East " " "
1320	1320	" " South " " "
1320	1320	" " West " " "

Rum

- LEGEND**
- Location
 - ☉ Gas Well
 - Oil Well
 - ☼ Gas - Distillate Well
 - ∅ or ○ Dry Hole
 - or ○ Dry Showing Oil
 - ☉ or ☼ Dry Showing Gas
 - ⊗ Abandoned Location
 - ☉ or ☼ Abandoned Gas Well
 - or ● Abandoned Oil Well
 - or ○ Input Well



Scale _____

Remarks: _____

Submitted by W _____ Approved by _____
Civil Engineer Division Manager

Approved by _____
Vice-President - General Manager

Michigan Producing Division

Date 10-14-42 No. 304
 State Mich. County Arenac ~~Stock~~ Twp. Deep River Sec. 21 Twp. 19 N Rge. 4 E
 Well No. 1 (Serial No.) ~~(Stock No.)~~ 304 Farm E. J. Bullock Acres _____
 Operator Arenac Oil & Gas Company Information secured ~~from~~ ^{By} Scouting Department
 Date well started 9-24-42 Date well completed 10-10-42 Elevation 731.6

PRODUCTION RECORD

Dry Hole

1st 24 hours natural _____
 2nd 24 hours natural _____
 Date of shot _____ No. of quarts _____ From _____ to _____ From _____ to _____
 Date of acid _____ No. of gallons _____
 1st 24 hours after acid _____ shot
 2nd 24 hours after acid _____ shot

FORMATION AND CASING RECORD

Formation	Top	Bottom	Top Pay	Bottom Pay	Remarks	Casing	
						Size	Set at
Marshall	210	360				8-5/8"	147
Coldw. Red Rock	1264	1268				6-5/8"	456
Sunbury	1405					5-3/16"	1432
Berea	1431	1503	S.L.M.		Gauged 200,000 cu. ft. gas 1490-1496. No water.		
Total Depth		1512					

Remarks _____

Signed D. C. Shackelford