



Western Michigan University
ScholarWorks at WMU

Legacy Scout Tickets from Pure Oil Company

8-20-2021

MGRRE_PureOilScoutTickets_BARNES, D. ET
AL_1_21011099070000

MGRRE
Western Michigan University

Follow this and additional works at: <https://scholarworks.wmich.edu/pure>



Part of the Geology Commons

WMU ScholarWorks Citation

MGRRE, "MGRRE_PureOilScoutTickets_BARNES, D. ET AL_1_21011099070000" (2021). *Legacy Scout Tickets from Pure Oil Company*. 287.
<https://scholarworks.wmich.edu/pure/287>

This Document is brought to you for free and open access via ScholarWorks at WMU. It has been accepted for inclusion in Legacy Scout Tickets from Pure Oil Company by an authorized administrator of ScholarWorks at WMU. See the National Digital Catalogue - Science Base Catalogue for more collections submitted by MGRRE.



MGRRE_PureOilScoutTickets_BARNES, D. ET AL_1_21011099070000

API 21011099070000

Permit Number 9907

Lease Name BARNES, D. ET AL

Well Number 1

County Arenac

Township 20N

Range 4E

Section 8

2021 DEQ or Pure co_name ARENAC OIL AND GAS CO

Pure Number 308

Latitude 44.1559

Longitude -84.01018

WELL REPORT—OUTSIDE OPERATIONS

Clayton Field

SERIAL NO. 308

STATE Michigan ~~PEN~~ CO. Arenac

OPERATOR Arenac Oil & Gas Co.

FARM D. Barnes, et al WELL NO. 1

TWP. Clayton S. 8 T. 20N. 4E

LOC. N $\frac{1}{2}$ NE NE

MAP NO. CO-ORD. ELEV.

STATUS Plugged and abandoned 7-11-47

Total Depth 1213'

NORTH

DATE 8-20-47 SCOUT H.J.G.

THE PURE OIL COMPANY

Date 12-23-42 Corrected LOCATION REPORT A.F.E. No. _____

Division Mich. Producing District _____ Lease D. Barnes, et al #1

Acres _____ Lease No. _____ Elevation _____ Well No. 1 (Serial No. 308)

Quadrangle N 1/2 NE NE Sec. 8 Twp. 20 N Rge. 4 E ~~X 1/4 NE NE~~ ~~X 1/4 SE NE~~ Clayton Clayton

Survey _____ County Arenac State Michigan

Operator Arenac Oil & Gas Company Map Clayton Twp - Arenac Co
Clayton Township, Arenac County

Feet from North Line of Lease

1270 1270 " " East " " "

560 560 " " South " " "

50 50 " " West 1/4 "

560 560 Feet from North Line of Section

" " East " " "

" " South " " "

" " West " " "

LEGEND

○ Location

☼ Gas Well

● Oil Well

☼ Gas - Distillate Well

○ or ○ Dry Hole

● Dry Showing Oil

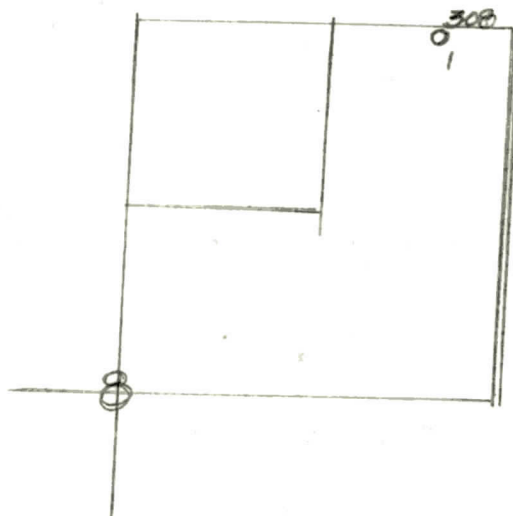
☼ Dry Showing Gas

⊗ Abandoned Location

☼ or ⊗ Abandoned Gas Well

● or ● Abandoned Oil Well

● or ○ Input Well



N



change in location

Remarks: Change in location. Scale _____

Submitted by _____ Civil Engineer Approved by _____ Division Manager

Approved by _____ Vice-President - General Manager

Date December 2, 1942

LOCATION REPORT

A.F.E. No. _____

Division Michigan Producing District _____

Lease D. Barnes, et al

Acres _____ Lease No. _____

Elevation _____

Well No. 1

(Serial No. 308)

Quadrangle N $\frac{1}{2}$ NE NE

Sec. 8

Twp. 20 N

Rge. 4 E

Twp. Clayton

Survey _____

County Arenac

State Michigan

Operator Arenac Oil & Gas Company

Map Clayton Township, Arenac County

Feet from North Line of Lease

030' 660

1270' 1270

" " East " " "

" " South " " "

" " West " " "

Feet from North Line of Section

50' 50

660' 660

" " East " " "

" " South " " "

" " West " " "

LEGEND

○ Location

☀ Gas Well

● Oil Well

☀ Gas - Distillate Well

○ or ○ Dry Hole

● Dry Showing Oil

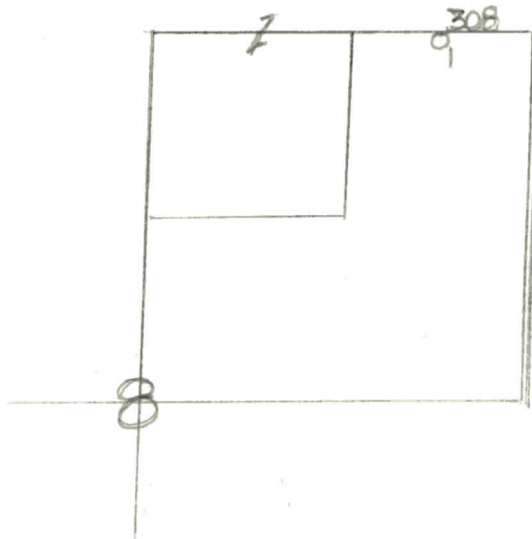
☀ Dry Showing Gas

○ Abandoned Location

☀ or ☀ Abandoned Gas Well

● or ● Abandoned Oil Well

● or ○ Input Well



Scale _____

Remarks: _____

Submitted by _____

Civil Engineer

Approved by _____

Division Manager

Approved by _____

Vice-President - General Manager

Date **December 23, 1942**

No. 308

State Michigan County Arenac ~~Dixie~~ Twp. Clayton Sec. 8 Twp. 20 N Rge. 4 E

Well No. 1 (Serial No.) 308 Farm D. Barnes, et al Acres

Operator **Arenac Oil & Gas Company** Information secured ~~from~~^{By} **Scouting Department**

Date well started 12-9-42 Date well completed 12-19-42 Elevation 830.0

PRODUCTION RECORD

1st 24 hours natural 2,880,000 Cu. Ft.

2nd 24 hours natural

[illegible]

Date of acid No. of gallons

shot
1st 24 hours after acid

shot
2nd 24 hours after acid

FORMATION AND CASING RECORD

[illegible]

Remarks.....

Signed **D. C. Shackelford**