



Western Michigan University  
ScholarWorks at WMU

---

Legacy Scout Tickets from Pure Oil Company

---

8-20-2021

**MGRRE\_PureOilScoutTickets\_BUFFALO LAND  
COMPANY\_1\_21011101680000**

MGRRE

*Western Michigan University*

Follow this and additional works at: <https://scholarworks.wmich.edu/pure>



Part of the Geology Commons

---

#### **WMU ScholarWorks Citation**

MGRRE, "MGRRE\_PureOilScoutTickets\_BUFFALO LAND COMPANY\_1\_21011101680000" (2021). *Legacy Scout Tickets from Pure Oil Company*. 291.

<https://scholarworks.wmich.edu/pure/291>

This Document is brought to you for free and open access via ScholarWorks at WMU. It has been accepted for inclusion in Legacy Scout Tickets from Pure Oil Company by an authorized administrator of ScholarWorks at WMU. See the National Digital Catalogue - Science Base Catalogue for more collections submitted by MGRRE.



---

**MGRRE\_PureOilScoutTickets\_BUFFALO LAND COMPANY\_1\_21011101680000**

API 21011101680000

Permit Number 10168

Lease Name BUFFALO LAND COMPANY

Well Number 1

County Arenac

Township 18N

Range 4E

Section 23

2021 DEQ or Pure co\_name TEATER C W

Pure Number 312

Latitude 43.94007

Longitude -83.94907

THE PURE OIL COMPANY

LOCATION REPORT

Date June 23, 1943 A.F.E. No. \_\_\_\_\_

Division Michigan Producing District \_\_\_\_\_ Lease Buffalo Land Company

Acres \_\_\_\_\_ Lease No. \_\_\_\_\_ Elevation \_\_\_\_\_ Well No. 1 (Serial No. 312)

Quadrangle C S 1/2 SE SE Sec. 23 Twp. 18 N Rge. 4 E Twp. Standish

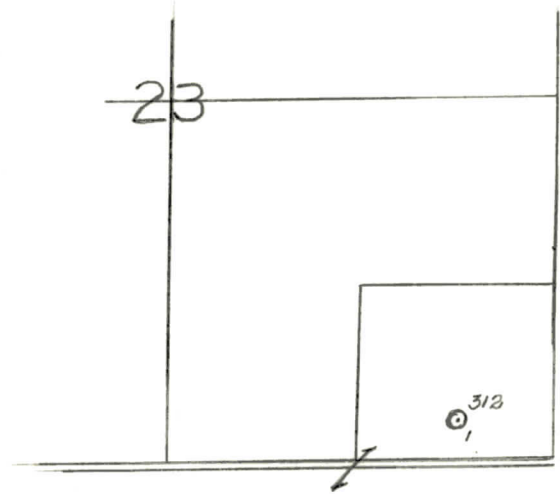
Survey \_\_\_\_\_ County Arenac State Michigan

Operator Charles W. Teater Map Standish Twp - Arenac Co  
Standish Township, Arenac County

Feet from North Line of Lease	
<u>660</u> <u>660</u>	" " East " " "
<u>330</u> <u>330</u>	" " South " " "
	" " West " " "
Feet from North Line of Section	
<u>660</u> <u>660</u>	" " East " <u>1/4</u> "
<u>330</u> <u>330</u>	" " South " " "
	" " West " " "

LEGEND

- Location
- ☀ Gas Well
- Oil Well
- ☀ Gas - Distillate Well
- ⊘ or ○ Dry Hole
- Dry Showing Oil
- ☀ Dry Showing Gas
- ⊘ Abandoned Location
- ☀ or ☀ Abandoned Gas Well
- or ● Abandoned Oil Well
- or ○ Input Well



Scale \_\_\_\_\_

Remarks: \_\_\_\_\_  
 \_\_\_\_\_  
 \_\_\_\_\_

Submitted by \_\_\_\_\_ Civil Engineer Approved by \_\_\_\_\_ Division Manager

Approved by \_\_\_\_\_ Vice-President - General Manager



Michigan Producing Division

T

Date September 9, 1943 No. 312  
 State Mich. County Arenac ~~District~~ Twp. Standish Sec. 23 Twp. 18 N Rge. 4 E  
 Well No. 1 (Serial No.) ~~(County No.)~~ 312 Farm Buffalo Land Co. Acres \_\_\_\_\_  
 Operator Charles W. Teater Information secured ~~from~~ Scouting Department By \_\_\_\_\_  
 Date well started 6-21-43 Date well completed 9-2-43 Elevation 629.3

PRODUCTION RECORD

1st 24 hours natural Dry Hole  
 2nd 24 hours natural \_\_\_\_\_  
 Date of shot \_\_\_\_\_ No. of quarts \_\_\_\_\_ From \_\_\_\_\_ to \_\_\_\_\_ From \_\_\_\_\_ to \_\_\_\_\_  
 Date of acid \_\_\_\_\_ No. of gallons \_\_\_\_\_  
 shot \_\_\_\_\_  
 1st 24 hours after acid \_\_\_\_\_  
 shot \_\_\_\_\_  
 2nd 24 hours after acid \_\_\_\_\_

FORMATION AND CASING RECORD

Formation	Top	Bottom	Top Pay	Bottom Pay	Remarks	Casing	
						Size	Set at
Marshall	218	350				10"	41
Coldw. Red Rock	1205					8-1/4"	619
Sunbury	1376	1408	SLM			6-5/8"	2700
Berea	1408	SLM			Salt water 1436 to 1446 SLM.	5-3/16"	3942 SLM
Antrim	1565						
Traverse Lime	1895	CTM			Scum oil about 1905-1910.		
					Show free oil 2025 to 2040.		
Dundee	2700	SLM			H.F.W. 2950.		
					Salt 3256-3285.		
					S.W. 3535-3550 ?		
Total Depth		4250			Salt 3680-3690; 3700-3703.		

Remarks No water below 3942. 1465' CTM equals 1461' SLM; 2692' CTM equals 2700' SLM.

Signed D. C. Shackelford