



# Western NEWS

JULY 12, 2001

volume 27, number 20

[www.wmich.edu/wmu/news](http://www.wmich.edu/wmu/news)

## Trustees approve increase in tuition, continuing ed fees

The WMU Board of Trustees has approved a tuition and fee increase of slightly more than \$200 per semester over last fall's rates. The action, taken at the board's July 6 meeting, is effective with the start of the fall 2001 semester.

"It is important that we continue to be a university of choice, and one way we can do that is by keeping tuition at the lowest possible rate so that capable students, regardless of circumstance, have access to this top-100 public university," President Elson S. Floyd told the board. "This year, it will be more difficult than in the past to maintain our affordability, due to the reduced state revenues and our increased operating costs."

The trustees' approval of the rate increase is based on an anticipated increase in state funding of approximately 1.5 percent for the coming year, compared to an increase of 6.3 percent in 2000-01.

The new tuition and fee schedule means that for the fall semester of the 2001-02 academic year, a full-time, in-state freshman student will pay approximately \$2,250 in tuition and fees for the state average course load of 15 credit hours. This is a \$203 increase over the fall 2000-01 semester tuition and fee rate of \$2,047.

"We are proud of the fact that our tuition and fees will continue to be the second lowest of the state's four major research universities," remarked Floyd. He also noted that for those students who will be most impacted by the new tuition rate, the University will continue its practice of ensuring that additional financial aid funds are available.

In a related action, the board approved an increase of \$20 per credit hour for the differential fee students in the University's continuing education programs pay. The new hourly differential fee beginning with the fall 2001 semester will be \$60 per credit hour.

## Annual gifts to WMU set new record

For the second consecutive year, the University set a new record for private gifts, with \$18.4 million received during the fiscal year that ended June 30.

The previous one-year record was \$17.5 million, set just one year ago. Prior to that, the largest one-year total in gifts to WMU was \$12.5 million, during the 1995-96 fiscal year.

"We are very gratified to see this remarkable growth in private gifts," said President Elson S. Floyd. "It is a testament to the important work being done at our University."

"We owe a great deal to the loyal alumni and friends who have made these record totals possible," Floyd continued. "It is also important for us to recognize that this level of support does not come to an institution overnight. In some cases, these gifts reflect a lifelong relationship between the donor and the University."

According to a report presented to the Board of Trustees at its July 6 meeting, \$18,434,634 in gifts was received during the 2000-01 fiscal year, which ended June 30. In addition to a record in total gifts, the University also set a new record in cash gifts of \$16,285,747. That figure represents an increase of more than \$3 million or 22 percent over the previous one-year record for cash gifts.

Private support has grown dramatically since the creation of the WMU Foundation in 1976 according to Bud Bender, vice president for development, who also serves as executive director and secretary for the foundation. Bender says that private gifts totaled about \$1 million in 1976-77, the foundation's first year. The total increased to about \$3 million in 1980-81, to \$11 million in 1990-91, and now to more than \$18 million in 2000-01.

Continued on page 4



### 'SCRUTINEERED'—

WMU's Sunseeker 295 entry in the American Solar Challenge cross-country solar car race was carefully scrutinized by ASC officials July 9 in the Miller Auditorium parking ramp. The check was part of "scrutineering" at the WMU Formula Sun Grand Prix, a weeklong final qualifying event for the solar race held on the WMU campus and at GingerMan Raceway in South Haven, Mich. Sunseeker and 32 other entries in the race will begin their trek along Route 66 Sunday, July 15, in Chicago and conclude 10 days and 2,300 miles later in Claremont, Calif. Follow the race online with daily updates posted at [www.wmich.edu/sunseeker](http://www.wmich.edu/sunseeker).

(Photo by Neil Simon)

# Four retirements accepted by BOT

The retirements of one faculty member and four staff members were approved by the Board of Trustees at its July 6 meeting. Trustees also accepted the resignations of four faculty members.

The faculty member who is retiring is doing so with emeritus status. His name, years of continuous

service and effective date of retirement is Dr. Jeffrey B. Gardiner, associate professor of foreign languages and literatures, 31-1/2 years, effective Jan. 2, 2002.

The staff members retiring are: Clara M. Bizzell, a custodian in Physical Plant-Building Custodial and Support Services, 17-1/2 years, effective Aug. 31, 2001; Robert E. Haner, a painter in Physical Plant-Maintenance Services, 31-1/2 years, effective June 30, 2001; David A. Mahieu, a supervisor in Physical Plant-Maintenance Services, 22-1/2 years, effective Sept. 30, 2001; and Thomas K. Pfau, a laboratory assistant in the Department of Chemistry, 30-1/2 years, effective July 31, 2001.

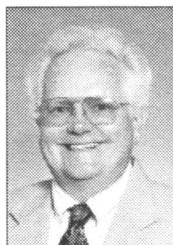
The faculty members resigning are: Dr. Robert S. Hafner, associate professor of science studies, effective Aug. 5, 2001; Dr. Johnathon Monaghan, associate professor



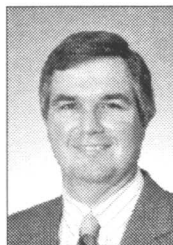
Bizzell



Haner



Mahieu



Pfau

of history, effective Aug. 5, 2001; Dr. Theresa M. O'Halloran, assistant professor of counselor education and counseling psychology, effective Aug. 10, 2001; and Dr. Camille K. Vande Berg, associate professor of foreign languages and literatures, effective Aug. 5, 2001.

## Digital stories on display at Sprau event tomorrow

Participants in the first-ever digital storytelling institute held at WMU this week will present the fruits of their labors during a special celebration at 3 p.m. Friday, July 13, on the 10th floor of Sprau Tower.

Digital storytelling combines traditional narrative with multimedia technology to create stories for dissemination on the World Wide Web and through other electronic media. Just one of many innovations in the burgeoning world of e-publishing, digital storytelling also offers new methods for the teaching of reading and writing.

The Third Coast Writing Project at WMU is conducting the Institute for Storytelling and Writing through Digital Media July 9-13. The institute has attracted 13 Southwest Michigan elementary and secondary school teachers who are learning to create digital stories as well as how to use these techniques to improve their teaching. Caleb Paull of the Center for Digital Storytelling in Berkeley, Calif., and Corey Harbaugh, a high school English teacher from Gobles, Mich., are directing the institute.

Stories created by institute participants will be presented in the July 13 celebration of the workshop's completion.

## Hydrologist He named national research associate for year

A WMU hydrologist has received a Senior Research Associateship Award from the National Research Council that will allow him to spend the 2001-02 year working on a model to improve water resource management in the Great Lakes.

Chansheng He, geography, was one of 300 researchers chosen for the NRC's associateship program for this year. A national competition drawing nearly 1,000 applicants annually, the program awards outstanding scientists the opportunity to conduct their research at one of several federal laboratories or research organizations.

He will receive a \$47,000 stipend to conduct research with the National Oceanic Atmospheric Administration's Great Lake's Environmental Research Laboratory in Ann Arbor, Mich.

He was granted the award based on his proposal to develop a new model that considers the effects of soil, topography and vegetation on watershed run-off in the Great Lakes basin. His work will expand upon a model developed by Thomas Croley, a senior hydrologist at the GLERL, that simulates the water levels and hydrological processes in the Great Lakes Basin. Croley will serve as He's research advisor for the project.

## VanHoeven's teaching lauded

A recently retired WMU communication professor has been chosen as the recipient of the National Communication Association's 2001 Lifetime Teaching Excellence Award.

Shirley A. VanHoeven, emerita of communication, will receive the award in Atlanta in November 2001. The NCA, the nation's oldest and largest organization promoting communication scholarship and education, gives the award to retired college and university faculty members who have demonstrated a lifetime dedication to distinguished teaching. NCA has more than 7,000 members.

VanHoeven began her university teaching career at WMU in 1970 as an instructor in communication. During her nearly three decades at WMU, she taught courses in interpersonal communication, conflict management, organizational culture and power and leadership at both the undergraduate and graduate levels.



volume 27  
number 20

EDITOR: Cheryl P. Roland. CONTRIBUTORS: Jeanne Baron, Jessica English, Marie E. Lee, Lisa Lueking, Thomas A. Myers and Mark E. Schwerin. GRAPHIC DESIGN: Neil Simon.

WESTERN NEWS (USPS 362-210) is published by the Office of University Relations, Walwood Hall, Western Michigan University, 1903 W. Michigan Ave., Kalamazoo, MI 49008-5433, every other week when classes are in session. Periodicals postage paid at Kalamazoo, MI 49008-5165.

POSTMASTER: Send address changes to Western News, Office of University Relations, Western Michigan University, 1903 W. Michigan Ave., Kalamazoo, MI 49008-5433.

WESTERN NEWS is distributed without charge to faculty and staff members, retirees and friends of the University, and is available at several campus locations. Many of the articles also are available online at [www.wmich.edu/wmu/news](http://www.wmich.edu/wmu/news).

DEADLINE: Items to be considered for publication should be submitted to the Office of University Relations by 5 p.m. Friday the week preceding the publication date. Spring and summer 2001 publication dates are: May 3, May 17, May 31, June 14, June 28, July 12, July 26 and Aug. 9. Items may be submitted by mail, fax (387-8422) or e-mail ([cheryl.roland@wmich.edu](mailto:cheryl.roland@wmich.edu)).

OFFICES that receive too many copies — or too few copies — are asked to call 387-8400. WMU is an equal opportunity/employer/affirmative action institution.



WESTERN MICHIGAN UNIVERSITY

## Meyer heads center

Jeanette M. Meyer has joined the Geriatric Assessment Center at WMU Unified Clinics as its new medical director.

Meyer has been practicing in the Kalamazoo area for many years, specializing in internal medicine and geriatrics. She has extensive experience working with the multiple problems and concerns pertaining to older patients.



Meyer

Meyer completed her medical training at the University of Minnesota and Wayne State University, and her residency at the Mayo Clinic. She also completed a Geriatrics Fellowship at the Mayo Clinic.

The Geriatric Assessment Center, part of the state-funded Southwest Michigan Health Professions Education Initiative, was developed through a collaborative effort involving the faculty and clinical resources of WMU, Michigan State University/Kalamazoo Center for Medical Studies and Ferris State University to serve the special needs of older people in the community through coordinated interdisciplinary care. Services at the GAC are designed to provide older patients and their doctors with a thorough and expert analysis of the impact of aging issues on medical problems, use of medications, in-home support and care and daily functioning.

## Faculty Senate changes OK'd

The University's Board of Trustees, acting at its July 6 meeting, approved a series of amendments to the constitution of the Faculty Senate.

The amendments establish a new beginning and end to the Senate's year, change attendance requirements, change the term of senate office from four to six years and eliminate text that conflicts with the senate's current 30-day review process. The changes also will result in the addition of the University's vice president for business and finance as a permanent member of the senate's Technology and Operations Council.

Board approval is the final step in the process. The amendments already have been approved by a majority vote of the Senate and by President Elson S. Floyd.

## Jobs

The following vacancies are currently being posted through the Job Opportunity Program by the Human Resource Services Department. Interested benefits-eligible employees should submit a job opportunity transfer application during the posting period, and may contact a human resource services staff member for assistance in securing these positions.

Employees may call the Applicant Information Service at 7-3669 to hear the weekly Job Opportunity Program postings, seven days a week, 24 hours a day from a Touch Tone phone.

Grade 10 clerical positions are not required to be posted. For persons interested in faculty positions, there are openings in selected fields. A letter of application should be submitted to the appropriate dean or chairperson.

Please call the Applicant Information Service at 7-3669 for up-to-date information on the Job Opportunity Program and vacancies available to external applicants.

(N) **Flight Instructor** (term ends 6/30/02), 16, College of Aviation, 01/02-2471, 7/10-7/16/01

(N) **Flight Instructor** (term ends 6/30/02), 16, College of Aviation, 01/02-2472, 7/10-7/16/01

## Exchange

**FOR SALE**—Home with two extra lots, 10 minutes from campus, Milham and 12th Street area, Portage Schools; 4 bedrooms, 2 and 1/2 baths; kitchen and bath renovated, along with new furnace and appliances in 1998 and new roof in 1996; \$159,900; call Michele Moe at 7-5085 or 371-1097 for more information.

(N) **Flight Instructor** (term ends 6/30/02), 16, College of Aviation, 01/02-2473, 7/10-7/16/01

(R) **Academic Career Specialist** (term ends 6/30/02), D50, College of Aviation, 01/02-2476, 7/10-7/16/01

(R) **Academic Career Specialist** (term ends 6/30/02), D50, College of Aviation, 01/02-2477, 7/10-7/16/01

(R) **Academic Career Specialist** (term ends 6/30/02), D50, College of Aviation, 01/02-2478, 7/10-7/16/01

(R) **Assistant Professor** (tenure track, academic year), I30, School of Public Affairs and Administration 1/02-2479, 7/10-7/16/01

(N) **Operator** (FTE .60, 24 hours per week; Friday, Saturday and Sunday only), 13, Information Technology, 01/02-2481, 7/10-7/16/01

(N) **Operator** (FTE .60, 24 hours per week; Friday, Saturday and Sunday only), 13, Information Technology, 01/02-2482, 7/10-7/16/01

(N) **Operator** (FTE .60, 24 hours per week; Friday, Saturday and Sunday only), 13, Information Technology, 01/02-2483, 7/10-7/16/01

(R) **Office Associate**, 13, Foreign Languages and Literatures, 01/02-2484, 7/10-7/16/01

(R) **Office Coordinator**, 14, Computer Science, 01/02-2485, 7/10-7/16/01

(R) **Parking Enforcement Officer**, 10, Public Safety, 01/02-2486, 7/10-7/16/01

(R) **Associate Director**, 18, Residence Life, 01/02-2487, 7/10-7/16/01

N=New

R = Replacement

WMU is an Equal Opportunity/Affirmative Action Employer.

## Estimated budget for 2001-02 tops \$241 million

At its July 6 meeting, the University's Board of Trustees approved an estimated 2001-02 general fund operating budget of \$241,531,740.

The new budget for the fiscal year that began July 1 includes an expected \$125.7 million in state appropriations and \$111.3 million in tuition revenue. The estimates are based on a state appropriations increase of 1.5 percent and new tuition rates set by trustees at the same meeting.

The budget includes expected compensation increases of just over \$7 million, along with a nearly 15 percent, or \$1.39

million, projected increase in utilities costs. Funds budgeted for student financial aid will increase 8.5 percent, or \$1.5 million.

The estimated budget projects target reductions of more than \$2.6 million to be identified during the coming fiscal year.

In procedural action, trustees approved the University's final 2000-01 budget of \$245,887,720, up \$19.4 million from last September's estimated budget of \$226,444,022. At the end of each fiscal year, trustees approve actual revenue and expenses, which historically differ from the original estimate.

# Board gives approval to four academic appointments

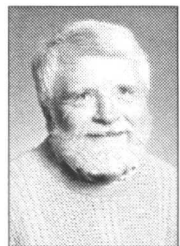
The appointments of an associate dean, two department chairpersons and an academic program director were among personnel



Enyedi



Leja



Ponchillia



Wilson

moves approved by the WMU Board of Trustees at its July 6 meeting.

The board approved the appointments of Alexander J. Enyedi as interim chairperson of biological sciences, effective July 1 through June 30, 2002; James A. Leja for a new term as associate dean of the College of Health and Human Services, effective July 1; Paul E. Ponchillia as professor and chairperson of blind rehabilitation, effective July 1, 2001; and Benjamin C. Wilson as professor and director of the Africana Studies Program, effective July 1 through June 30, 2004.

**Enyedi**, a faculty member since 1993, is a specialist in plant physiology and an active researcher who has received numerous grants and published more than 30 abstracts and journal articles on his work. He was the recipient of a 2000 WMU Alumni Teaching Excellence Award. Enyedi came to the campus from Rutgers University's Center for Agricultural Molecular Biology, where he served as a post-doctoral research associate from 1991 to 1993.

**Leja**, who is currently serving as associate dean for graduate and international education in the College of Health and Human Services, was first appointed to the post in 1997 and reappointed in 1999. He has been a faculty member in WMU's Department of Blind Rehabilitation since 1986.

He served as a Fulbright Scholar/Lecturer in Taiwan for the 1994-95 academic year after previously serving two stints in that nation as a visiting professor.

**Ponchillia**, who has been serving as interim chairperson of his department since last July, has been a WMU faculty member since 1978. Prior to joining the faculty, he taught at Northern Illinois University and was a rehabilitation teacher in Indiana's Elkhart County. Ponchillia is the co-author of "The Foundations of Rehabilitation in Teaching with Persons Who are Blind or Visually Impaired," and is the organizer of sports and art camps for youths with visual impairments.

**Wilson**, a faculty member since 1975, will head the Africana Studies Program created by the Board of Trustees May 30. Prior to coming to WMU, he was a faculty member at General Motors Institute, now Kettering University, and a graduate assistant at Michigan State University. His research over the years has covered such topics as the black experience in rural Michigan and Idlewild, the famed black resort community in West Michigan. He has traveled extensively, visiting such African nations as Zimbabwe, South Africa and Ghana in the past decade. At WMU, he founded and directs an annual music minifestival that explores music styles ranging from jazz and hip hop to gospel and blues.

In related action, the board also approved a series of leaves for faculty members. Professional development leaves were approved for Dina Bangdel, art, whose leave began July 1 and lasts through Aug. 4, 2002; and Ruth E. Noblett, business information systems, whose leave will begin Aug. 6, 2001 and will last through Aug. 4, 2002.

A one-year personal leave of absence was approved for Gwendolyn Etter-Lewis, English. She will go on leave Aug. 15, 2001, through Aug. 15, 2002. Sabbatical leaves also were approved for Dr. J. Kevin Corder, political science, for the fall 2001 semester; and for Delores D. Walcott, University Counseling and Testing Center, for the 2001-02 academic year.

## Gifts

"The past two record years have demonstrated the wisdom of Dr. John Bernhard (former WMU president) and the volunteers who incorporated the WMU Foundation 25 years ago," said Bender. "This (year's record total) is a great silver anniversary present for the foundation, and

the volunteers who have served on the foundation board over the past 25 years deserve the lion's share of the credit."

Among the larger gifts from May and June reported to the Board of Trustees was \$300,000 given anonymously to create an endowment for women's intercollegiate

sports. The endowment will be named in honor of Jean E. Friedel of Kalamazoo, emerita of physical education. Friedel coached seven women's sports at WMU during her 29-year tenure, which ran from 1960 to 1989.

Continued from page 1

## Calendar

The master calendar maintained by the Office of University Relations for use in *Western News* is available through WMU's home page on the World Wide Web. Select WMU News and then look for Calendar of Events. You can also link directly to the calendar at <[www.wmich.edu/wmu/news/events](http://www.wmich.edu/wmu/news/events)>.

### JULY

#### 7.13 Friday

\*Film showing (through July 15), Kalamazoo Film Society's "The Gleaners and I," the Little Theatre: Friday and Saturday, July 13-14, 7 p.m. and 9:30 p.m.; Sunday, July 15, 2:30 p.m. and 5 p.m.

\*Admission charged

#### 7.20 Friday

Concert, School of Music Summer Music Camp, Miller Auditorium, 7:30 p.m.

#### 7.21 Saturday

Concert, School of Music Summer Music Camp, Miller Auditorium, 1:30 p.m.