



Western Michigan University  
ScholarWorks at WMU

---

Legacy Scout Tickets from Pure Oil Company

---

8-20-2021

**MGRRE\_PureOilScoutTickets\_GOODROE, GLENA  
(COMM)\_1\_21011102800000**

MGRRE

*Western Michigan University*

Follow this and additional works at: <https://scholarworks.wmich.edu/pure>



Part of the Geology Commons

---

#### **WMU ScholarWorks Citation**

MGRRE, "MGRRE\_PureOilScoutTickets\_GOODROE, GLENA (COMM)\_1\_21011102800000" (2021). *Legacy Scout Tickets from Pure Oil Company*. 295.  
<https://scholarworks.wmich.edu/pure/295>

This Document is brought to you for free and open access via ScholarWorks at WMU. It has been accepted for inclusion in Legacy Scout Tickets from Pure Oil Company by an authorized administrator of ScholarWorks at WMU. See the National Digital Catalogue - Science Base Catalogue for more collections submitted by MGRRE.



---

MGRRE\_PureOilScoutTickets\_GOODROE, GLENA (COMM)\_1\_21011102800000

API 21011102800000

Permit Number 10280

Lease Name GOODROE, GLENA (COMM)

Well Number 1

County Arenac

Township 19N

Range 4E

Section 18

2021 DEQ or Pure co\_name ARENAC OIL AND GAS CO

Pure Number 316

Latitude 44.04411

Longitude -84.03255

# THE PURE OIL COMPANY LOCATION REPORT

A.F.E. No. \_\_\_\_\_

Date August 11, 1943

Division Mich. Producing

District \_\_\_\_\_

Lease \_\_\_\_\_

Glenn Goodroe (Comm.)  
Glenn Goodroe (Comm.)

Acres \_\_\_\_\_ Lease No. \_\_\_\_\_

Elevation \_\_\_\_\_

Well No. 1

(Serial No. 316)

Quadrangle C SE

Sec. 18

Twp. 19 N

Rge. 4 E

~~Dist. 2000~~  
Twp. Deep River

Deep River

Survey Arenac Oil & Gas Co  
Arenac Oil & Gas Company

County Arenac

State Michigan

Map Deep River Twp. - Arenac Co

Operator \_\_\_\_\_  
1320 1320 Feet from North Line of Lease

1320 1320 " " East " " "

" " South " " "

" " West " " "

1320 1320 Feet from North Line of Section 1/4

1320 1320 " " East " " "

" " South " " "

" " West " " "

*Room*

### LEGEND

○ Location

☀ Gas Well

● Oil Well

☀ Gas - Distillate Well

○ or ○ Dry Hole

● Dry Showing Oil

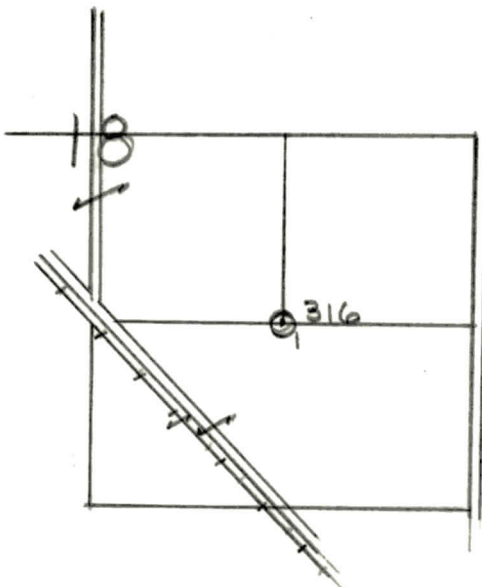
☀ Dry Showing Gas

⊗ Abandoned Location

☀ or ☀ Abandoned Gas Well

● or ● Abandoned Oil Well

⊗ or ⊗ Input Well



N

Scale \_\_\_\_\_

Remarks: \_\_\_\_\_  
\_\_\_\_\_  
\_\_\_\_\_

Submitted by RAN

Civil Engineer

Approved by \_\_\_\_\_

Division Manager

Approved by \_\_\_\_\_

Vice-President - General Manager



The Pure Oil Company  
COMPLETION RECORD OF WELLS DRILLED BY OTHER OPERATORS

Michigan Producing Division

Date September 1, 1943 No. 316  
 State Mich. County Arenac District Deep River Sec. 18 Twp. 19 N Rge. 4 E  
 (Serial No.)  
 Well No. 1 (County No.) 316 Farm Glenn Goodroe (Comm.) Acres \_\_\_\_\_  
 Operator Arenac Oil & Gas Company Information secured from Scouting Department By \_\_\_\_\_  
 Date well started 8-10-43 Date well completed 8-28-43 Elevation 754.1

PRODUCTION RECORD

Dry Hole

1st 24 hours natural \_\_\_\_\_  
 2nd 24 hours natural \_\_\_\_\_  
 Date of shot \_\_\_\_\_ No. of quarts \_\_\_\_\_ From \_\_\_\_\_ to \_\_\_\_\_ From \_\_\_\_\_ to \_\_\_\_\_  
 Date of acid \_\_\_\_\_ No. of gallons \_\_\_\_\_  
 shot \_\_\_\_\_  
 1st 24 hours after acid \_\_\_\_\_  
 shot \_\_\_\_\_  
 2nd 24 hours after acid \_\_\_\_\_

FORMATION AND CASING RECORD

Formation	Top	Bottom	Top Pay	Bottom Pay	Remarks	Casing	
						Size	Set at
Marshall	225	350			Water 172 to 180.	8"	148
Coldw. Red Rock	1316	1320				6-5/8"	465
Sunbury	1427					5-3/16"	1456
Berea	1454				Show gas 1500.		
					Water 1520-1524 -		
					500 ft. in 20 min.		
Total Depth		1524					

Remarks \_\_\_\_\_

Signed D. C. Shackelford