



Western Michigan University
ScholarWorks at WMU

Legacy Color Lithology Strip Logs

5-16-2022

MGRRE_LithStripLog_TERPENNING OTIS W & LOUISE 1_21057167710000

MGRRE Western Michigan University

Follow this and additional works at: <https://scholarworks.wmich.edu/lith>



Part of the Geology Commons

WMU ScholarWorks Citation

Western Michigan University, MGRRE, "MGRRE_LithStripLog_TERPENNING OTIS W & LOUISE 1_21057167710000" (2022). *Legacy Color Lithology Strip Logs*. 298.

<https://scholarworks.wmich.edu/lith/298>

This Document is brought to you for free and open access by ScholarWorks at WMU. It has been accepted for inclusion in Legacy Color Lithology Strip Logs by an authorized administrator of ScholarWorks at WMU. For more information, please contact wmu-scholarworks@wmich.edu.



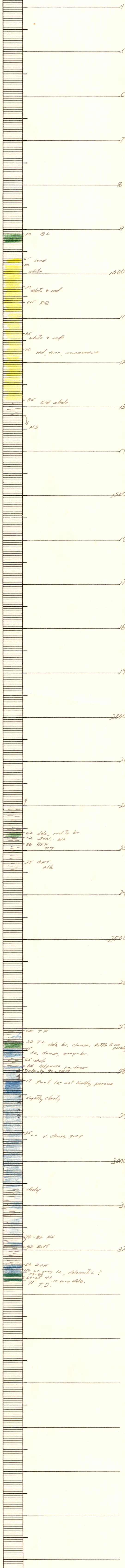
STATE Michigan		COMPANY Michigan Oil Co	
COUNTY Gratiot	FARM Terpenning	WELL NO. 1	
BLOCK Arcada	SURVEY NWNW NE 19-11N-3W		
SEC. 19			
T. 11N	R. 3W	TOTAL DEPTH 3271	
		CONTRACTOR Mercer Oil	
		COMMENCED 4-20-51	
		COMPLETED 5-12-51	
ALTIMITUDE 753		REMARKS Rotary to 1321	
PRODUCTION DA			

CASING RECORD

	10"	363
	8 1/4"	
20"	6 3/4"	1321
15 1/2"	5 1/2"	R 3220
12 1/2"		

SHOT QUARTS BETWEEN

FORM 394 - For sale by Ross-Martin Co., Tulsa



Brks 910
ST 980
SUN 2272
Ber 2286
TL 2738
HP 2786
Bull 3180

DUN 3231
SSO 3235
SW 2830-35
W 2260-65
600' hr. W 3265-75

10 SL
65 sand.
80 white
30 white & red
65 RR
35 white & red
70 red, fine, micaceous
80 CW shale.
NS

62 dol. red to br.
72 SUN. blk
86 BER

75 ANT. blk

85 TF
82 TL dol. br. dense. with 70% porosity
84 dense, gray-br.
85 shale
86 19/32 poro. dense
87-91-2517

87 Roof ls. not highly porous
slightly cherty

85 v. dense, gray

70-82 NS
92 Bull

92 DUN
96 lt. gray ls., doleritic?
98-99 NS
71 T.D.