



Western Michigan University
ScholarWorks at WMU

Legacy Scout Tickets from Pure Oil Company

8-20-2021

**MGRRE_PureOilScoutTickets_COLLINS, DEWEY ET
AL_3_21011104970000**

MGRRE
Western Michigan University

Follow this and additional works at: <https://scholarworks.wmich.edu/pure>



Part of the Geology Commons

WMU ScholarWorks Citation

MGRRE, "MGRRE_PureOilScoutTickets_COLLINS, DEWEY ET AL_3_21011104970000" (2021). *Legacy Scout Tickets from Pure Oil Company*. 308.
<https://scholarworks.wmich.edu/pure/308>

This Document is brought to you for free and open access via ScholarWorks at WMU. It has been accepted for inclusion in Legacy Scout Tickets from Pure Oil Company by an authorized administrator of ScholarWorks at WMU. See the National Digital Catalogue - Science Base Catalogue for more collections submitted by MGRRE.



MGRRE_PureOilScoutTickets_COLLINS, DEWEY ET AL_3_21011104970000

API 21011104970000

Permit Number 10497

Lease Name COLLINS, DEWEY ET AL

Well Number 3

County Arenac

Township 19N

Range 3E

Section 15

2021 DEQ or Pure co_name SAPPINGTON JOHN M WALTER B DIANNE M

Pure Number 329

Latitude 44.0429764

Longitude -84.087462

WELL REPORT - OUTSIDE OPERATIONS

SERIAL NO. 329

STATE Michigan ~~CO.~~ Arenac
 OPERATOR Ervin Major-2-19-51
Roosevelt Oil Co. Gordon Oil Co. 6-28-48
 FARM Dewey Collins, et al WELL NO. 3
 TWP. Adams S. 15 T. 19N R. 3E
~~SURVEY~~
 LOC. NE SE SE

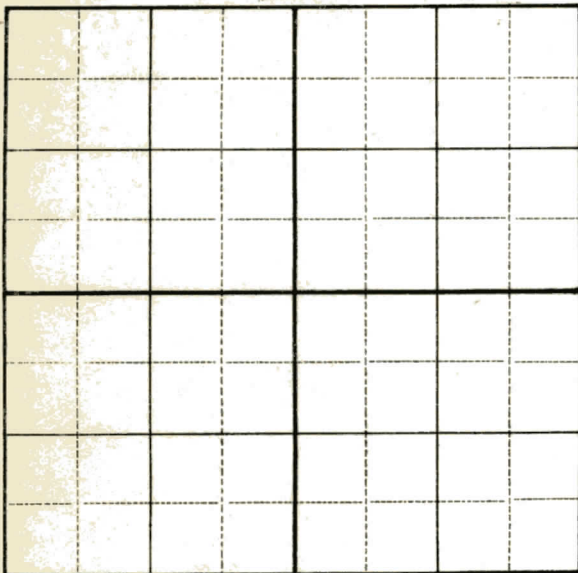
WILDCAT ☐ FIELD ☐ FIELD NAME _____

MAP NO. _____ CO-ORD. _____ ELEV. _____

STATUS _____

Operator's name changed from:
 C. W. Teater

NORTH

DATE 12-29-47 SCOUT H. J. G.

THE PURE OIL COMPANY

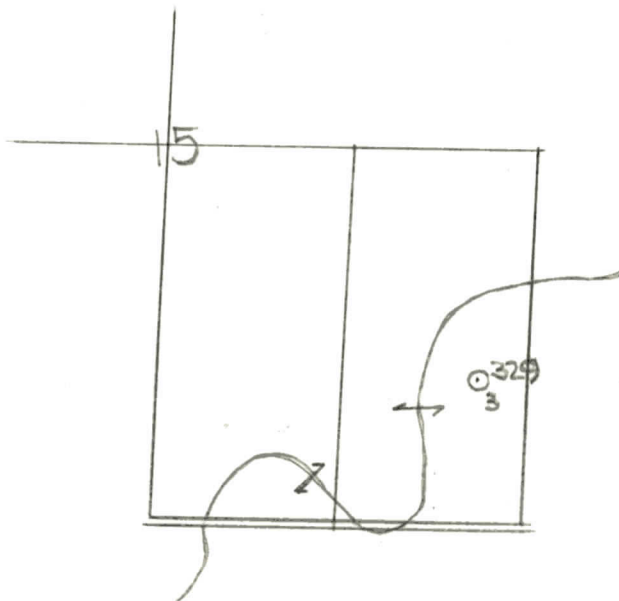
LOCATION REPORT

Date November 10, 1943 A.F.E. No. Dewey Collins - et al
 Division Mich. Producing District _____ Lease Dewey Collins, et al
 Acres _____ Lease No. _____ Elevation _____ Well No. 33 (Serial No. 329)
 Quadrangle NE SE SE Sec. 15 Twp. 19 N Rge. 3 E ~~Dist~~ Adams
 Survey _____ County Arenac State Michigan
 Operator Charles W. Teater Map Adams Township, Arenac County

330 330 Feet from North Line of Lease
990 990 " " East " " "
 " " South " " "
 " " West " " "
330 330 Feet from North Line of Section
990 990 " " East " 1/4 "
 " " South " " "
 " " West " " "

LEGEND

- Location
- ☀ Gas Well
- Oil Well
- ☀ Gas - Distillate Well
- ⊙ or ○ Dry Hole
- Dry Showing Oil
- ☀ Dry Showing Gas
- ⊙ Abandoned Location
- ☀ or ☀ Abandoned Gas Well
- or ● Abandoned Oil Well
- or ○ Input Well



N



Scale _____

Remarks: _____

Submitted by RN Civil Engineer Approved by _____ Division Manager

Approved by _____ Vice-President - General Manager

Michigan Producing Division

No. 329

Well No. 3 (county) 329 Farm Dewey Collins, et al Acres

Date well started **11-14-43** Date well completed **12-15-43** Elevation **770.2**

1st 24 hours natural Est. potential - 4008 Bbls. - 167 Bbls. per hour test.

[illegible]

1st 24 hours after acid ~~3000~~ Est. potential - 4728 Bbls. - 197 Bbls. per hour on test.

2nd 24 hours after acid shot

Formation	Top	Bottom	Top Pay	Bottom Pay	Remarks	Casing	
						Size	Set at
Goldw. Red Rock	1481	1486	Log			10"	175
Sunbury	1570	Log				7"	2863
Antrim	1740	"					
Traverse Lime	2097	SLM			Flo. S.W. 2388' SLM.		
					" " " 2503' "		
Dundee	2863		2868	2879			
Total Depth		2879					
(PB to Shut off O.H.W.							
Plugged Back T.D.		2868					
Produced 54 oil & 5 S.W.							

Remarks 2656' DSM equals 2659' SLM.

Signed **D. C. Shackelford**